

# ZDWE/ZDWF 200W 尺寸图与性能表

## ZDWE/ZDWF 200W DIMENSIONAL DRAWING & PERFORMANCE TABLE

### 性能表 Performance Table (输入转速为3,000rpm时 When Input Speed Is 3000rpm)

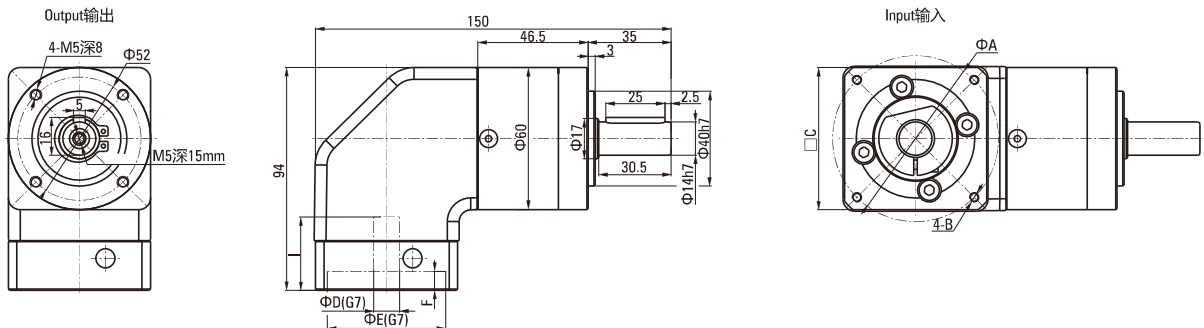
额定输入 马达功率 Rated Input Motor	减速比 Reduction Ratio	型号 Model				输出轴 转速 Outout Shaft Speed (rpm)	额定输出 扭矩 Standard Output Torque (N.m)	瞬间最大 输出扭矩 Instantaneous Max.Output Torque (N.m)	容许径向 负荷 Permissible Radial Load (N)	容许轴向 负荷 Permissible Axial Load (N)	输入轴换算 内部惯性力矩 Of Input Shaftconversion Internal Moment Ofinertia (x10 <sup>-4</sup> kg.m <sup>2</sup> )	容许输出 扭矩 Permissible Output Torque (N.m)	瞬间最大容 许输出扭矩 Instantaneous max. Permissible Output Toque (N.m)
		机座号 Type No.	系列号 Model	减速比 Reduction Ratio	马达功率 Motor								
200W	1/3	60	ZDW□	3	-200	1000	1.85	5.55	450	225	0.246	12	24
	1/4	60	ZDW□	4	-200	750	2.46	7.38	450	225	0.204	16	32
	1/5	60	ZDW□	5	-200	600	3.08	9.24	450	225	0.189	16	32
	1/8	60	ZDW□	8	-200	375	4.92	14.76	450	225	0.176	15	30
	1/10	60	ZDW□	10	-200	300	6.15	18.45	450	225	0.152	12	24
	1/9	60	ZDW□	9	-200	333.3	5.42	16.27	450	225	0.242	40	80
	1/12	60	ZDW□	12	-200	250	7.23	21.69	450	225	0.238	40	80
	1/15	60	ZDW□	15	-200	200	9.03	27.10	450	225	0.188	40	80
	1/16	60	ZDW□	16	-200	187.5	9.64	28.91	450	225	0.199	44	88
	1/20	60	ZDW□	20	-200	150	12.04	36.13	450	225	0.186	44	88
	1/25	60	ZDW□	25	-200	120	15.05	45.15	450	225	0.186	40	80
	1/32	60	ZDW□	32	-200	93.75	19.26	57.78	450	225	0.175	44	88
	1/40	60	ZDW□	40	-200	75	24.07	72.22	450	225	0.175	40	80
	1/64	120	ZDW□	64	-200	46.875	38.51	115.54	2100	1050	2.84	120	240
	1/60	80	ZDW□	60	-200	50	34.57	103.71	900	450	0.929	100	200
	1/80	80	ZDW□	80	-200	37.5	46.09	138.27	900	450	0.919	120	240
	1/100	80	ZDW□	100	-200	30	57.61	172.83	900	450	0.859	120	240
	1/120	80	ZDW□	120	-200	25	69.13	207.39	900	450	0.809	110	220
	1/160	120	ZDW□	160	-200	18.75	92.17	276.51	2100	1050	2.84	260	520
	1/200	120	ZDW□	200	-200	15	115.21	345.63	2100	1050	2.84	230	460
1/256	120	ZDW□	256	-200	11.72	147.47	442.40	2100	1050	2.84	260	520	

- 注1) 安装基准系列(马达适用表记载系列)以外的马达时，每次都是与我们联系。(法兰尺寸可能不同)
- 注2) 输入轴换算惯性力矩仅为减速机的数值，不包括马达的惯性力矩。
- 注3) 最高输入转速为5000rpm。正常情况下请转速控制在3000rpm以下。
- 注4) 容许径向负荷表示输出轴中央部位的值。
- 注5) 马达的安装顺序请参照P.158。
- 注6) 输出轴旋转方向与马达输入旋转方向相同。

- Note1) In case of attachment to a motor beyond the standard models(motor matching series), contact us. (How to measure dimensions of the flange may be changed in some cases.)
- Note2) The moment of inertia of input shaft conversion is only gained from the reducer, so it does not include moment of inertia of the motor.
- Note3) The max. input speed is 5000rpm, and usually set to 3000rpm or less.
- Note4) The permissible radial load is indicated on the center of the output shaft.
- Note5) For motor assembly procedure, see 158 page.
- Note6) Rotation of the output shaft is in the same direction as motor.

### ZDWE尺寸图 Dimensional Drawing

● 60ZDWE3-4-5-8-10-200



● 法兰部位详细尺寸表 Detailed Flange Dimensions Table (单位Unit:mm)

马达种类 Motor Type	A	B	C	D	E	F	I
T1	70	M4深(depth)10	60	11	50	4	30
T2	70	M5深(depth)12	60	14	50	4	30
T3	70	M5深(depth)12	60	14	50	4	30

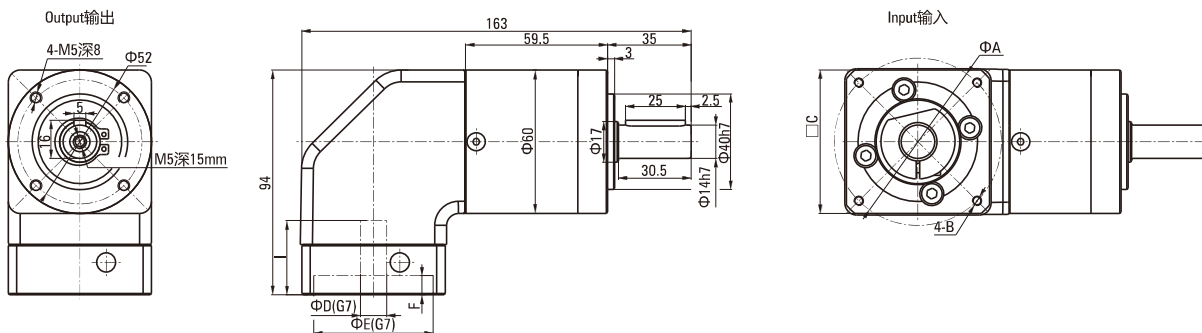
• T1~3的详细情况请参照P.156  
For details of T1~3, see 156 page

# ZDWE/ZDWF 200W 尺寸图与性能表

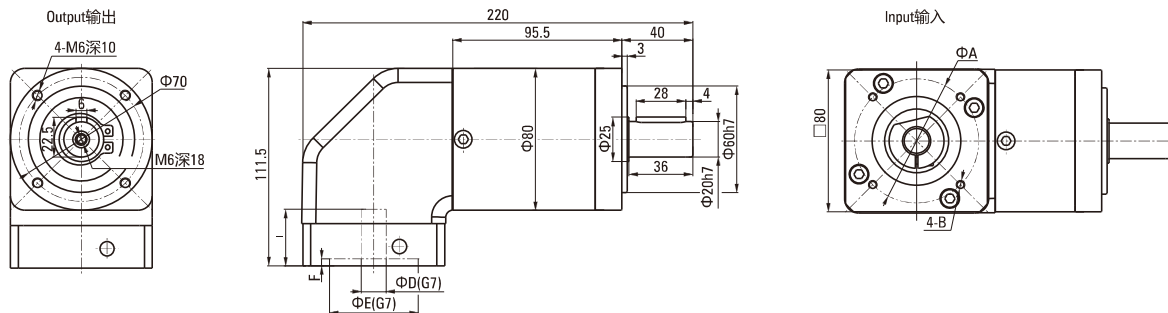
## ZDWE/ZDWF 200W DIMENSIONAL DRAWING & PERFORMANCE TABLE

### ZDWE尺寸图 Dimensional Drawing

● 60ZDWE9-12-15-16-20-25-32-40-200



● 80ZDWE60-80-100-120-200



● 法兰部位详细尺寸表 Detailed Flange Dimensions Table (单位Unit:mm)

马达种类 Motor Type	A	B	C	D	E	F	I
T1	70	M4深(depth)10	60	11	50	4	30
T2	70	M5深(depth)12	60	14	50	4	30
T3	70	M5深(depth)12	60	14	50	4	30

• T1~3的详细情况请参照P156

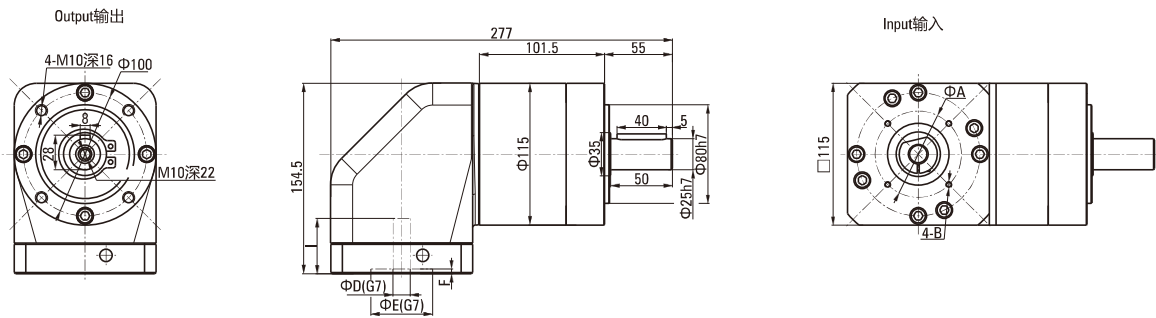
For details of T1~3, see 156 page

# ZDWE/ZDWF 200W 尺寸图与性能表

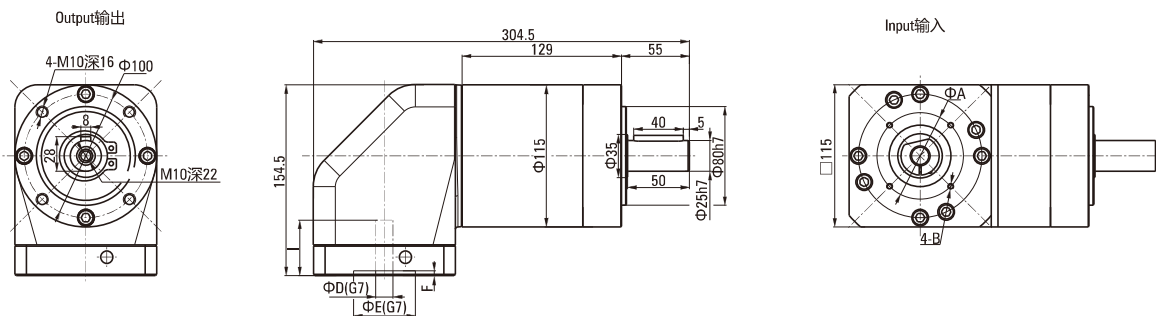
## ZDWE/ZDWF 200W DIMENSIONAL DRAWING & PERFORMANCE TABLE

### ZDWE尺寸图 Dimensional Drawing

● 120ZDWE64-200



● 120ZDWE160-200-256-200



● 法兰部位详细尺寸表 Detailed Flange Dimensions Table (单位Unit:mm)

马达种类 Motor Type	A	B	C	D	E	F	I
T1	70	M4深(depth)10	60	11	50	4	30
T2	70	M5深(depth)12	60	14	50	4	30
T3	70	M5深(depth)12	60	14	50	4	30

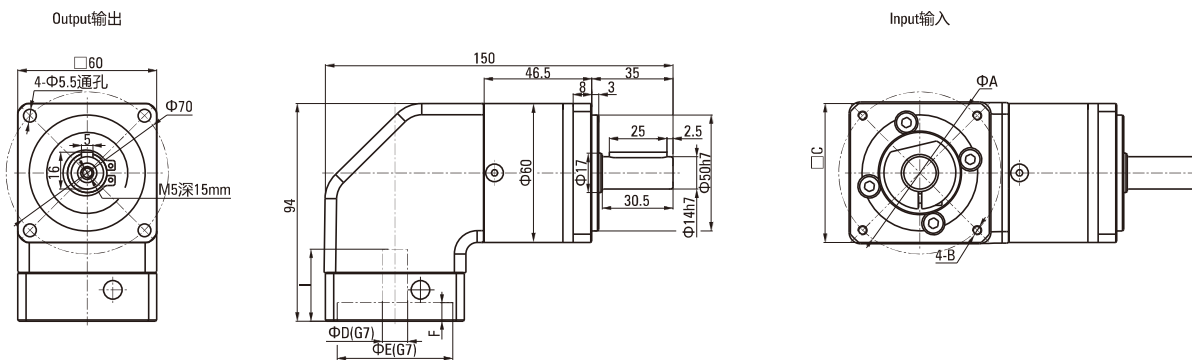
• T1~3的详细情况请参照P.156  
For details of T1~3, see 156 page

# ZDWE/ZDWF 200W 尺寸图与性能表

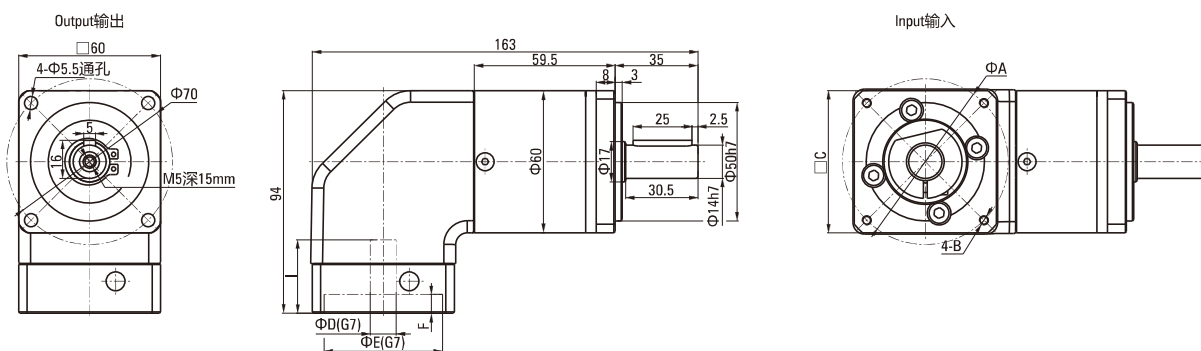
## ZDWE/ZDWF 200W DIMENSIONAL DRAWING & PERFORMANCE TABLE

### ZDWF 尺寸图 Dimensional Drawing

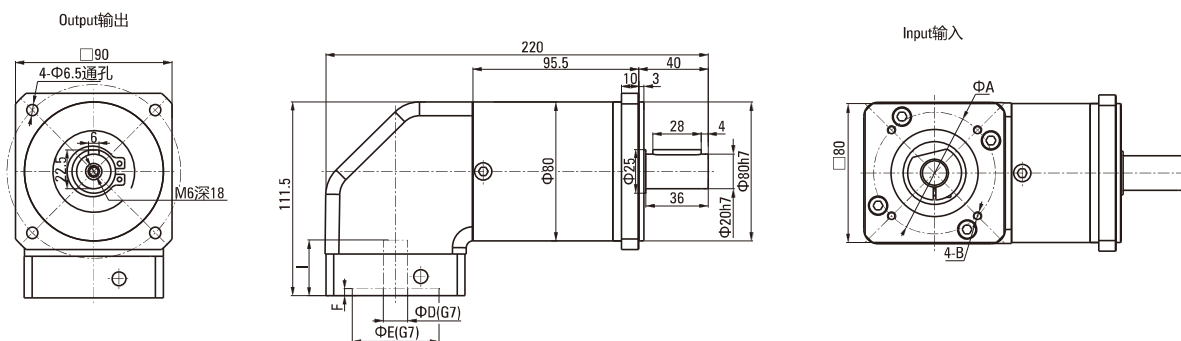
● 60ZDWF3-4-5-8-10-200



● 60ZDWF9-12-15-16-20-25-32-40-200



● 80ZDWF60-80-100-120-200



● 法兰部位详细尺寸表 Detailed Flange Dimensions Table

(单位Unit:mm)

马达种类 Motor Type	A	B	C	D	E	F	I
T1	70	M4深(depth)10	60	11	50	4	30
T2	70	M5深(depth)12	60	14	50	4	30
T3	70	M5深(depth)12	60	14	50	4	30

• T1~3的详细情况请参照P156

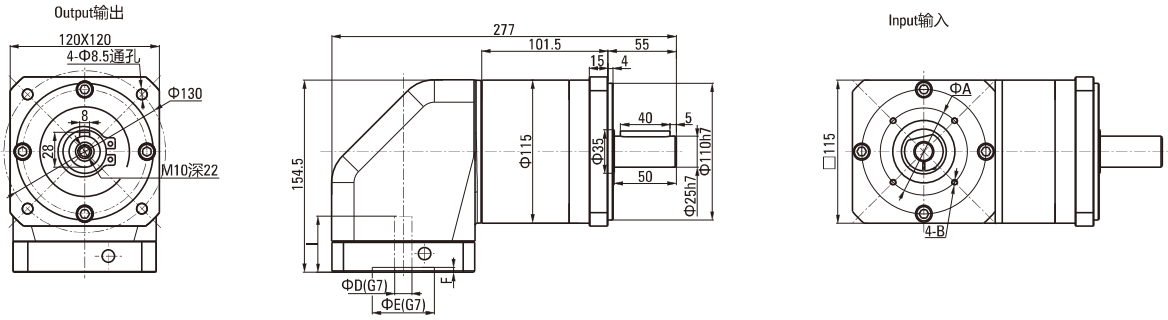
For details of T1~3, see 156 page

# ZDWE/ZDWF 200W 尺寸图与性能表

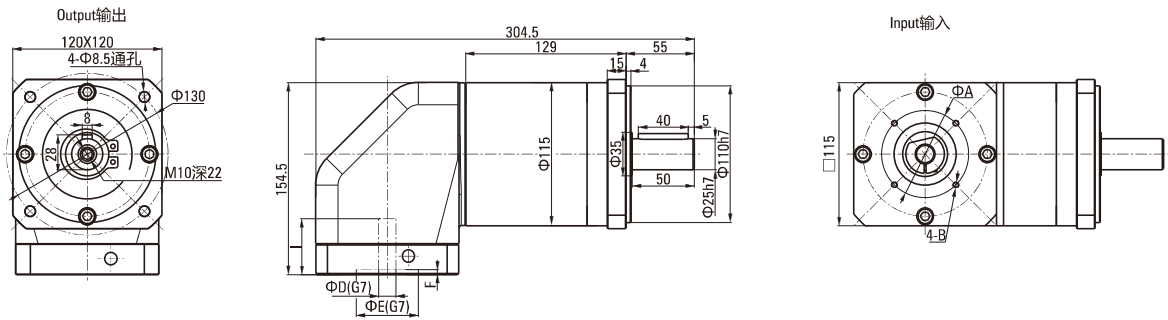
## ZDWE/ZDWF 200W DIMENSIONAL DRAWING & PERFORMANCE TABLE

### ZDWF 尺寸图 Dimensional Drawing

● 120ZDWF64-200



● 120ZDWF160-200-256-200



● 法兰部位详细尺寸表 Detailed Flange Dimensions Table (单位Unit:mm)

马达种类 Motor Type	A	B	C	D	E	F	I
T1	70	M4深(depth)10	60	11	50	4	30
T2	70	M5深(depth)12	60	14	50	4	30
T3	70	M5深(depth)12	60	14	50	4	30

• T1~3的详细情况请参照P.156  
For details of T1~3, see 156 page