

# ZD系列减速机

## ZD SERIES GEAR BOX

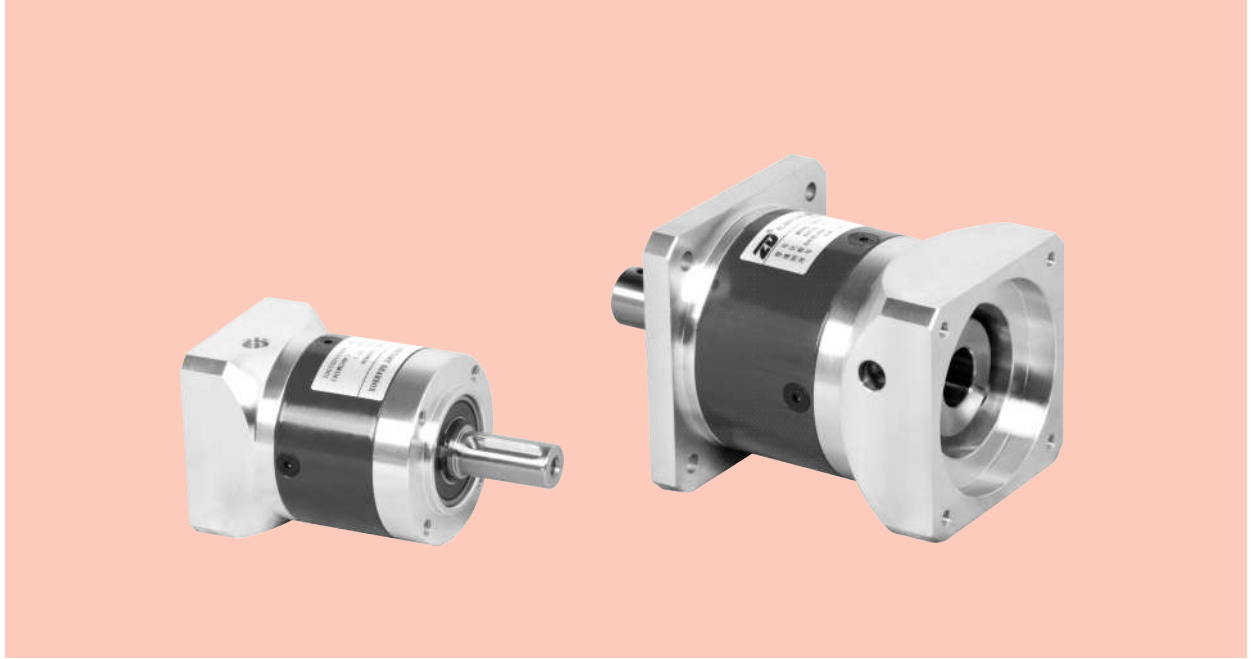
### 系列号、机型标识说明 Type And Model Number

ZD系列减速机 ZD Series Gear Head				伺服电机 Servo Motor				
80	ZDE	20	( )	(S)	-750	T1	<input type="text"/>	
①	②	③	④	⑤	⑥	⑦	⑧	
① 减速机机座号:80				Gear head frame size:80				
② 减速机系列代号:				Gear head series code:				
ZDE:圆形安装法兰系列				ZDE:Round mounting flange series				
ZDWE:直角输入圆形安装法兰系列				ZDWE:Right angle input round mounting flange series				
ZDF:方形安装法兰系列				ZDF:Square mounting flange series				
ZDWF:直角输入方形安装法兰系列				ZDWF:Right angle input square mounting flange series				
ZDS:高刚性系列				ZDS:High stiffness series				
③ 减速比:				Gear Ratio:				
单级3,4,5,8,10;				Single Stage 3,4,5,8,10;				
两级9,12,15,16,20,25,32,40,64;				Two Stage 9,12,15,16,20,25,32,40,64;				
三级60,80,100,120,160,200,256,320,516;				Three Stage 60,80,100,120,160,200,256,320,516;				
④ 精度 Amount of backlash 输出轴负荷量为容许输出扭矩的±5%时的值 precision (the load of output shaft is ±5% of allowable output torque)				机座号 Reducer Type No.	极数 Stage	标准型P2(省略) Standard Type	精密型P1 Low-backlash Type	高精型P0 High Precision Type
				40ZDE/F	1	12分arc-min	10分arc-min	5分arc-min
					2	15分arc-min	12分arc-min	8分arc-min
					3	18分arc-min	15分arc-min	12分arc-min
				60ZDE/F	1	8分arc-min	5分arc-min	3分arc-min
				80ZDE/F	2	12分arc-min	8分arc-min	5分arc-min
				120ZDE/F	3	15分arc-min	10分arc-min	8分arc-min
				160ZDE/F	3	15分arc-min	10分arc-min	8分arc-min
				70ZDS	1	8分arc-min	5分arc-min	/
				90ZDS	1	8分arc-min	5分arc-min	/
				115ZDS	1	8分arc-min	5分arc-min	/
				142ZDS	2	12分arc-min	8分arc-min	/
				190ZDS	2	12分arc-min	8分arc-min	/
				60ZDW/F	1	30分arc-min	/	/
					2	35分arc-min	/	/
					3	40分arc-min	/	/
				80ZDW/F	1	25分arc-min	/	/
					2	30分arc-min	/	/
					3	35分arc-min	/	/
				120ZDW/F	1	20分arc-min	/	/
					2	25分arc-min	/	/
					3	30分arc-min	/	/
⑤ 输出轴型式				Input shaft type				
S:整体锁紧(省略)(无论马达是否有键槽都可使用,但“D”字型不适用)				S:Over locking(Omission)(regardless whether the motor with keyway can use it,But D Cut can't use)				
S1:带锁紧环锁紧(无论马达是否有键槽都可使用,但“D”字型不适用)				S1:Locking with locking ring(regardless whether the motor with keyway can use it,But D Cut can't use)				
S2:带键槽锁紧(输入轴带键)				S2:Locking with keyway (input shaft with key)				
K:带键槽				K:With keyway				
A:其他适配器(请与本公司联系)				A:Other type (please contact with us)				
⑥ 适用伺服马达功率(W)				Applicable servo motor power (W)				
⑦ 伺服马达厂家名称(P156)				Manufacturer name of servo motor (P156)				
⑧ 伺服马达型号				Model of servo motor				

## ZDE/ZDF减速比、机座号

### ZDE/ZDF REDUCTION RATIO & TYPE NUMBER

#### 产品图 Product Graph



#### 输入转速为3000rpm时 When Input Speed Is 3000rpm

减速比Reduction Ratio	单级减速 1 Stage Reduction					两级减速 2 Stage Reduction								三级减速 3 Stage Reduction										
	1/3	1/4	1/5	1/8	1/10	1/9	1/12	1/15	1/16	1/20	1/25	1/32	1/40	1/64	1/60	1/80	1/100	1/120	1/160	1/200	1/256	1/320	1/512	
50W														60	40		60							120
100W		40							40					80	60									120
200W												60		120			80			120				
400W									60								120							
750W	60																							
1000W							60																	
1500W		80																						
2000W																								
2500W									120															
3000W																								
3500W																								
4000W		120			160							160												
4500W																								
5000W																								

#### 关于润滑油 About Lubricant

• 润滑: 润滑脂

• 更换: 不可

• Lubrication: Grease

• Replacement: Not available