

ZDE/ZDF 1000W 尺寸图与性能表

ZDE/ZDF 1000W DIMENSIONAL DRAWING & PERFORMANCE TABLE

性能表 Performance Table (输入转速为3,000rpm时 When Input Speed Is 3000rpm)

额定输入 马达功率 Rated Input Motor	减速比 Reduction Ratio	型号 Model				输出轴 转速 Shaft Speed (rpm)	额定输出 扭矩 Standard Output Torque (N.m)	瞬间最大 输出扭矩 Instantaneous Max. Output Torque (N.m)	容许径向 负荷 Permissible Radial Load (N)	容许轴向 负荷 Permissible Axial Load (N)	输入轴换算 内部惯性力矩 Internal Moment Of Inertia Of Input Shaft Conversion ($\times 10^{-4}$ kg.m ²)	容许输出 扭矩 Permissible Output Torque (N.m)	瞬间最大容 许输出扭矩 Instantaneous max. Permissible Output Torque (N.m)
		机座号 Type No.	系列号 Model	减速比 Reduction Ratio	马达功率 Motor								
1000W	1/3	80	ZD□	3	-1000	1000	9.16	27.48	900	450	0.77	40	80
	1/4	80	ZD□	4	-1000	750	12.22	36.66	900	450	0.52	50	100
	1/5	80	ZD□	5	-1000	600	15.27	45.81	900	450	0.45	50	100
	1/8	80	ZD□	8	-1000	375	24.43	73.29	900	450	0.39	45	90
	1/10	120	ZD□	10	-1000	300	30.53	91.59	2100	1050	1.14	80	160
	1/9	80	ZD□	9	-1000	333.3	26.91	80.00	900	450	0.74	100	200
	1/12	80	ZD□	12	-1000	250	35.88	107.64	900	450	0.5	100	200
	1/15	80	ZD□	15	-1000	200	44.85	134.54	900	450	0.44	100	200
	1/16	80	ZD□	16	-1000	187.5	47.84	143.51	900	450	0.5	120	240
	1/20	80	ZD□	20	-1000	150	59.79	179.38	900	450	0.44	120	240
	1/25	120	ZD□	25	-1000	120	74.74	224.22	2100	1050	1.49	230	460
	1/32	120	ZD□	32	-1000	93.75	95.66	286.99	2100	1050	1.3	260	520
	1/40	120	ZD□	40	-1000	75	119.58	358.73	2100	1050	1.3	230	460
	1/64	160	ZD□	64	-1000	46.875	191.32	573.96	6000	3000	4.5	450	900

注1) 安装基准系列(马达适用表记载系列)以外的马达时, 每次都要与我们联系。(法兰尺寸可能不同)

注2) 输入轴换算惯性力矩仅为减速机的数值, 不包括马达的惯性力矩。

注3) 最高输入转速为5000rpm。正常情况下请将转速控制在3000rpm以下。

注4) 容许径向负荷表示输出轴中央部位的值。

注5) 马达的安装顺序请参照P.158。

注6) 输出轴旋转方向与马达输入旋转方向相同。

Note1) In case of attachment to a motor beyond the standard models(motor matching series), contact us. (How to measure dimensions of the flange may be changed in some cases.)

Note2) The moment of inertia of input shaft conversion is only gained from the reducer, so it does not include moment of inertia of the motor.

Note3) The max. input speed is 5000rpm, and usually set to 3000rpm or less.

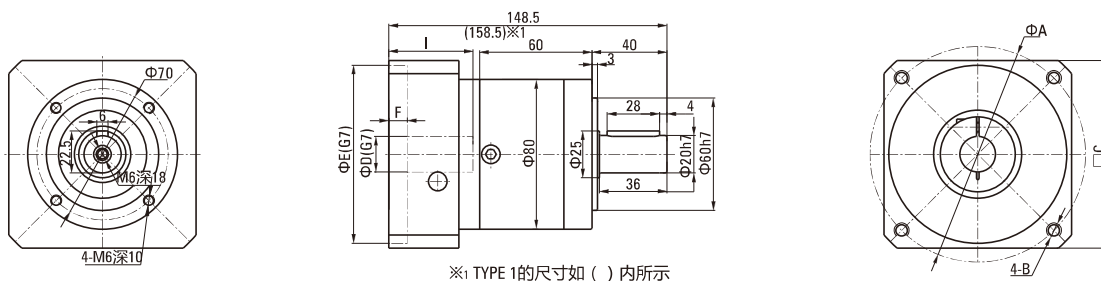
Note4) The permissible radial load is indicated on the center of the output shaft.

Note5) For motor assembly procedure, see 158 page.

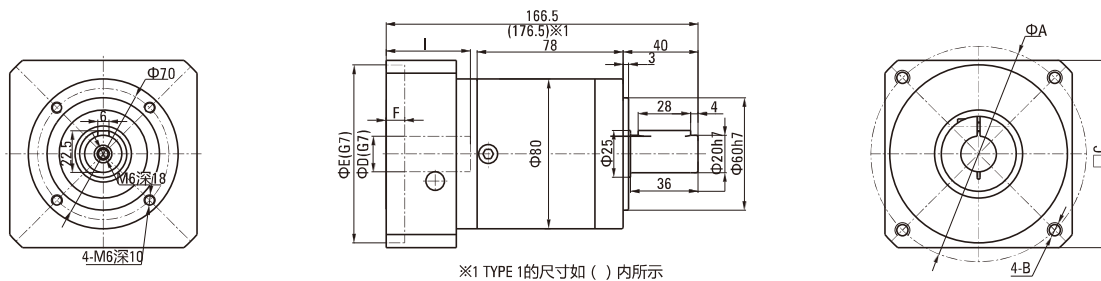
Note6) Rotation of the output shaft is in the same direction as motor.

ZDE尺寸图 Dimensional Drawing

● 80ZDE3-4-5-8-1000



● 80ZDE9-12-15-16-20-1000



● 法兰部位详细尺寸表 Detailed Flange Dimensions Table

(单位Unit:mm)

马达种类 Motor Type	A	B	C	D	E	F	I
T1	110	M6深(depth)15	86	19	80	5	55
T2	115	M6深(depth)15	100	24	95	5	45
T3	115	M6深(depth)15	100	24	95	5	45

• T1~3的详细情况请参照P.156

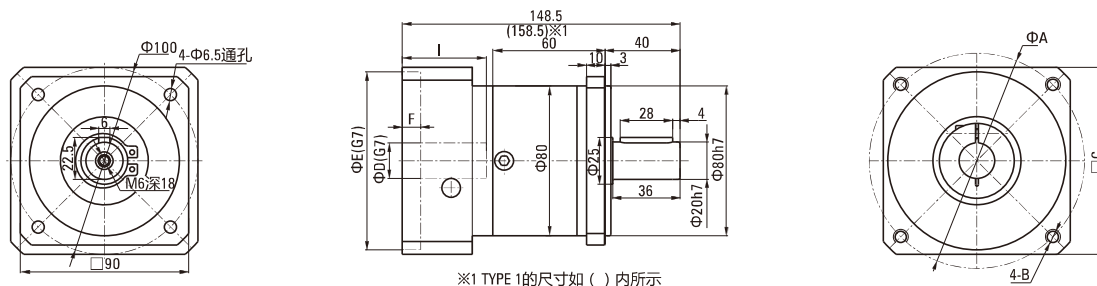
• For details of T1~3, see page 156

ZDE/ZDF 1000W 尺寸图与性能表

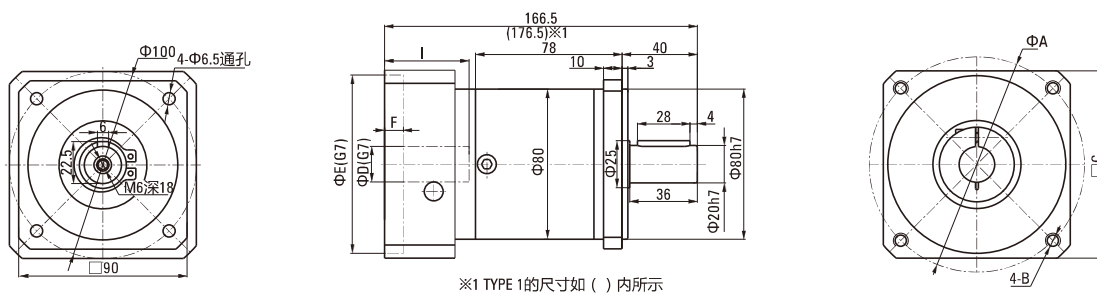
ZDE/ZDF 1000W DIMENSIONAL DRAWING & PERFORMANCE TABLE

ZDF尺寸图 Dimensional Drawing

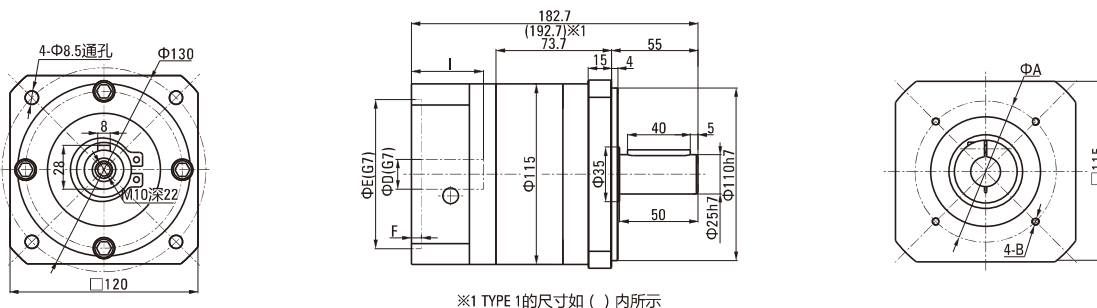
● 80ZDF3-4-5-8-1000



● 80ZDF9-12-15-16-20-1000



● 120ZDF10-1000



● 法兰部位详细尺寸表 Detailed Flange Dimensions Table

(单位Unit:mm)

马达种类 Motor Type	A	B	C	D	E	F	I
T1	100	M6深(depth)15	86	19	80	5	55
T2	115	M6深(depth)15	100	24	95	5	45
T3	115	M6深(depth)15	100	24	95	5	45

• T1~3的详细情况请参照P156

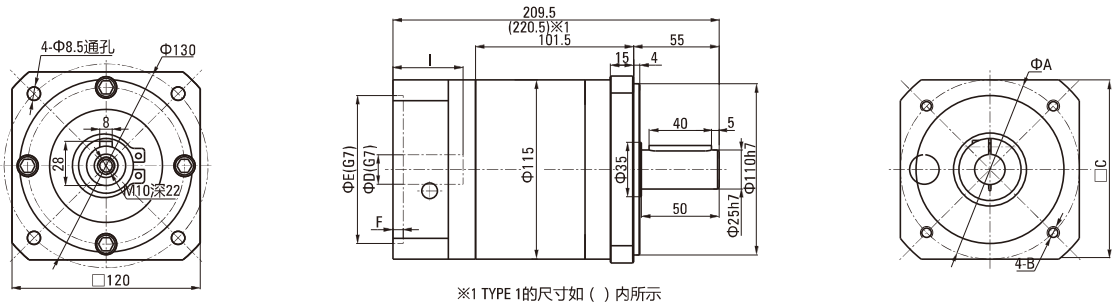
• For details of T1~3, see 156 page

ZDE/ZDF 1000W 尺寸图与性能表

ZDE/ZDF 1000W DIMENSIONAL DRAWING & PERFORMANCE TABLE

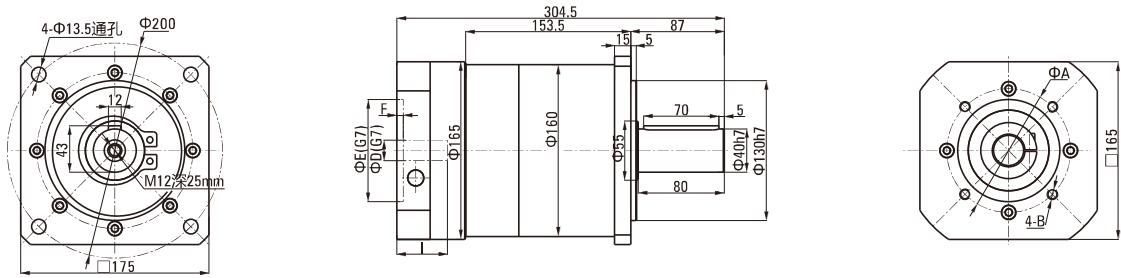
ZDF 尺寸图 Dimensional Drawing

● 120ZDF25-32-40-1000



※1 TYPE 1 的尺寸如 () 内所示

● 160ZDF64-1000



※1 TYPE 1 的尺寸如 () 内所示

● 法兰部位详细尺寸表 Detailed Flange Dimensions Table (单位Unit:mm)

马达种类 Motor Type	A	B	C	D	E	F	I
T1	100	M6深(depth)15	86	19	80	5	55
T2	115	M6深(depth)15	100	24	95	5	45
T3	115	M6深(depth)15	100	24	95	5	45

• T1~3的详细情况请参照P.156
 • For details of T1~3, see 156 page