

ZDE/ZDF 400W 尺寸图与性能表

ZDE/ZDF 400W DIMENSIONAL DRAWING & PERFORMANCE TABLE

性能表 Performance Table (输入转速为3,000rpm时 When Input Speed Is 3000rpm)

额定输入 马达功率 Rated Input Motor	减速比 Reduction Ratio	型号 Model				输出轴 转速 Outout Shaft Speed (rpm)	额定输出 扭矩 Standard Output Torque (N.m)	瞬间最大 输出扭矩 Instantaneous Max.Output Torque (N.m)	容许径向 负荷 Permissible Radial Load (N)	容许轴向 负荷 Permissible Axial Load (N)	输入轴换算 内部惯性力矩 Of Input Shaftconversion Internal Moment Ofinertia ($\times 10^{-4}$ kg.m ²)	容许输出 扭矩 Permissible Output Torque (N.m)	瞬间最大容 许输出扭矩 Instantaneous max. Permissible Output Toque (N.m)
		机座号 Type No.	系列号 Model	减速比 Reduction Ratio	马达功率 Motor								
400W	1/3	60	ZD□	3	-400	1000	3.75	11.25	450	225	0.135	12	24
	1/4	60	ZD□	4	-400	750	5.00	15.00	450	225	0.093	16	32
	1/5	60	ZD□	5	-400	600	6.25	18.75	450	225	0.078	16	32
	1/8	60	ZD□	8	-400	375	9.99	29.97	450	225	0.065	15	30
	1/10	80	ZD□	10	-400	300	12.49	37.47	900	450	0.34	40	80
	1/9	60	ZD□	9	-400	333.3	11.01	33.00	450	225	0.131	40	80
	1/12	60	ZD□	12	-400	250	14.67	44.02	450	225	0.088	40	80
	1/15	60	ZD□	15	-400	200	18.34	55.02	450	225	0.075	40	80
	1/16	60	ZD□	16	-400	187.5	19.56	58.69	450	225	0.088	44	88
	1/20	60	ZD□	20	-400	150	24.45	73.35	450	225	0.075	44	88
	1/25	80	ZD□	25	-400	120	30.56	91.68	900	450	0.44	110	220
	1/32	80	ZD□	32	-400	93.75	39.11	117.34	900	450	0.39	120	240
	1/40	80	ZD□	40	-400	75	48.89	146.67	900	450	0.39	110	220
	1/64	120	ZD□	64	-400	46.875	78.22	234.65	2100	1050	1.3	120	240
	1/60	120	ZD□	60	-400	50	70.21	210.63	2100	1050	1.49	210	420
	1/80	120	ZD□	80	-400	37.5	93.61	280.83	2100	1050	1.5	260	520
	1/100	120	ZD□	100	-400	30	117.01	351.03	2100	1050	1.49	260	520
1/120	120	ZD□	120	-400	25	140.41	421.23	2100	1050	1.3	230	460	

注1) 安装基准系列(马达适用表记载系列)以外的马达时, 每次都要与我们联系。(法兰尺寸可能不同)

注2) 输入轴换算惯性力矩仅为减速机的数值, 不包括马达的惯性力矩。

注3) 最高输入转速为5000rpm。正常情况下请将转速控制在3000rpm以下。

注4) 容许径向负荷表示输出轴中央部位的值。

注5) 马达的安装顺序请参照P158。

注6) 输出轴旋转方向与马达输入旋转方向相同。

Note1) In case of attachment to a motor beyond the standard models(motor matching series), contact us. (How to measure dimensions of the flange may be changed in some cases.)

Note2) The moment of inertia of input shaft conversion is only gained from the reducer, so it does not include moment of inertia of the motor.

Note3) The max. input speed is 5000rpm, and usually set to 3000rpm or less.

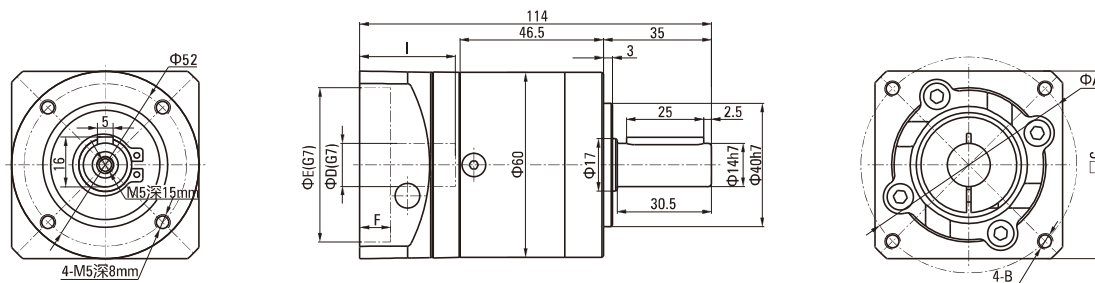
Note4) The permissible radial load is indicated on the center of the output shaft.

Note5) For motor assembly procedure, see 158 page.

Note6) Rotation of the output shaft is in the same direction as motor.

ZDE尺寸图 Dimensional Drawing

● 60ZDE3-4-5-8-400



● 法兰部位详细尺寸表 Detailed Flange Dimensions Table

(单位Unit:mm)

马达种类 Motor Type	A	B	C	D	E	F	I
T1	70	M3深(depth)10	60	14	50	4	30
T2	70	M4深(depth)12	60	14	50	4	30
T3	70	M4深(depth)12	60	14	50	4	30

• T1~3的详细情况请参照P156

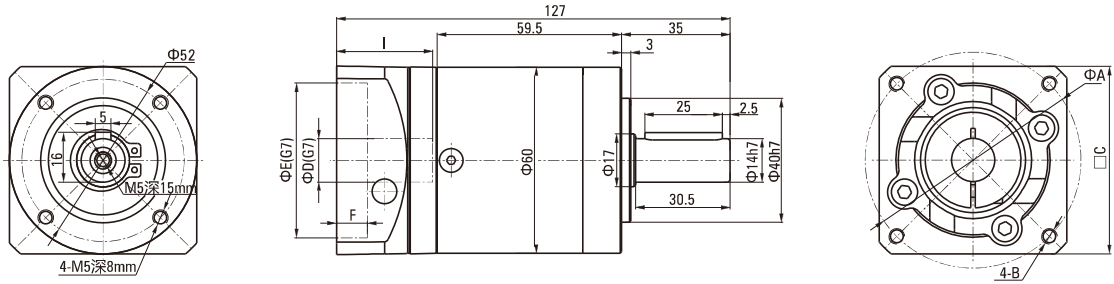
• For details of T1~3, see 156 page

ZDE/ZDF 400W 尺寸图与性能表

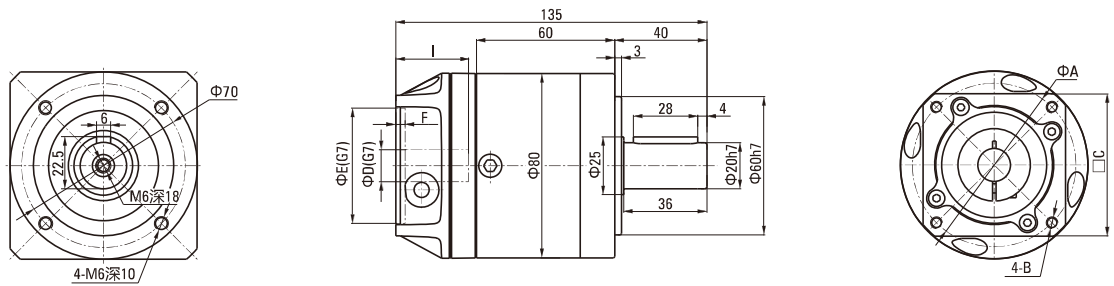
ZDE/ZDF 400W DIMENSIONAL DRAWING & PERFORMANCE TABLE

ZDE尺寸图 Dimensional Drawing

● 60ZDE9-12-15-16-20-400



● 80ZDE10-400



● 法兰部位详细尺寸表 Detailed Flange Dimensions Table (单位Unit:mm)

马达种类 Motor Type	A	B	C	D	E	F	I
T1	70	M4深(depth)10	60	14	50	4	30
T2	70	M5深(depth)12	60	14	50	4	30
T3	70	M5深(depth)12	60	14	50	4	30

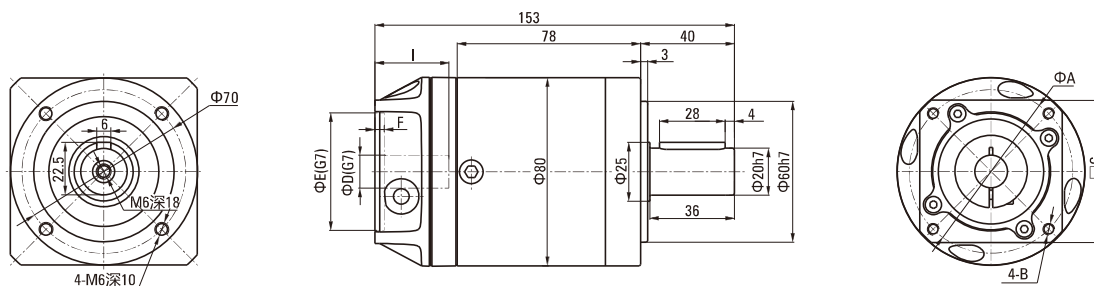
• T1~3的详细情况请参照P.156
• For details of T1~3, see 156 page

ZDE/ZDF 400W 尺寸图与性能表

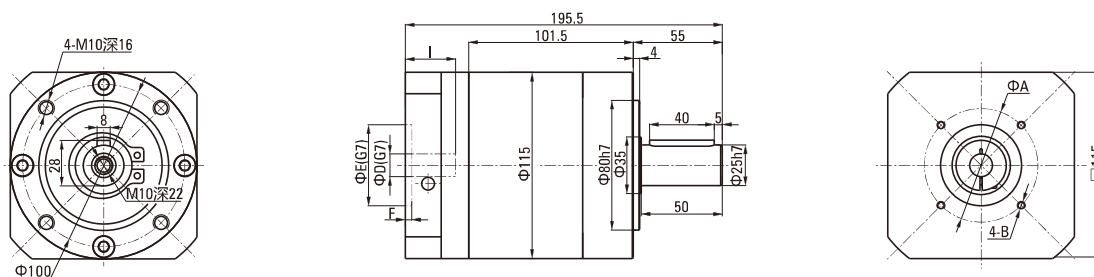
ZDE/ZDF 400W DIMENSIONAL DRAWING & PERFORMANCE TABLE

ZDF尺寸图 Dimensional Drawing

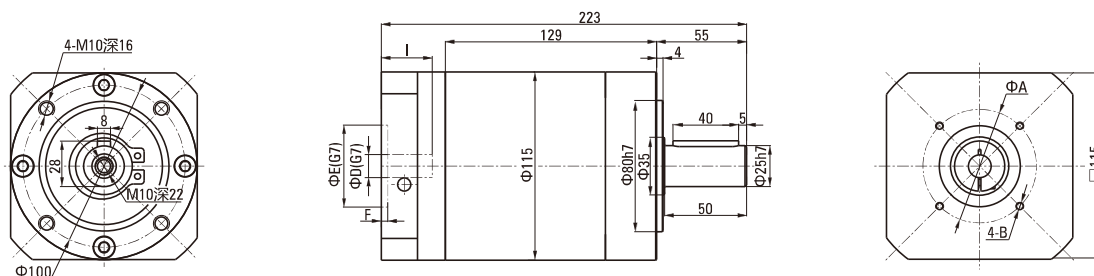
● 80ZDE25-32-40-400



● 120ZDE64-400



● 120ZDE60-80-100-120-400



● 法兰部位详细尺寸表 Detailed Flange Dimensions Table

(单位Unit:mm)

马达种类 Motor Type	A	B	C	D	E	F	I
T1	70	M4深(depth)10	60	14	50	4	30
T2	70	M5深(depth)12	60	14	50	4	30
T3	70	M5深(depth)12	60	14	50	4	30

• T1~3的详细情况请参照P156

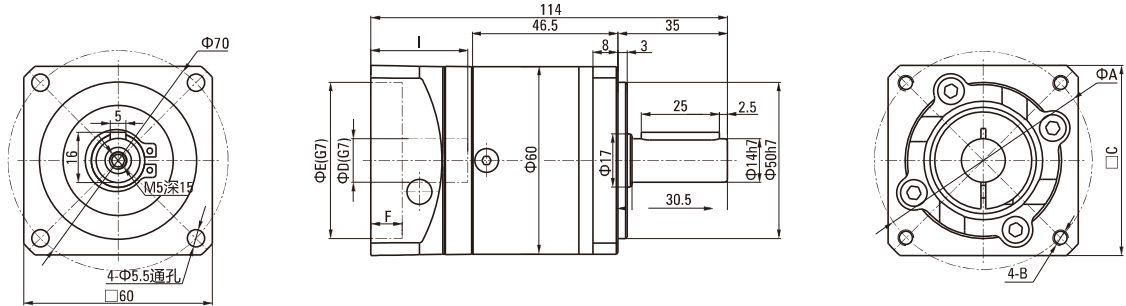
• For details of T1~3, see 156 page

ZDE/ZDF 400W 尺寸图与性能表

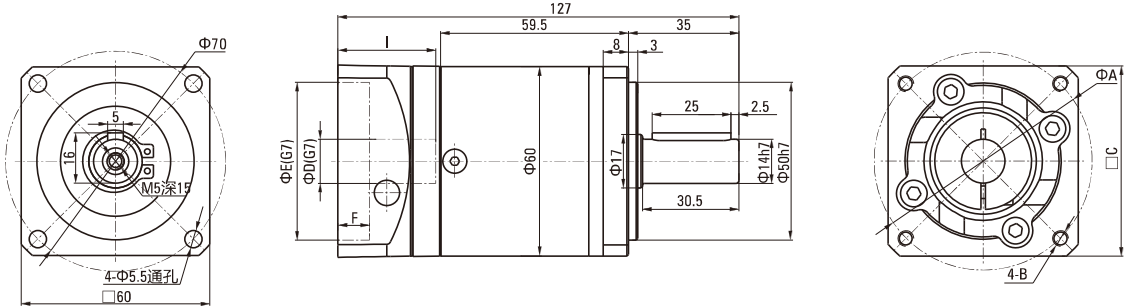
ZDE/ZDF 400W DIMENSIONAL DRAWING & PERFORMANCE TABLE

ZDF尺寸图 Dimensional Drawing

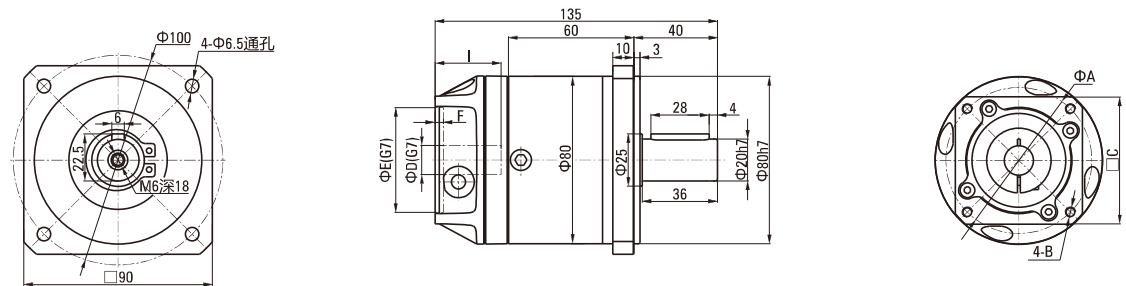
● 60ZDF3-4-5-8-400



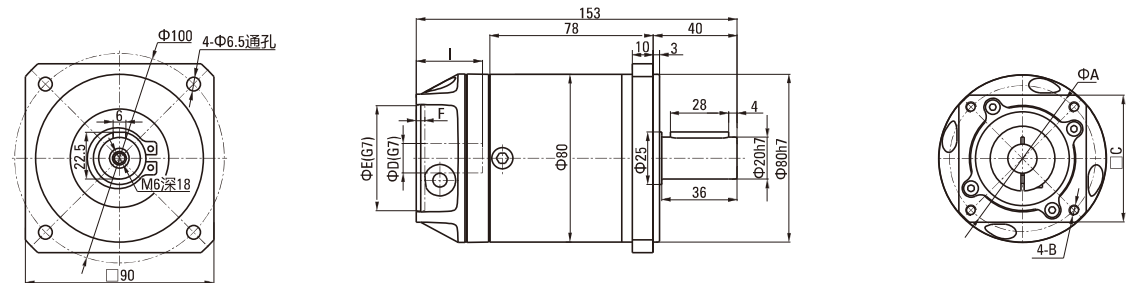
● 60ZDF9-12-15-16-20-400



● 80ZDF10-400



● 80ZDF25-32-40-400



● 法兰部位详细尺寸表 Detailed Flange Dimensions Table

(单位Unit:mm)

马达种类 Motor Type	A	B	C	D	E	F	I
T1	70	M4深(depth)10	60	14	50	4	30
T2	70	M5深(depth)12	60	14	50	4	30
T3	70	M5深(depth)12	60	14	50	4	30

• T1~3的详细情况请参照P.156

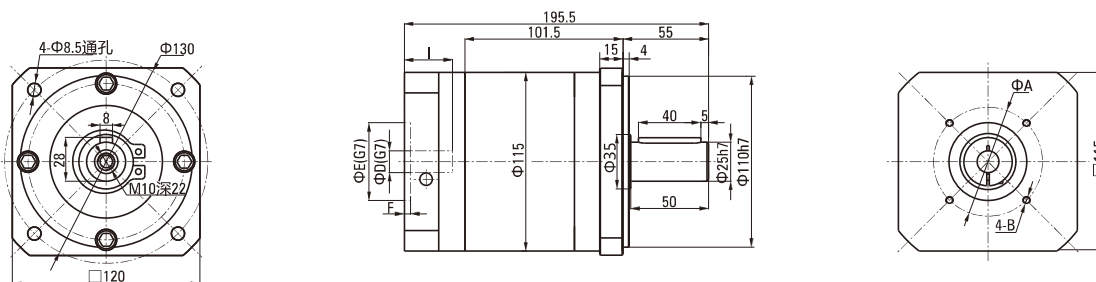
• For details of T1~3, see 156 page

ZDE/ZDF 400W 尺寸图与性能表

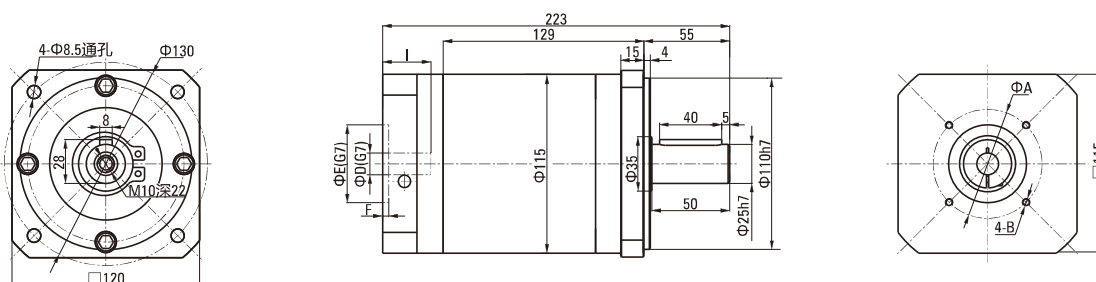
ZDE/ZDF 400W DIMENSIONAL DRAWING & PERFORMANCE TABLE

ZDF尺寸图 Dimensional Drawing

● 120ZDF64-400



● 120ZDF60-80-100-120-400



● 法兰部位详细尺寸表 Detailed Flange Dimensions Table

(单位Unit:mm)

马达种类 Motor Type	A	B	C	D	E	F	I
T1	70	M4深(depth)10	60	14	50	4	30
T2	70	M5深(depth)12	60	14	50	4	30
T3	70	M5深(depth)12	60	14	50	4	30

• T1~3的详细情况请参照P156

• For details of T1~3, see 156 page