

## ZDE/ZDF 100W 尺寸图与性能表

### ZDE/ZDF 100W DIMENSIONAL DRAWING & PERFORMANCE TABLE

#### 性能表 Performance Table (输入转速为3,000rpm时 When Input Speed Is 3000rpm)

额定输入 马达功率 Rated Input Motor	减速比 Reduction Ratio	型号 Model				输出轴 转速 Outout Shaft Speed (rpm)	额定输出 扭矩 Standard Output Torque (N.m)	瞬间最大 输出扭矩 Instantaneous Max.Output Torque (N.m)	容许径向 负荷 Permissible Radial Load (N)	容许轴向 负荷 Permissible Axial Load (N)	输入轴换算 内部惯性力矩 Internal Moment Of inertia Of Input Shaftconversion ( $\times 10^{-4}$ kg.m <sup>2</sup> )	容许输出 扭矩 Permissible Output Torque (N.m)	瞬间最大容 许输出扭矩 Instantaneous max. Permissible Output Torque (N.m)
		机座号 Type No.	系列号 Model	减速比 Reduction Ratio	马达功率 Motor								
100W	1/3	40	ZD□	3	-100	1000	0.93	2.79	160	80	0.031	4.5	9
	1/4	40	ZD□	4	-100	750	1.23	3.69	160	80	0.022	6	12
	1/5	40	ZD□	5	-100	600	1.54	4.62	160	80	0.019	6	12
	1/8	40	ZD□	8	-100	375	2.46	7.38	160	80	0.017	5	10
	1/10	60	ZD□	10	-100	300	3.08	9.24	450	225	0.054	12	24
	1/9	40	ZD□	9	-100	333.3	2.72	8.15	160	80	0.03	16.5	33
	1/12	40	ZD□	12	-100	250	3.62	10.86	160	80	0.022	16.5	33
	1/15	40	ZD□	15	-100	200	4.52	13.57	160	80	0.019	16.5	33
	1/16	40	ZD□	16	-100	187.5	4.82	14.47	160	80	0.022	20	40
	1/20	40	ZD□	20	-100	150	6.03	18.08	160	80	0.019	20	40
	1/25	40	ZD□	25	-100	120	7.53	22.59	160	80	0.019	18	36
	1/32	40	ZD□	32	-100	93.75	9.64	28.91	160	80	0.017	20	40
	1/40	40	ZD□	40	-100	75	12.04	36.00	160	80	0.064	18	36
	1/64	80	ZD□	64	-100	46.875	19.26	57.78	900	450	0.44	50	100
	1/60	60	ZD□	60	-100	50	17.29	51.87	450	225	0.075	40	80
	1/80	60	ZD□	80	-100	37.5	23.05	69.15	450	225	0.075	44	88
	1/100	80	ZD□	100	-100	30	28.81	86.43	450	225	0.075	44	88
	1/120	80	ZD□	120	-100	25	34.57	103.71	900	450	0.39	110	220
	1/160	80	ZD□	160	-100	18.75	46.09	138.27	900	450	0.39	120	240
	1/200	80	ZD□	200	-100	15	57.61	172.27	900	450	0.39	110	220
1/256	80	ZD□	256	-100	11.72	73.74	221.21	900	450	0.39	120	240	
1/320	120	ZD□	320	-100	9.375	92.17	276.51	2100	1050	1.3	230	460	

注1) 安装基准系列(马达适用表记载系列)以外的马达时, 每次都要与我们联系。(法兰尺寸可能不同)

注2) 输入轴换算惯性力矩仅为减速机的数值, 不包括马达的惯性力矩。

注3) 最高输入转速为5000rpm。正常情况下请将转速控制在3000rpm以下。

注4) 容许径向负荷表示输出轴中央部位的数值。

注5) 马达的安装顺序请参照P.158。

注6) 输出轴旋转方向与马达输入旋转方向相同。

Note1) In case of attachment to a motor beyond the standard models(motor matching series), contact us. (How to measure dimensions of the flange may be changed in some cases.)

Note2) The moment of inertia of input shaft conversion is only gained from the reducer, so it does not include moment of inertia of the motor.

Note3) The max. input speed is 5000rpm, and usually set to 3000rpm or less.

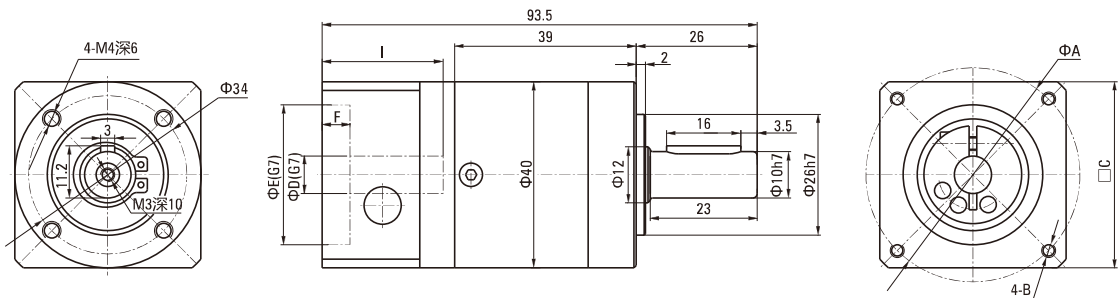
Note4) The permissible radial load is indicated on the center of the output shaft.

Note5) For motor assembly procedure, see 158 page.

Note6) Rotation of the output shaft is in the same direction as motor.

#### ZDE尺寸图 Dimensional Drawing

● 40ZDE3-4-5-8-100



● 法兰部位详细尺寸表 Detailed Flange Dimensions Table

(单位Unit:mm)

马达种类 Motor Type	A	B	C	D	E	F	I
T1	45	M3深(depth)6.5	40	8	30	4	26
T2	46	M4深(depth)6.5	40	6	30	4	26
T3	46	M4深(depth)6.5	40	8	30	4	26

• T1~3的详细情况请参照P.156

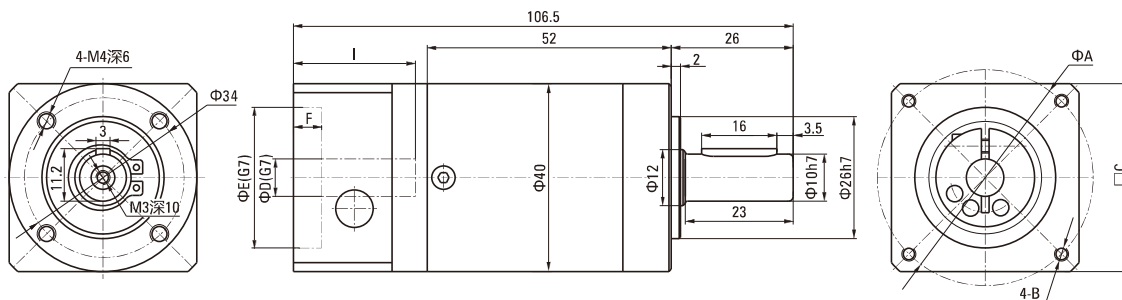
• For details of T1~3, see 156 page

# ZDE/ZDF 100W 尺寸图与性能表

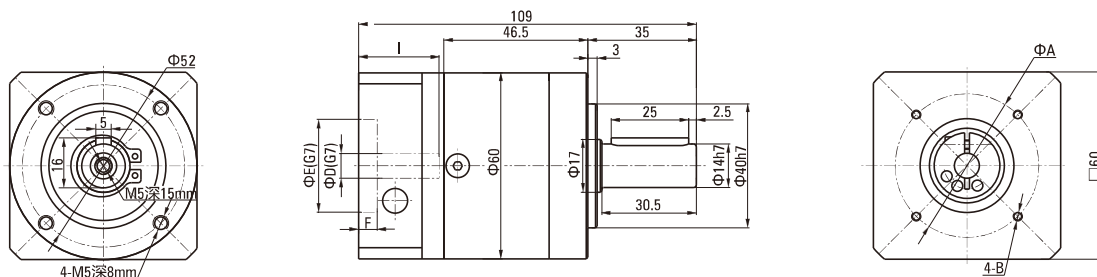
## ZDE/ZDF 100W DIMENSIONAL DRAWING & PERFORMANCE TABLE

### ZDE尺寸图 Dimensional Drawing

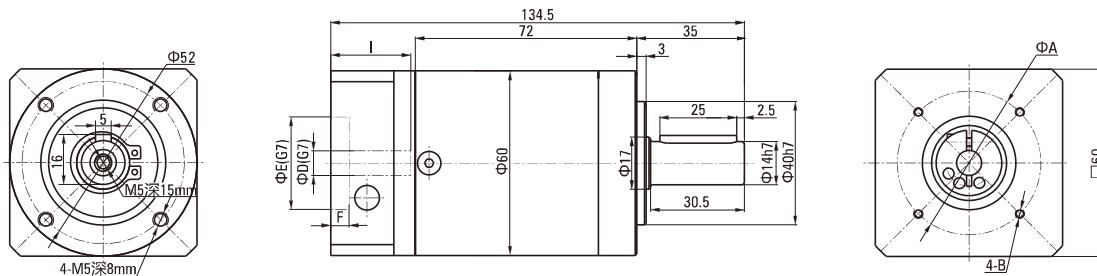
● 40ZDE9-12-15-16-20-25-32-40-100



● 60ZDE10-100



● 60ZDE60-80-100



● 法兰部位详细尺寸表 Detailed Flange Dimensions Table

(单位Unit:mm)

马达种类 Motor Type	A	B	C	D	E	F	I
T1	45	M3深(depth)10	40	8	30	4	26
T2	46	M4深(depth)10	40	8	30	4	26
T3	46	M4深(depth)10	40	8	30	4	26

• T1~3的详细情况请参照P156

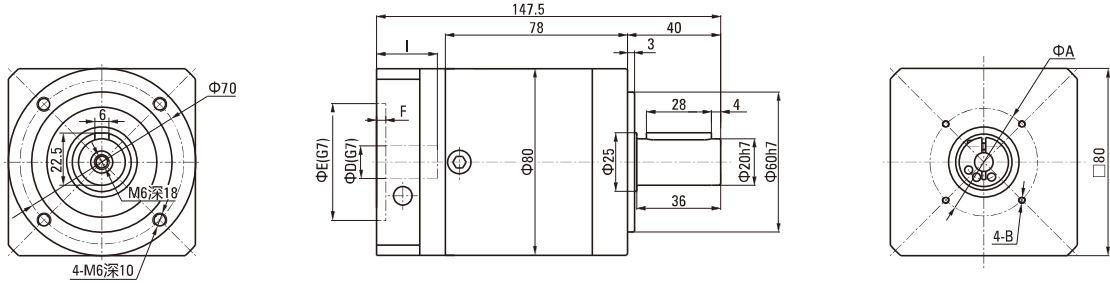
• For details of T1~3, see 156 page

# ZDE/ZDF 100W 尺寸图与性能表

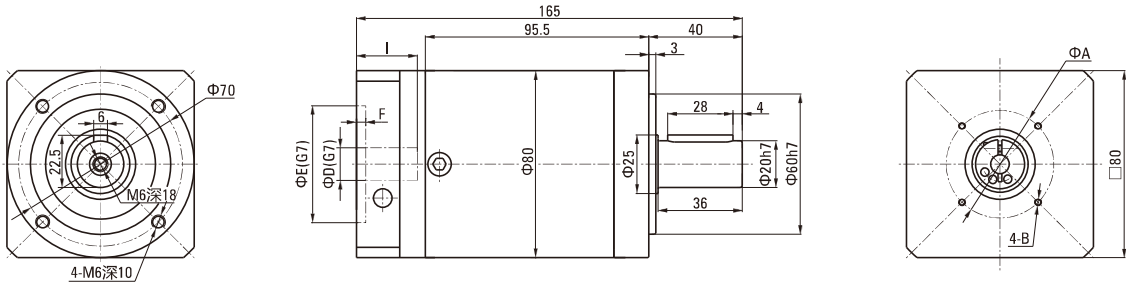
## ZDE/ZDF 100W DIMENSIONAL DRAWING & PERFORMANCE TABLE

### ZDE尺寸图 Dimensional Drawing

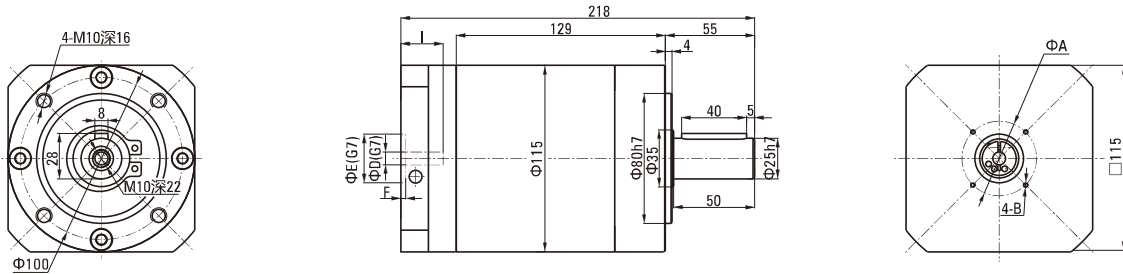
● 80ZDE64-100



● 80ZDE100-120-160-200-256-100



● 120ZDE320-100



● 法兰部位详细尺寸表 Detailed Flange Dimensions Table (单位Unit:mm)

马达种类 Motor Type	A	B	C	D	E	F	I
T1	45	M3深(depth)10	40	8	30	4	26
T2	46	M4深(depth)10	40	8	30	4	26
T3	46	M4深(depth)10	40	8	30	4	26

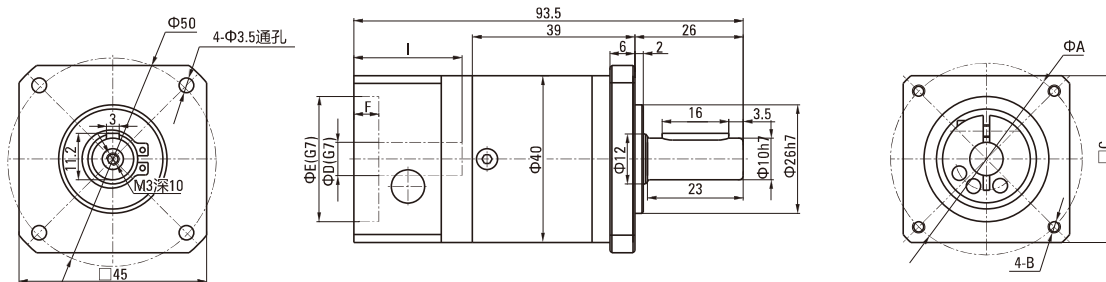
• T1~3的详细情况请参照P.156  
• For details of T1~3, see 156 page

# ZDE/ZDF 100W 尺寸图与性能表

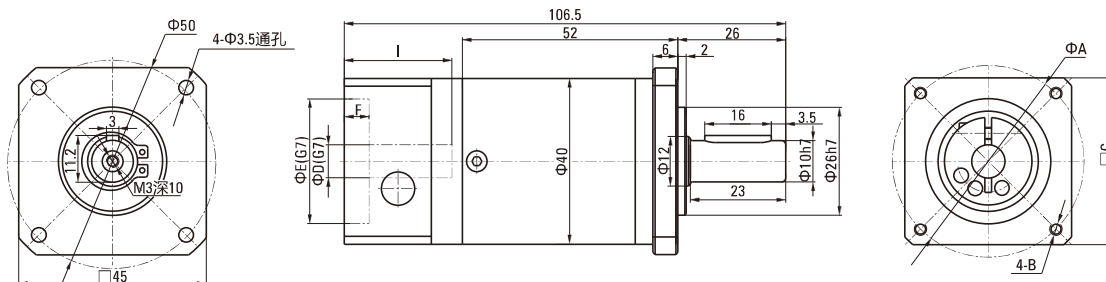
## ZDE/ZDF 100W DIMENSIONAL DRAWING & PERFORMANCE TABLE

### ZDF尺寸图 Dimensional Drawing

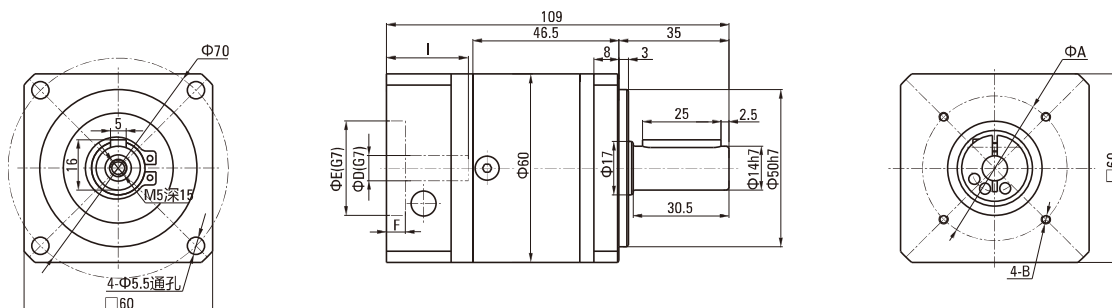
● 40ZDF3-4-5-8-100



● 40ZDF9-12-15-16-20-25-32-40-100



● 60ZDF10-100



● 法兰部位详细尺寸表 Detailed Flange Dimensions Table

(单位Unit:mm)

马达种类 Motor Type	A	B	C	D	E	F	I
T1	45	M3深(depth)10	40	8	30	4	26
T2	46	M4深(depth)10	40	8	30	4	26
T3	46	M4深(depth)10	40	8	30	4	26

• T1~3的详细情况请参照P156

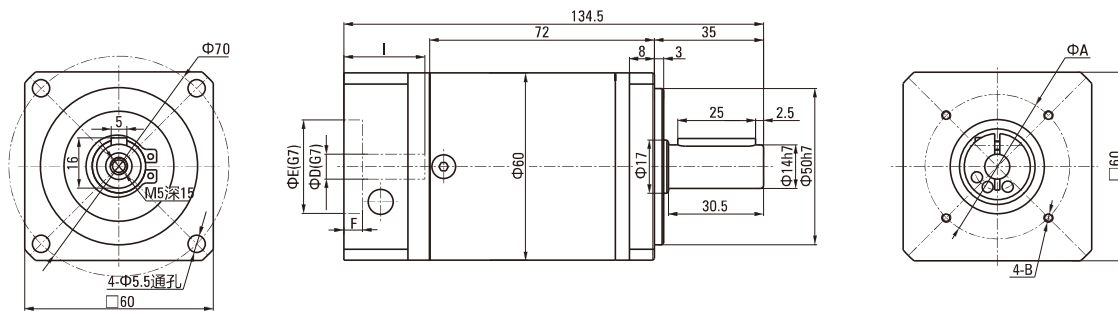
• For details of T1~3, see 156 page

# ZDE/ZDF 100W 尺寸图与性能表

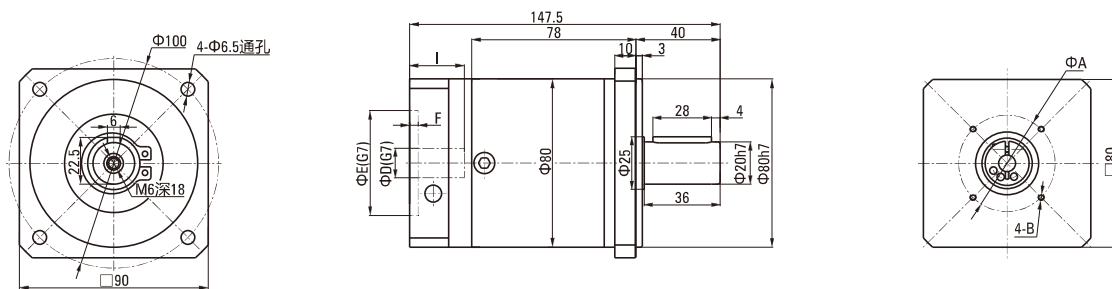
## ZDE/ZDF 100W DIMENSIONAL DRAWING & PERFORMANCE TABLE

### ZDF 尺寸图 Dimensional Drawing

● 60ZDF60-80-100



● 80ZDF64-100



● 法兰部位详细尺寸表 Detailed Flange Dimensions Table (单位Unit:mm)

马达种类 Motor Type	A	B	C	D	E	F	I
T1	45	M3深(depth)10	40	8	30	4	26
T2	46	M4深(depth)10	40	8	30	4	26
T3	46	M4深(depth)10	40	8	30	4	26

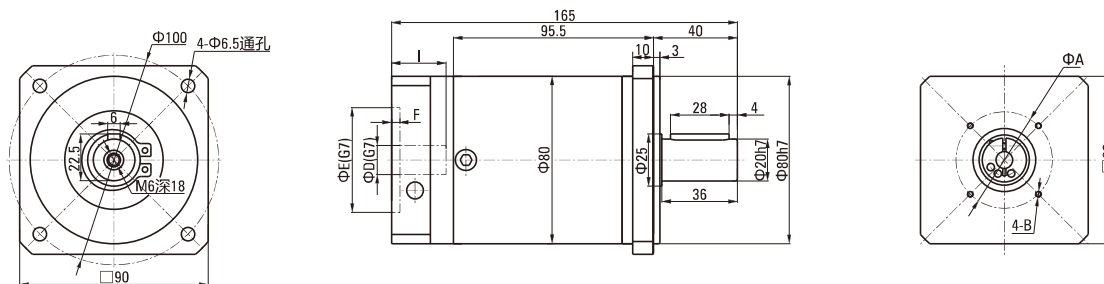
• T1~3的详细情况请参照P.156  
• For details of T1~3, see 156 page

# ZDE/ZDF 100W 尺寸图与性能表

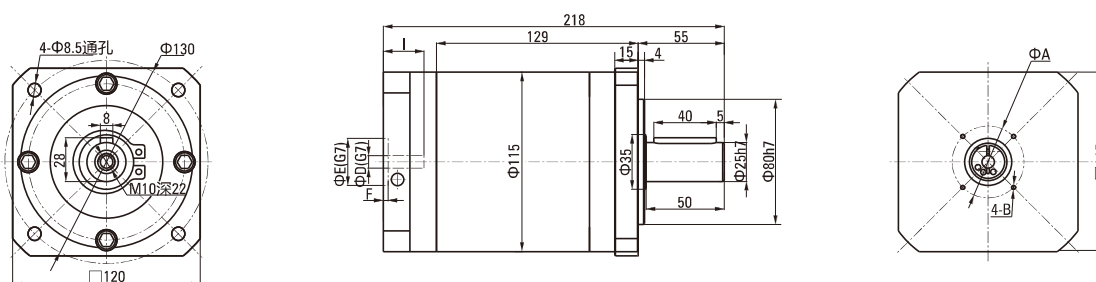
## ZDE/ZDF 100W DIMENSIONAL DRAWING & PERFORMANCE TABLE

### ZDF尺寸图 Dimensional Drawing

● 80ZDF100-120-160-200-256-100



● 120ZDF320-100



● 法兰部位详细尺寸表 Detailed Flange Dimensions Table (单位Unit:mm)

马达种类 Motor Type	A	B	C	D	E	F	I
T1	45	M3深(depth)10	40	8	30	4	26
T2	46	M4深(depth)10	40	8	30	4	26
T3	46	M4深(depth)10	40	8	30	4	26

• T1~3的详细情况请参照P156

• For details of T1~3, see 156 page