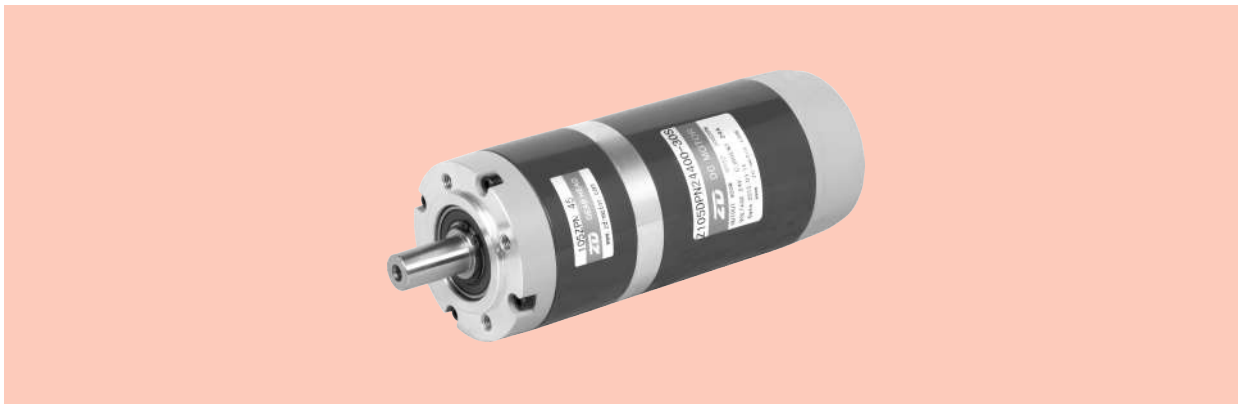
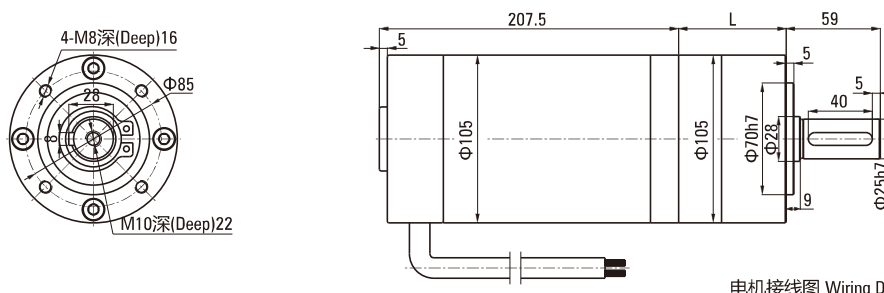


ZPN系列 PLANETARY GEAR MOTOR

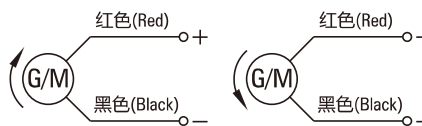
■ ZPNΦ105 BRUSH有刷



■ 外径105直流有刷行星减速电机外形图纸 Outside Diameter 105 DC Brush Motor



电机接线图 Wiring Diagram



电机型号 Motor Type	减速箱型号 Gearbox Model	减速比 Gear Ratio	L尺寸(mm) Dimension
Z105DPN	105ZPN□	一级Stage1	3.65~8.63
		二级Stage2	14~58
		三级Stage3	67~393

■ 有刷直流电机技术参数 Blush DC Motor Technical Data

有刷电机型号 Motor Type	电压 Voltage	功率 Power	空载电流 No-load Current	空载转速 Rated Speed	额定电流 Rated Current	额定转速 Rated Speed	额定力矩 Rated Torque	电机寿命 Motor Life
Type	V	W	A	RPM	A	RPM	N.m	H
Z105DPN12200-30S	12	200	3.5	3500	24	3000	0.637	2000
Z105DPN24400-30S	24	400	2.5	3500	24	3000	1.273	2000
Z105DPN48600-30S	48	600	2.5	3500	17	3000	1.910	2000

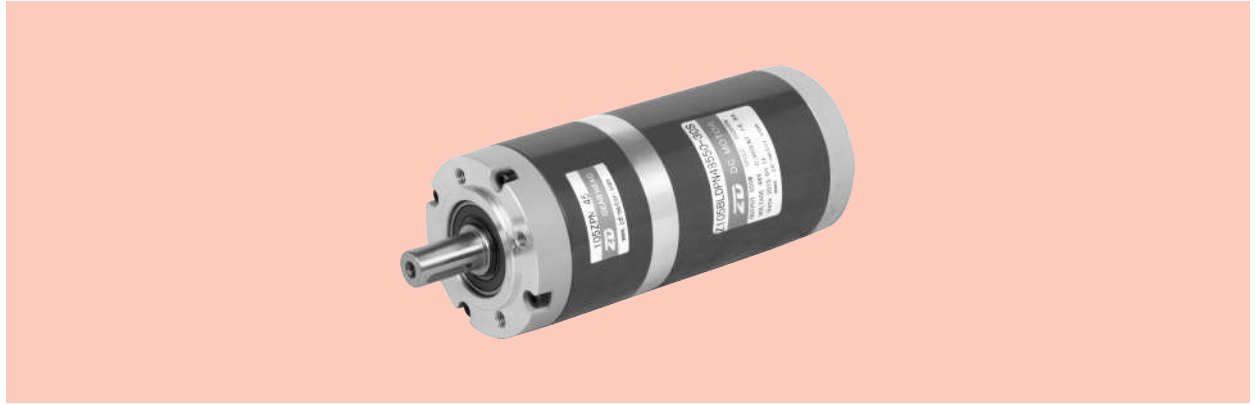
■ 有刷直行星减速电机技术参数 Blush DC Planetary Gear Motor Technical Data-Z105DPN24400-30S

减速比 Ratio	3.65	5.36	6.55	8.63	14	19	25	28	34	45	58	67	81
输出轴转速 r/min Output shaft Speed	821.9	559.7	458	347.6	222.2	158.7	121.9	106.8	88.5	67.1	51.5	44.6	37
允许力矩 N.m Allowable Torque	4.18	6.14	7.51	9.89	14.44	19.60	25.79	28.88	35.07	46.41	59.82	62.28	75.29
减速级数 Reduction Stage	1	1	1	1	2	2	2	2	2	2	2	3	3

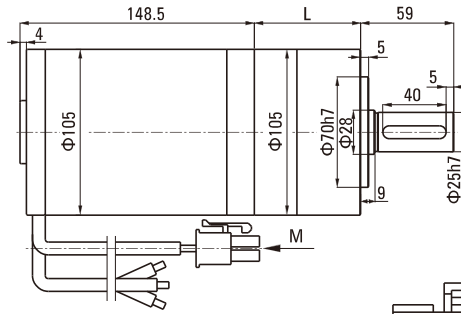
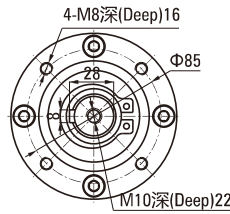
减速比 Ratio	91	103	119	128	146	165	192	232	302	393			
输出轴转速 r/min Output shaft Speed	32.9	29.2	25.2	23.5	20.6	18.1	15.6	13	9.9	7.6			
允许力矩 N.m Allowable Torque	84.58	95.74	110.61	118.98	135.71	153.37	178.47	195	195	195			
减速级数 Reduction Stage	3	3	3	3	3	3	3	3	3	3			

ZPN系列 PLANETARY GEAR MOTOR

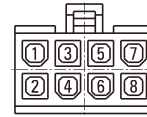
■ ZPNΦ105 BRUSHLESS无刷



■ 外径105直流无刷行星减速电机外形图纸 Outside Diameter 105 DC Brushless Motor



M向视图
(View M)



电机型号 Motor Type	减速箱型号 Gearbox Model	减速比 Gear Ratio	L尺寸(mm) Dimension
Z105BLDPN	105ZPN□	一级Stage1	3.65~8.63
		二级Stage2	14~58
		三级Stage3	67~393

1	2	3	4	5	6	7	8
			GND	Hv	Hw	Hu	+Vcc

■ 无刷直流电机技术参数 BLDC Motor Technical Data

有刷电机型号 Motor Type	电压 Voltage	功率 Power	空载电流 No-load Current	空载转速 Rated Speed	额定电流 Rated Current	额定转速 Rated Speed	额定力矩 Rated Torque	电机寿命 Motor Life
Type	V	W	A	RPM	A	RPM	N.m	H
Z105BLDPN24350-30S	24	350	1.8	3500	18.5	3000	1.114	5000
Z105BLDPN48550-30S	48	550	1.5	3500	14.5	3000	1.751	5000
Z105BLDPN48750-30S	48	750	1.8	3600	19.5	3000	2.386	5000

■ 无刷直行星减速电机技术参数 BLDC Planetary Gear Motor Technical Data-Z105BLDPN48550-30S

减速比 Ratio	3.65	5.36	6.55	8.63	14	19	25	28	34	45	58	67	81
输出轴转速 r/min Output shaft Speed	822	560	458	348	222	159	122	107	89	67	52	45	37
允许力矩 N.m Allowable Torque	5.75	8.45	10.32	13.69	19.85	26.95	35.45	39.71	48.22	63.82	82.25	85.63	103.53
减速级数 Reduction Stage	1	1	1	1	2	2	2	2	2	2	2	3	3
减速比 Ratio	91	103	119	128	146	165	192	232	302	393			
输出轴转速 r/min Output shaft Speed	33	29	25	24	21	18	16	13	9.9	7.6			
允许力矩 N.m Allowable Torque	116.31	131.65	152.10	163.0	186.60	195	195	195	195	195			
减速级数 Reduction Stage	3	3	3	3	3	3	3	3	3	3			