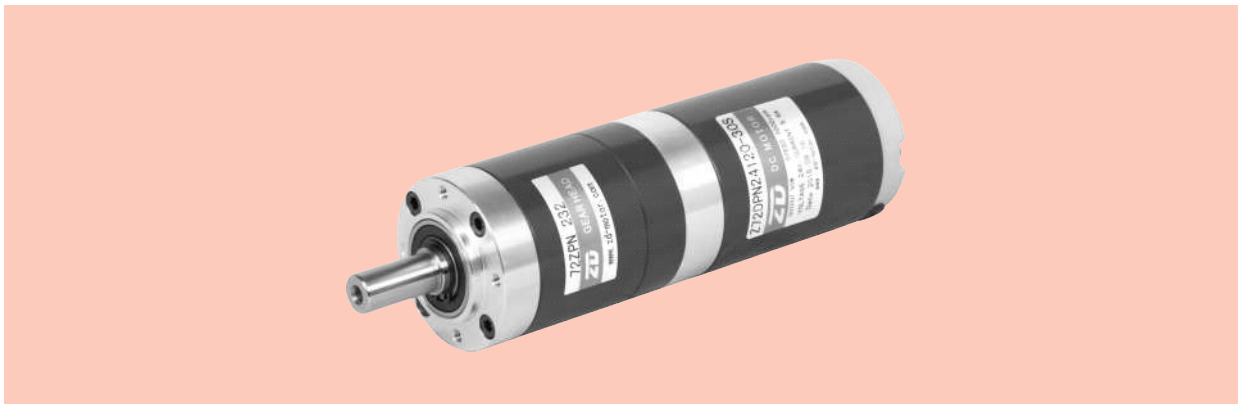
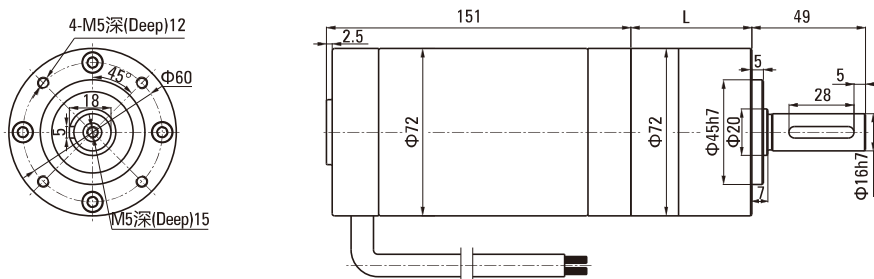


ZPN系列 PLANETARY GEAR MOTOR

ZPNΦ72 BRUSH有刷

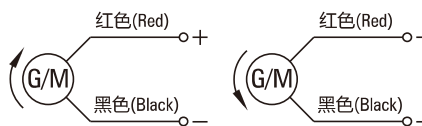


外径72直流有刷行星减速电机外形图纸 Outside Diameter 72 DC Brush Motor



电机型号 Motor Type	减速箱型号 Gearbox Model	减速比 Gear Ratio	L尺寸(mm) Dimension
Z72DPN	72ZPN□	一级Stage1 3.65~8.63	52
		二级Stage2 14~58	72.15
		三级Stage3 67~393	92.3

电机接线图 Wiring Diagram



有刷直流电机技术参数 Blush DC Motor Technical Data

有刷电机型号 Motor Type	电压 Voltage	功率 Power	空载电流 No-load Current	空载转速 Rated Speed	额定电流 Rated Current	额定转速 Rated Speed	额定力矩 Rated Torque	电机寿命 Motor Life
Type	V	W	A	RPM	A	RPM	N.m	H
Z72DPN1260-30S	12	60	2.0	3500	7.2	3000	0.191	2000
Z72DPN2490-30S	24	90	1.5	3400	5.5	3000	0.287	2000
Z72DPN24120-30S	24	120	2.0	3500	7.2	3000	0.382	2000

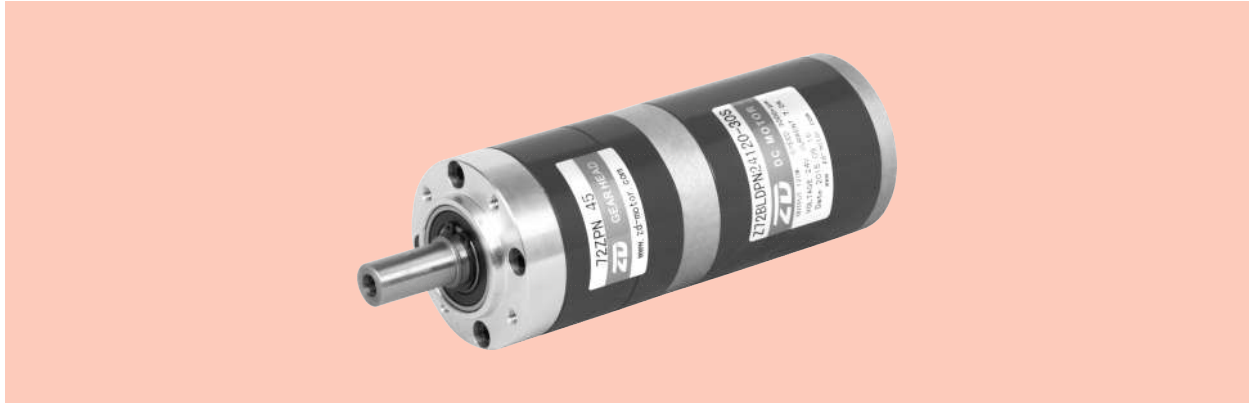
有刷直行星减速电机技术参数 Blush DC Planetary Gear Motor Technical Data-Z72DPN2490-30S

减速比 Ratio	3.65	5.36	6.55	8.63	14	19	25	28	34	45	58	67	81
输出轴转速 r/min Output shaft Speed	822	560	458	348	222	159	122	107	89	67	52	45	37
允许力矩 N.m Allowable Torque	0.94	1.38	1.69	2.23	3.25	4.41	5.80	6.50	7.90	10.44	13.46	14.01	16.94
减速级数 Reduction Stage	1	1	1	1	2	2	2	2	2	2	2	3	3

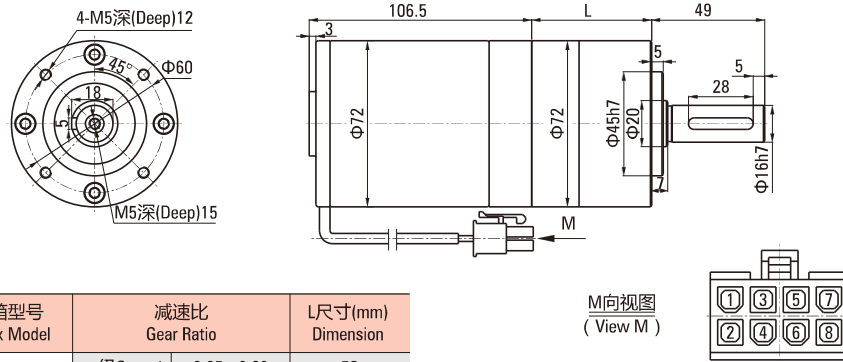
减速比 Ratio	91	103	119	128	146	165	192	232	302	393			
输出轴转速 r/min Output shaft Speed	33	29	25	24	21	18	16	13	9.9	7.6			
允许力矩 N.m Allowable Torque	19.03	21.54	24.89	26.77	30.54	34.51	40.16	48.52	63.37	82.19			
减速级数 Reduction Stage	3	3	3	3	3	3	3	3	3	3			

ZPN系列 PLANETARY GEAR MOTOR

■ ZPNΦ72 BRUSHLESS无刷



■ 外径72直流无刷行星减速电机外形图纸 Outside Diameter 72 DC Brushless Motor



电机型号 Motor Type	减速箱型号 Gearbox Model	减速比 Gear Ratio		L尺寸(mm) Dimension
Z72BLDPN	72ZPN□	一级Stage1	3.65~8.63	52
		二级Stage2	14~58	72.15
		三级Stage3	67~393	92.3

M向视图
(View M)

1	2	3	4	5	6	7	8
U	V	W	GND	Hv	Hw	Hu	+Vcc

■ 无刷直流电机技术参数 BLDC Motor Technical Data

有刷电机型号 Motor Type	电压 Voltage	功率 Power	空载电流 No-load Current	空载转速 Rated Speed	额定电流 Rated Current	额定转速 Rated Speed	额定力矩 Rated Torque	电机寿命 Motor Life
Type	V	W	A	RPM	A	RPM	N.m	H
Z72BLDPN24120-30S	24	120	0.8	3700	6.5	3000	0.382	5000
Z72BLDPN24150-30S	24	150	1.5	3800	8.5	3000	0.478	5000
Z72BLDPN24180-30S	24	180	2.0	3900	10.5	3000	0.573	5000

■ 无刷直流行星减速电机技术参数 BLDC Planetary Gear Motor Technical Data-Z72BLDPN24120-30S

减速比 Ratio	3.65	5.36	6.55	8.63	14	19	25	28	34	45	58	67	81
输出轴转速 r/min Output shaft Speed	822	560	458	348	222	159	122	107	89	67	52	45	37
允许力矩 N.m Allowable Torque	1.25	1.84	2.25	2.97	4.33	5.88	7.74	8.66	10.52	13.92	17.95	18.68	22.59
减速级数 Reduction Stage	1	1	1	1	2	2	2	2	2	2	2	3	3

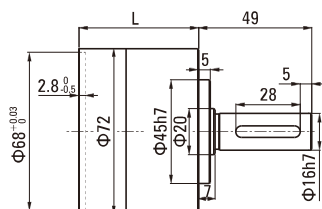
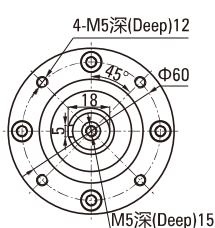
减速比 Ratio	91	103	119	128	146	165	192	232	302	393			
输出轴转速 r/min Output shaft Speed	33	29	25	24	21	18	16	13	9.9	7.6			
允许力矩 N.m Allowable Torque	25.38	28.72	33.18	35.69	40.71	46.01	53.54	64.70	84	84			
减速级数 Reduction Stage	3	3	3	3	3	3	3	3	3	3			

ZPN系列 PLANETARY GEAR MOTOR

ZPNΦ72



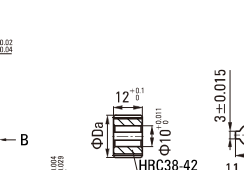
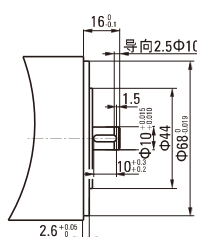
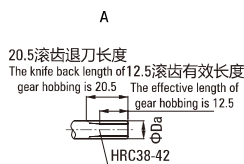
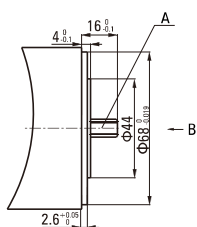
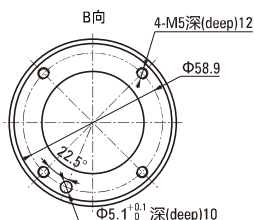
外径72行星减速器 Outdiameter 72mm Planetary Gearbox



减速箱型号 Gearbox Model	减速比 Gear Ratio	L尺寸(mm) Dimension
72ZPN□	一级Stage1	3.65~8.63
	二级Stage2	14~58
	三级Stage3	67~393

传动级数 Transmission Stage	一级 Stage 1	二级 Stage 2	三级 Stage 3
传动效率 Transmission Efficiency	90%	81%	73%
最大径向负载 Max radial load	760N	760N	760N
最大轴向负载 Max axial load	160N	160N	160N
额定扭矩 Rated Torque	14N.m	42N.m	84N.m
瞬间承受扭矩 Instant beared torque	2倍与额定扭矩 Two times of the rated torque		
工作温度 Operating temperature	-10°C ~ + 80°C		
润滑方式 Lubrication type	终生润滑 Lifetime lubrication		
安装方式 Mounting type	任意安装 Any		
推荐输入转速 Recommend input speed	≤3000RPM		
输入与输出转向 Input and output direction	相同 Same direction		
噪音 Noise	< 60dB(A) (L=1m,3000rpm)		

电机配合方案 Motor matching scheme



Da	一级速比 One stage of gear ratio	二级速比 Second stage of gear ratio	三级速比 Third stage of gear ratio
Φ12.47 ^{-0.05} _{-0.08}	5.36	-	103
		-	119
Φ10.27 ^{-0.05} _{-0.08}	6.55	28	146
		34	-
Φ7.99 ^{-0.05} _{-0.08}	8.63	45	165
		58	192
		-	232
		-	302
		-	393
Φ18.68 ^{-0.05} _{-0.08}	3.65	14	67
		19	81
		25	91
		-	128