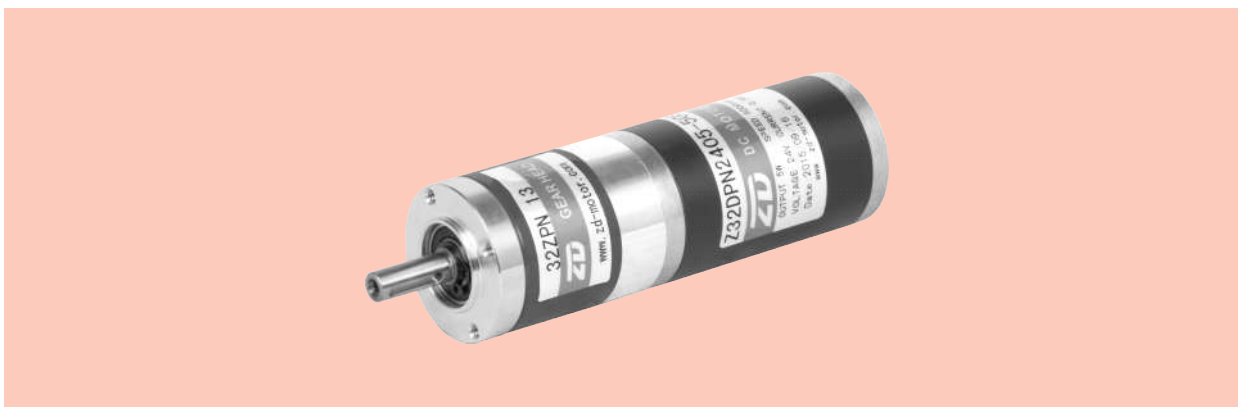
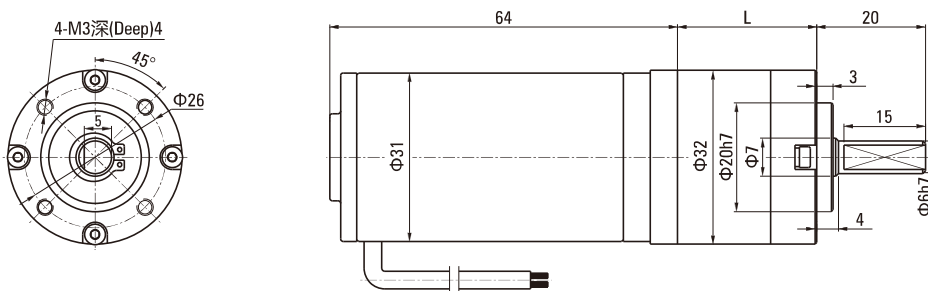


ZPN系列 PLANETARY GEAR MOTOR

■ ZPNΦ32 BRUSH有刷

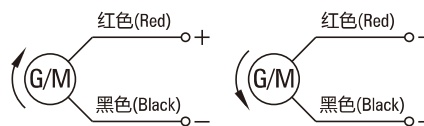


■ 外径32直流有刷行星减速电机外形图纸 Outside Diameter 32 DC Brush Motor



电机型号 Motor Type	减速箱型号 Gearbox Model	减速比 Gear Ratio		L尺寸(mm) Dimension
Z32DPN	32ZPN□	一级Stage1	3.7~6.75	25.6
		二级Stage2	14~46	35.9
		三级Stage3	51~308	46.2

电机接线图 Wiring Diagram



■ 有刷直流电机技术参数 Blush DC Motor Technical Data

有刷电机型号 Motor Type	电压 Voltage	功率 Power	空载电流 No-load Current	空载转速 Rated Speed	额定电流 Rated Current	额定转速 Rated Speed	额定力矩 Rated Torque	电机寿命 Motor Life
Type	V	W	A	RPM	A	RPM	N.m	H
Z32DPN2410-40S	24	10	0.4	5000	0.7	4000	0.024	2000
Z32DPN2415-50S	24	15	0.5	6000	1.1	5000	0.029	2000

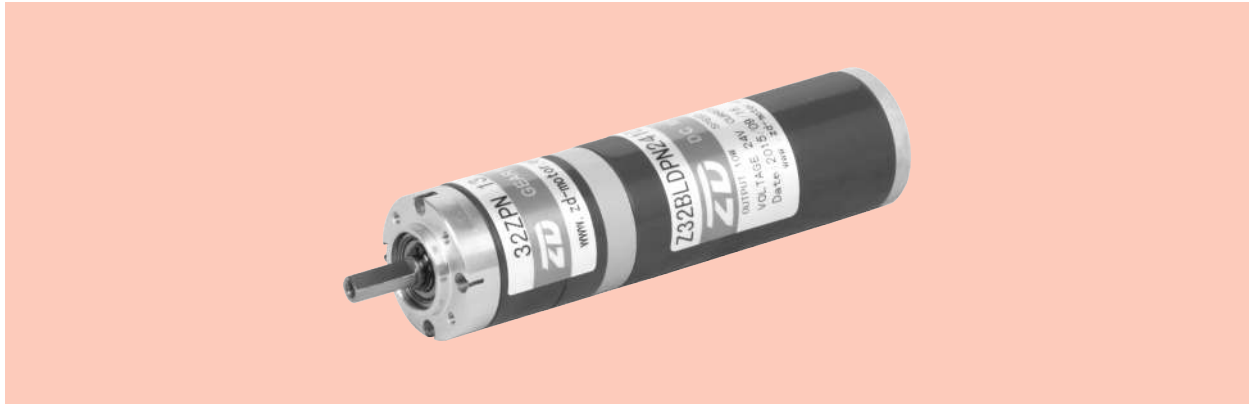
■ 有刷直行星减速电机技术参数 Blush DC Planetary Gear Motor Technical Data-Z32DPN2410-40S

减速比 Ratio	3.7	4.29	5.18	6.75	14	19	25	29	35	46	51	68	79
输出轴转速 r/min Output shaft Speed	1081	932	772	592	285	210	160	137	114	87	78	59	50
允许力矩 N.m Allowable Torque	0.080	0.092	0.111	0.145	0.270	0.367	0.483	0.561	0.6777	0.890	0.889	1.185	1.3777
减速级数 Reduction Stage	1	1	1	1	2	2	2	2	2	2	3	3	3

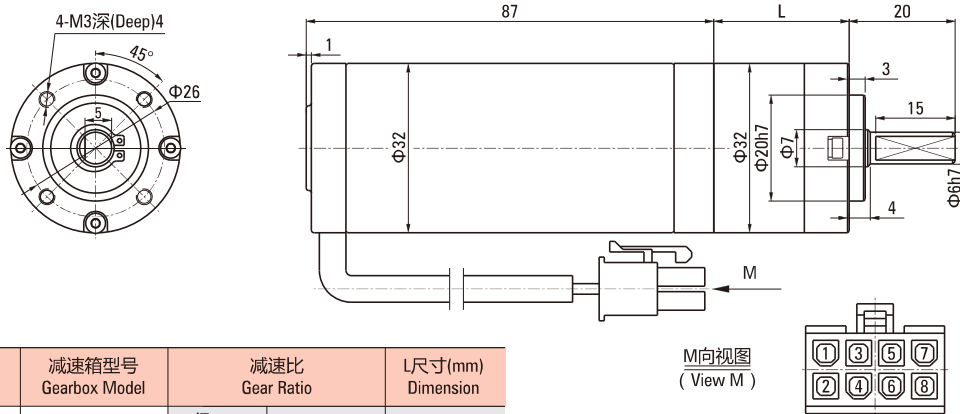
减速比 Ratio	93	100	115	130	150	169	195	236	308				
输出轴转速 r/min Output shaft Speed	43	40	35	31	26	23	20	17	13				
允许力矩 N.m Allowable Torque	1.621	1.743	2.004	2.266	2.614	2.945	3.400	4.000	4.000				
减速级数 Reduction Stage	3	3	3	3	3	3	3	3	3				

ZPN系列 PLANETARY GEAR MOTOR

■ ZPNΦ32 BRUSHLESS无刷



■ 外径32直流无刷行星减速电机外形图纸 Outside Diameter 32 DC Brushless Motor



电机型号 Motor Type	减速箱型号 Gearbox Model	减速比 Gear Ratio	L尺寸(mm) Dimension
Z32BLDPN	32ZPN□	一级Stage1	3.7~6.75
		二级Stage2	14~46
		三级Stage3	51~308

1	2	3	4	5	6	7	8
U	V	W	GND	Hv	Hw	Hu	+Vcc

■ 无刷直流电机技术参数 BLDC Motor Technical Data

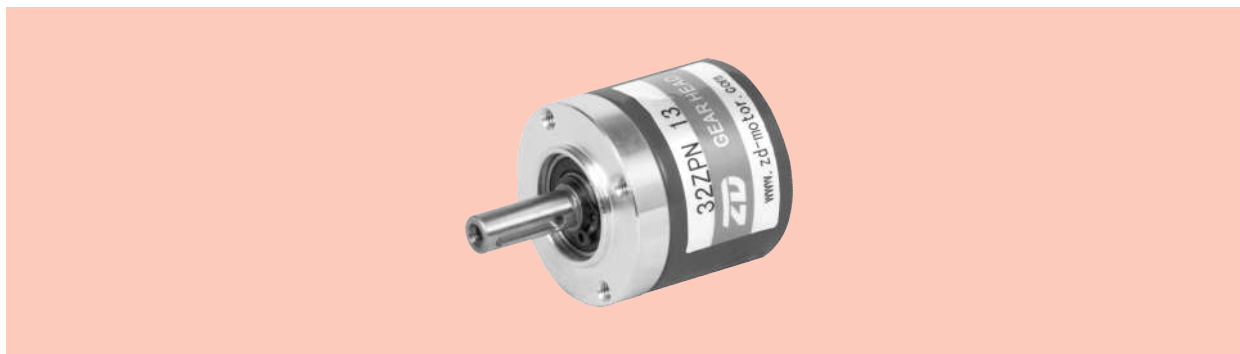
有刷电机型号 Motor Type	电压 Voltage	功率 Power	空载电流 No-load Current	空载转速 Rated Speed	额定电流 Rated Current	额定转速 Rated Speed	额定力矩 Rated Torque	电机寿命 Motor Life
Type	V	W	A	RPM	A	RPM	N.m	H
Z32BLDPN2410-40S	24	10	0.35	5000	0.7	4000	0.024	5000
Z32BLDPN2415-50S	24	15	0.50	6500	1.1	5000	0.029	5000

■ 无刷直行星减速电机技术参数 BLDC Planetary Gear Motor Technical Data-Z32BLDPN2415-50S

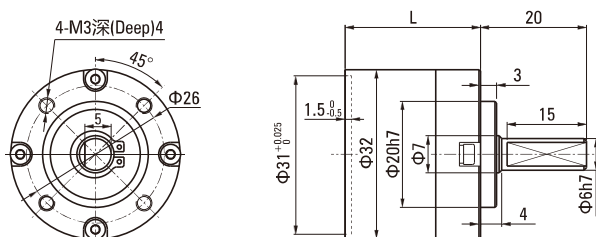
减速比 Ratio	3.7	4.29	5.18	6.75	14	19	25	29	35	46	51	68	79
输出轴转速 r/min Output shaft Speed	1351	1166	965	740	257	263	200	172	143	108	98	73	63
允许力矩 N.m Allowable Torque	0.095	0.111	0.134	0.124	0.325	0.441	0.580	0.673	0.812	1.067	1.067	1.422	1.652
减速级数 Reduction Stage	1	1	1	1	2	2	2	2	2	2	3	3	3
减速比 Ratio	93	100	115	130	150	169	195	236	308				
输出轴转速 r/min Output shaft Speed	54	50	43	38	33	29	25	21	16				
允许力矩 N.m Allowable Torque	1.945	2.091	2.405	2.719	3.137	3.535	4.000	4.000	4.000				
减速级数 Reduction Stage	3	3	3	3	3	3	3	3	3				

ZPN系列 PLANETARY GEAR MOTOR

■ ZPNΦ32



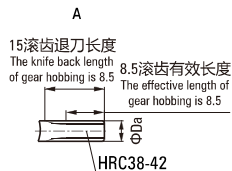
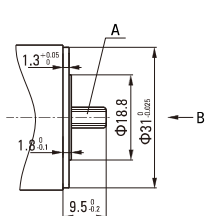
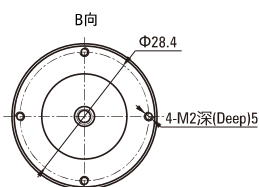
■ 外径32行星减速器 Outdiameter 32mm Planetary Gearbox



减速箱型号 Gearbox Model	减速比 Gear Ratio	L尺寸(mm) Dimension
32ZPN□	一级Stage1	3.7~6.75
	二级Stage2	14~46
	三级Stage3	51~308

传动级数 Transmission Stage	一级 Stage 1	二级 Stage 2	三级 Stage 3
传动效率 Transmission Efficiency	90%	81%	73%
最大径向负载 Max radial load	140N	140N	140N
最大轴向负载 Max axial load	50N	50N	50N
额定扭矩 Rated Torque	1N.m	2.25N.m	4N.m
瞬间承受扭矩 Instant beared torque	2倍与额定扭矩 Two times of the rated torque		
工作温度 Operating temperature	-10°C ~ + 80°C		
润滑方式 Lubrication type	终生润滑 Lifetime lubrication		
安装方式 Mounting type	任意安装 Any		
推荐输入转速 Recommend input speed	≤3000RPM		
输入与输出转向 Input and output direction	相同 Same direction		
噪音 Noise	< 60dB(A) (L=1m,3000rpm)		

电机配合方案 Motor matching scheme



Da	一级速比 One stage of gear ratio	二级速比 Second stage of gear ratio	三级速比 Third stage of gear ratio
Φ8.02 ^{-0.05} / _{-0.08}	3.7	14	51
Φ7.05 ^{-0.05} / _{-0.08}	4.29	-	68
		-	79
Φ5.82 ^{-0.05} / _{-0.08}	5.18	19	100
		-	115
Φ4.57 ^{-0.05} / _{-0.08}	6.75	25	93
		29	130
		35	150
		46	-