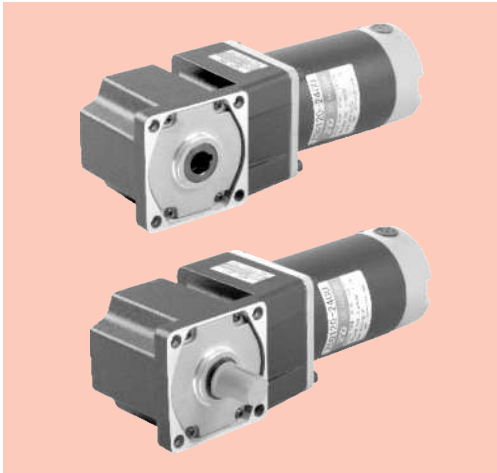


弧锥直角 SPIRAL BEVEL RIGHT ANGLE

■ 120W □ 90mm



■ 装有减速器时的容许转矩 Gear Motor-Torque Table

- 减速机·中间减速机另售。Gearhead and Intermediate gearhead are sold separately.
- 减速机品名的□中为减速比的数值。Enter the reduction ratio into the blank(□) within the model name.
 - 色表示分别从电动机轴轴端和减速机轴轴端看时，电机轴与输出轴转向反方向运转。其他则为同一方向运转。
 - Indicates the opposite rotating direction between motor shaft and gearbox shaft while others are in same direction.
- 转速是以电动机的额定转速为基准除以减速比而算出来的数值。实际转速将随负载大小变化而比所示数值减少2%~20%左右。The speed is calculated by dividing the motor's synchronous speed by the reduction ratio. The actual speed is 2%~20% less than the displayed value, depending on the size of the load.
- 希望以大于下表的减速比进行进一步减速时，可在电动机与减速机之间安装减速比为10的中间减速机。这时的容许转矩为20N·m。
- To reduce the speed beyond the reduction ratio in the following table, attach an intermediate gearhead (reduction ratio: 10) between the reducer and motor. In that case, the permissible torque is 20N·m.

■ 容许力矩单位 Allowance Torque Unit: 上段 Upside (N.m) / 下段 Belowside (kgf.cm)

机型Type 电动机/减速机 Motor/Gearhead	减速比Gear Ratio	7.5	9	12.5	15	18	25	30	36	50	60	75	90	100	120	150	180
	转速Speed r/min	346	288	208	173	144	104	86	72	52	43	34	28	26	21	17	14
Z5D120-24GU-26S	5GU□RC/ 5GU□RT	2.41	5.44	4.02	4.82	5.78	8.03	9.64	10.4	14.5	17.4	20.0	20.0	20.0	20.0	20.0	20.0
		24.6	55.5	41.0	48.2	59.0	81.9	98.3	106	148	177	200	200	200	200	200	200

■ 外形图 (单位:mm) Dimensions (Unit:mm)

