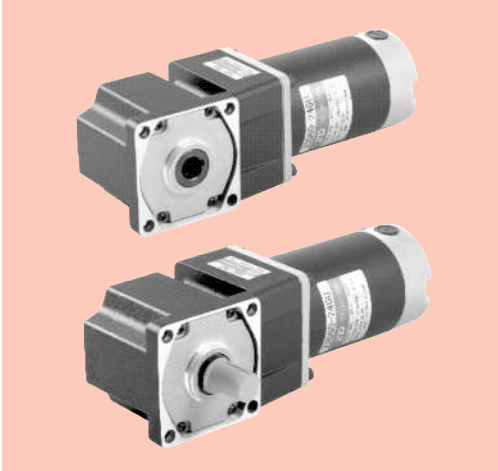


# 弧锥直角 SPIRAL BEVEL RIGHT ANGLE

60W □ 90mm



## 装有减速器时的容许转矩 Gear Motor-Torque Table

- 减速机·中间减速机另售。Gearhead and Intermediate gearhead are sold separately.
- 减速机品名的□中为减速比的数值。Enter the reduction ratio into the blank(□) within the model name.
  - 色表示分别从电动机轴轴端和减速机轴轴端看时，电机轴与输出轴转向反方向运转。其他则为同一方向运转。
  - Indicates the opposite rotating direction between motor shaft and gearbox shaft while others are in same direction.
- 转速是以电动机的额定转速为基准除以减速比而算出来的数值。实际转速将随负载大小变化而比所示数值减少2%~20%左右。The speed is calculated by dividing the motor's synchronous speed by the reduction ratio. The actual speed is 2%~20% less than the displayed value, depending on the size of the load.
- 希望以大于下表的减速比进行进一步减速时，可在电动机与减速机之间安装减速比为10的中间减速机。这时的容许转矩为20N·m。
- To reduce the speed beyond the reduction ratio in the following table, attach an intermediate gearhead (reduction ratio: 10) between the reducer and motor. In that case, the permissible torque is 20N·m.

## 容许力矩单位 Allowance Torque Unit: 上段 Upside (N.m) / 下段 Belowside (kgf.cm)

机型Type 电动机/减速机 Motor/Gearhead	减速比Gear Ratio	7.5	9	12.5	15	18	25	30	36	50	60	75	90	100	120	150	180
	转速Speed r/min	373	311	224	186	155	112	93	77	56	46	37	31	28	23	18	15
Z5D60-24GU-28S	5GU□RC/ 5GU□RT	1.12	1.34	1.86	2.24	2.69	3.37	4.48	4.83	6.71	8.06	10.1	12.1	13.4	16.1	20.0	20.0
		11.4	13.7	19.0	22.8	27.4	38.0	45.7	49.3	68.4	82.2	103	123	137	164	200	200

## 外形图 (单位:mm) Dimensions (Unit:mm)

