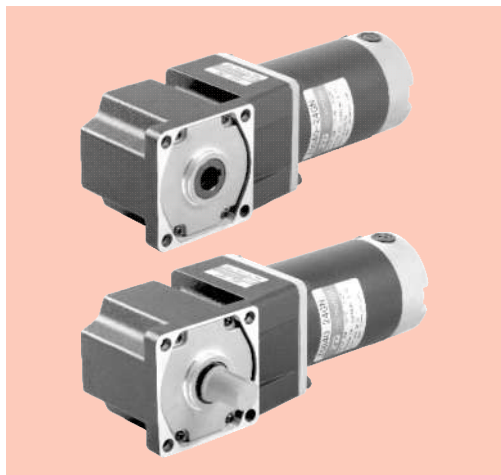


弧锥直角 SPIRAL BEVEL RIGHT ANGLE

■ 40W □ 90mm



■ 装有减速器时的容许转矩 Gear Motor-Torque Table

- 减速机·中间减速机另售。Gearhead and Intermediate gearhead are sold separately.
- 减速机品名的□中为减速比的数值。Enter the reduction ratio into the blank(□) within the model name.
 - 色表示分别从电动机轴轴端和减速机轴轴端看时，电机轴与输出轴转向反方向运转。其他则为同一方向运转。
 - Indicates the opposite rotating direction between motor shaft and gearbox shaft while others are in same direction.
- 转速是以电动机的额定转速为基准除以减速比而算出来的数值。实际转速将随负载大小变化而比所示数值减少2%~20%左右。

The speed is calculated by dividing the motor's synchronous speed by the reduction ratio. The actual speed is 2%~20% less than the displayed value, depending on the size of the load.
- 希望以大于下表的减速比进行进一步减速时，可在电动机与减速机之间安装减速比为10的中间减速机。这时的容许转矩为20N·m.
- To reduce the speed beyond the reduction ratio in the following table, attach an intermediate gearhead (reduction ratio: 10) between the reducer and motor. In that case, the permissible torque is 20N·m.

■ 容许力矩单位 Allowance Torque Unit: 上段 Upside (N.m) / 下段 Belowside (kgf.cm)

机型Type 电动机/减速机 Motor/Gearhead	减速比Gear Ratio	7.5	9	12.5	15	18	25	30	36	50	60	75	90	100	120	150	180
	转速Speed r/min	373	311	224	186	155	112	93	77	56	46	37	31	28	23	18	15
Z5D40-24GU-28S	5GU□RC/ 5GU□RT	0.75	0.90	1.24	1.49	1.79	2.32	2.78	3.01	4.18	5.37	6.71	8.06	8.95	10.7	13.4	16.1
		7.65	9.18	12.6	15.2	18.3	23.7	28.4	30.7	42.6	54.8	68.4	82.2	91.3	109	137	164

■ 外形图 (单位:mm) Dimensions (Unit:mm)

