

直流电动机

DC MOTORS

■ 250W □ 104mm



电机性能参数 Motor Performance Parameters

型号 Model	电压 Voltage	功率 Power	空载参数No-load Parameters		负载参数Load Parameters			电刷寿命 Brush Life	电机重量 Motor Weight
			转速Speed	电流Current	转速Speed	力矩Torque	电流Current		
	V	W	r/min	A	r/min	mN.m	A	H	kg
Z6D250-24 □	24	250	3400	3.0 Max.	3000	796	16.0	2000	3.2
Z6D250-90 □	90	250	3300	1.0 Max.	3000	796	4.0	2000	3.2
Z6D250-220□	220	250	3300	0.8 Max.	3000	796	2.0	2000	3.2

- 电机电压、功率及转速可在配件尺寸等条件允许下根据客户要求定制。
Motor voltage, power and speed will be customized according to his requestment under the allowed circumstance of adoptable dimension.

种类 Type

● 电动机 Motor

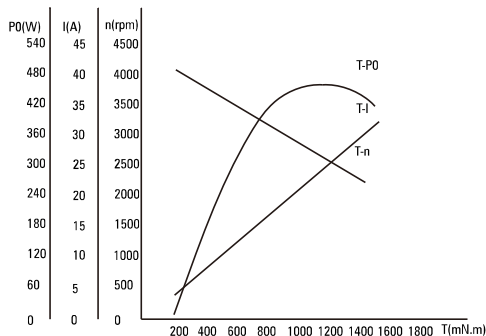
机型 Type	型号Model		
	齿轮轴型 Pinion Shaft	圆轴型 Round Shaft	圆轴型 Round Shaft
导线型 Lead Wire Type	Z6D250-24GU	Z6D250-24A	Z6D250-24A1
	Z6D250-90GU	Z6D250-90A	Z6D250-90A1
	Z6D250-220GU	Z6D250-220A	Z6D250-220A1

● 平行轴减速器 (另售) Parallel Shaft Gearhead (Sold Separately)

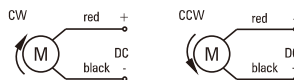
减速器种类 Gearhead Type	减速器型号 Gearhead Model	减速比 Gear Ratio
长寿命●低噪音 Long Life ● Low Noise	6GU□K	3、3.6、5、6、7.5、9、 12.5、15、18、25、30、 36、50、60、75、90、 100、120、150、180、200

- 减速器型号的□中为减速比的数值
Enter the gear ratio in the box (□) within the model name

● 电机特性曲线 Characteristic Curve Of Motor



● 电机接线图 Wiring Diagram Of Motor



- 标准引出线长度:300mm±10,型号:UL1015规格:AWG14;电机引出线长度、型号在配件尺寸等条件允许的情况下可根据客户要求定制。
Stanclard length of lead wire:300mm±10, model: U11015 type: AWG14; lead wire length, model will be customised by dient requestmant under allowed circumstance of adoptable dimension.

■ 装有减速器时的容许转矩 Gear Motor-Torque Table

- 减速器另售·中间减速器另售。
Gearheads are sold separately. Decimal gearheads are not available.
- 减速品型号的□中为减速比的数值。
Enter the gear ratio in the box(□) within the model name.
- □色表示与电动机同一方向运转，其他则为相反方向。
The colored background □ indicates the same rotating direction of the motor while the rotating direction of others are opposite.
- 转速是以电动机的额定转速为基准除以减速比而算出来的数值。实际转速将随负载大小变化而比所示数值减少2%~20%左右。
The speed is calculated by dividing the motor's synchronous speed by the gear ratio. The actual speed is 2%~20% less than the displayed value, depending on the size of the load.
- 希望以大于下表的减速比进行进一步减速时，可在电动机与减速机之间安装减速比为10的中间减速机。
这时的容许转矩为40N·m。
To reduce the speed beyond the gear ratio in the table, attach a decimal gearhead(gear ratio:10)between the gearhead and motor. In that case, the permissible torque is 40N·m.

■ 容许力矩单位 Allowance Torque Unit : 上段 Upside (N.m) /下段 Belowside (kgf.cm)

型号 Type	减速比 Gear Ratio	3	3.6	5	6	7.5	9	12.5	15	18	25	30	36	50	60	75	90	100	120	150	180	200
Z6D250-24GN	转速 Speed r/min	1000	833	600	500	400	333	240	200	166	120	100	83	60	50	40	33	30	25	20	16	15
	6GU□K	1.93	2.32	3.22	3.87	4.83	5.80	7.25	8.70	10.4	13.1	15.7	18.8	26.1	31.3	39.2	40.0	40.0	40.0	40.0	40.0	40.0
		19.0	22.7	31.6	37.9	47.4	56.9	71.1	85.3	102	128	154	184	256	307	384	400	400	400	400	400	400

■ 容许悬挂负载·容许轴向负载 To Allow The Hoisting Of The Load Allow Axial Load

电动机(圆轴型) → P272页 Motor(Round Shaft) → P272
减速机 → P272页 Gearhead → P272

■ 减速机的容许负载惯性惯量 J Permissible Load Inertia J For Gearhead

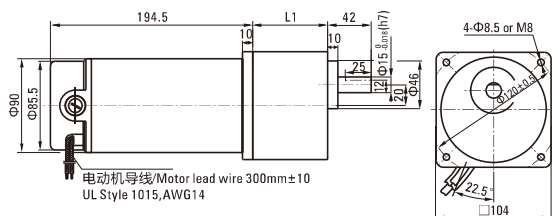
→ P272页 → P272

■ 外形图(单位 mm) Dimensions(Unit mm)

减速器附有安装用螺丝 Mounting screws are included with gearhead.

● 导线型 Lead Wiring Type

重量 Weight : 电动机 Motor : 3.2kg 减速机 Gearhead : 1.5kg

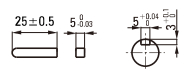


电动机型号 Motor Model	减速器型号 Gearhead Model	减速比 Gear Ratio	L1
Z6D250-24GU Z6D250-90GU Z6D250-220GU	6GU□K	3~200	72

- 减速器型号的□中为减速比的数值
Enter the gear ratio in the box (□) within the model name

● 键·键槽(减速器附件)

Key·Keyway (The Key Is Included With The Gearhead)



● 圆轴型的转轴部分 Shaft Section Of Round Shaft Type

除重量及轴部外电动机外形与齿轮轴型相同。
Excluding weight and the shaft section motor shape are the same as those of the pinion shaft type.

