

采用了偏轴伞齿轮的高强度、高转矩电动机 High strength and high torque motor with eccentric shaft bevel gear

※偏轴伞齿轮仅限于直交轴减速机 The eccentric shaft bevel gear is limited to right-angle gear motor

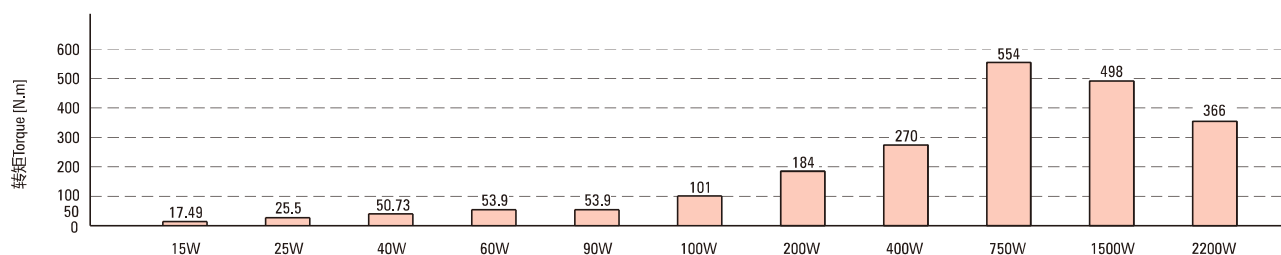
高功率电动机结合高强度偏轴伞齿轮减速机的产品。高转矩的减速电动机可以满足顾客所需的广泛用途。

High power motor combined with high strength eccentric shaft bevel gear reducer product. High torque reduction motor can meet the needs of customers for a wide range of purposes.

容许转矩 Allowable Torque

以下图表为各功率的减速机电动机所能发挥的最大容许转矩。 The following chart shows the maximum allowable torque the gear motor can output.

● 直交轴 Right-angle shaft



丰富的减速比产品阵容 Rich range of gearmotors and ratios

减速比从5~240，共有17种种类丰富且划分精细的机型。可根据用途，从直交轴（中空轴、中实轴）的各输出轴中选择最适合的产品。

Reduction ratio from 5~240, a total of 17 types of rich and finely divided models. According to the utility, the most suitable product is selected from each output shaft of the parallel axis, the direct cross shaft (the hollow shaft and the middle solid shaft).

● 直交轴（中空轴） Right-angle shaft(hollow shaft)



F2减速比共有14种类

There are 14 types of reduction ratio

10、15、20、25、30、40、50、60、80、100、120、160、200、240

● 直交轴（中实轴） Right-angle shaft(solid shaft)



F2减速比共有14种类

There are 14 types of reduction ratio

10、15、20、25、30、40、50、60、80、100、120、160、200、240



F3减速比共有17种类

There are 17 types of reduction ratio

5、7.5、10、12、15、20、25、30、40、50、60、80、100、120、160、200、240



F3减速比共有17种类

There are 17 types of reduction ratio

5、7.5、10、12、15、20、25、30、40、50、60、80、100、120、160、200、240

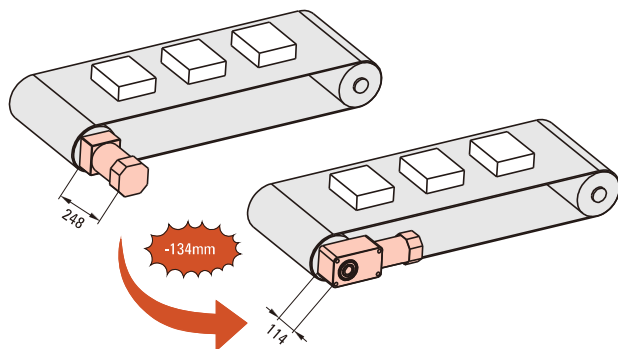
实现装置小型化，节约开发成本 To achieve miniaturization, saving development costs

(直交轴减速电动机) (Right angle speed reducer motor)

■ 最适于节省空间 The Most Suitable To Save Space

负载轴与电动机部分成直角，故可节省作业空间。

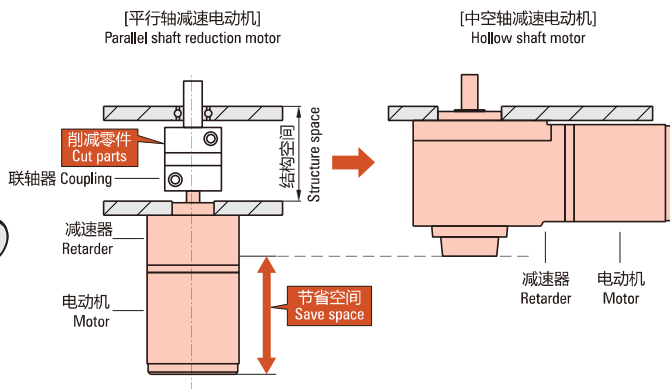
The load shaft and the electric motor are at right angles, so the working space can be saved.



■ 节约成本 Cost Savings

中空轴减速电动机还简化了连结零件，从而可减少零件成本和组装工时。

The hollow shaft reduction motor also simplifies the connecting parts, thereby reducing the cost of parts and assembling working hours.



图为输出功率200W，减速比5的平行轴减速电动机与直交轴减速电动机的比较。

The figure is the comparison of the output power 200W, the reduction ratio of 5 parallel shaft motor and the speed reduction motor.

适用于与变频器组合使用

Suitable for use in combination with frequency converter

可实现低速至高速的广泛速度控制。而且速度受负载影响较小，速度控制更加稳定。

Can achieve low speed to high speed of the extensive speed control. And the speed is less affected by the load, the speed control is more stable.

安装自由度高的设计 High degree of freedom of the design

(直交轴减速电动机) (Direct axis speed reducer motor)

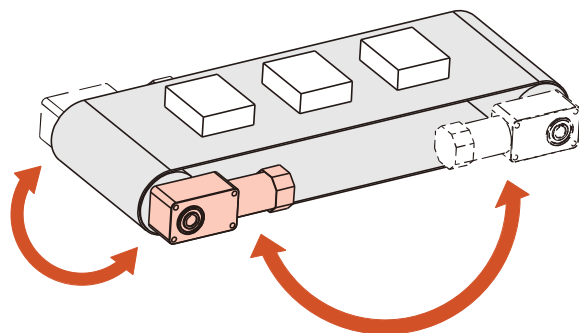
■ 左右同心轴构造 Left And Right Concentric Axis Structure

减速机的输出轴位于安装面上下方向的中心处的构造。

安装在输送机等装置的时候，不管安装方向是向左还是向右，都不需要改变安装孔的位置。

The output shaft of the speed reducer is arranged at the center of the upper and the lower direction of the mounting surface.

When installed in the conveyor and other devices, whether the installation direction is to the left or right, do not need to change the location of the installation hole.



中空轴减速电动机还简化了连结零件，从而可减少零件成本和组装工时。

The hollow shaft reduction motor also simplifies the connecting parts, thereby reducing the cost of parts and assembling working hours.

