

## 可逆电动机 REVERSIBLE MOTORS

■ 60W □ 90mm



### 规格 Specs 30分钟额定 30 Minutes Rating

| 型号 Model · 类型 Type<br>上段: 齿轮轴 Upper: Pinion Shaft<br>下段()内: 圆轴 Below: Round Shaft |   | 输出功率<br>Output power<br>W | 电压<br>Voltage<br>V | 频率<br>Frequency<br>Hz | 电流<br>Current<br>A | 启动转矩<br>Starting Torque<br>mN.m | 额定转矩<br>Rated Torque<br>mN.m | 额定转速<br>Rated Speed<br>r/min | 电容器容量<br>Capacitor<br>μF |
|---|---|---------------------------|--------------------|-----------------------|--------------------|---------------------------------|------------------------------|------------------------------|--------------------------|
| 导线型<br>Lead Wire Type<br>外形图 Dimensions ①   | 端子箱型<br>Terminal Box Type<br>外形图 Dimensions ② |                           |                    |                       |                    |                                 |                              |                              |                          |
| 5RK60GU-AF  | 5RK60GU-AFT                                   | 60                        | 1ph 100            | 50                    | 1.26               | 470                             | 470                          | 1250                         | 25                       |
|   |   |                           |                    | 60                    | 1.70               |                                 | 380                          | 1550                         |                          |
| 5RK60GU-EF  | 5RK60GU-EFT                                   | 60                        | 1ph 110            | 60                    | 1.05               | 330                             | 380                          | 1550                         | 15                       |
|   |   |                           | 1ph 120            |                       |                    | 380                             |                              |                              |                          |
| 5RK60GU-CF  | 5RK60GU-CFT                                   | 60                        | 1ph 220            | 50                    | 0.55               | 420                             | 470                          | 1250                         | 4.5                      |
|   |   |                           | 1ph 230            |                       | 0.60               | 460                             |                              |                              |                          |
| 5RK60GU-HF  | 5RK60GU-HFT                                   | 60                        | 1ph 220            | 60                    | 0.55               | 420                             | 380                          | 1550                         | 4.5                      |
|   |   |                           | 1ph 230            |                       | 0.60               | 460                             |                              |                              |                          |

● 可逆电动机的额定转矩、启动转矩数值均为未安装简易制动时的数值。

Values shown for rated torque and starting torque are measured for operation without the friction brake installed.

● 各种安全规格以电动机铭牌上的型号取得认定。

When the motor is approved under various safety standards, the model name on the nameplate is the approved model name.

● (P): 此为配件选项, 如需要此功能, 型号后需带 "P"。

This option for the parts, such as the need for this feature, models need to bring "P".

● 电动机温度下降后会自动恢复运行, 故在进行检查作业时请务必事先切断电源。

When the motor temperature drops, the thermal protector closes and the motor restarts. Be sure to turn the motor off before inspecting.

● 注: "-A" 型号中电压为110V时, 配置电容器容量以实际铭牌为准。

Note: "-A" it means the voltage 110V, the assembly capacitor value it is according to the label.

### 装有减速器时的容许转矩 Gear Motor-Torque Table

● 减速器·中间减速器另售。● 电动机型号的□中为表示带端子箱型的记号(T)。

Gearhead and mid-gearbox can be sold separately. Enter the code that represents the terminal box type (T) in the box (□) within the model name.

● 减速器型号的□中为减速比的数值。□色表示与电动机同一方向运转, 其他则为相反方向。

Enter the gear ratio in the box (□) within the model name.

The colored background □ indicates the same rotating direction of the motor while the rotating direction of others are opposite.

● 转速是以电动机的同步转速 (50Hz:1500r/min、60Hz:1800r/min) 为基准除以减速比而算出来的数值。实际转速将随负载大小变化而比所示数值减少2%~20%左右。The speed is calculated by dividing the motor's synchronous speed (50Hz:1500r/min、60Hz:1800r/min) by the gear ratio. The actual speed is 2%~20% less than the displayed value, depending on the size of the load.

● 希望以大于下表的减速比进行进一步减速时, 可在电动机与减速器之间安装减速比为10的中间减速器。这时的容许转矩为20N·m。

To reduce the speed beyond the gear ratio in the table, attach a mid-gearbox (gear ratio:10) between the gearhead and motor. In that case, the permissible torque is 20N·m.

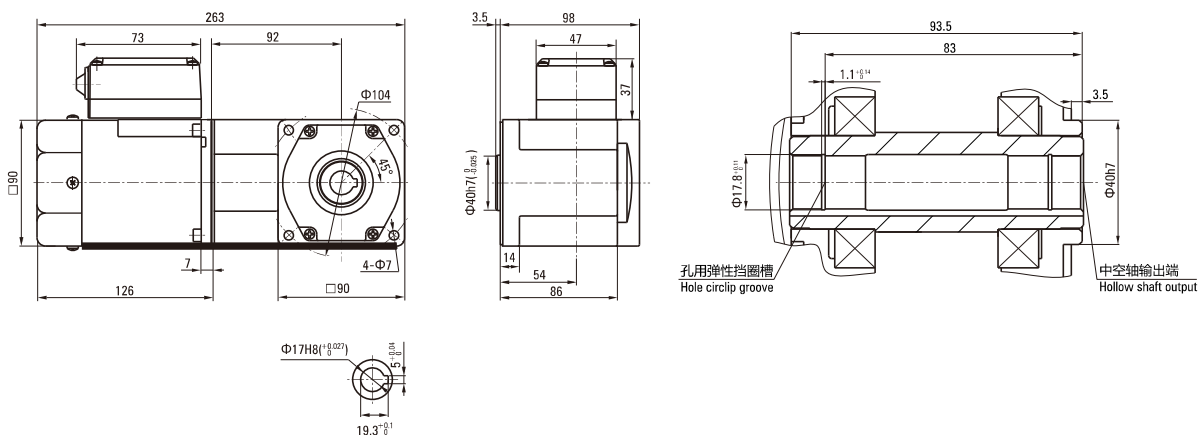
# 弧锥直角 SPIRAL BEVEL RIGHT ANGLE

容许力矩单位 Allowance Torque Unit: 上段 Upside (N.m) / 下段 Belowside (kgf.cm)

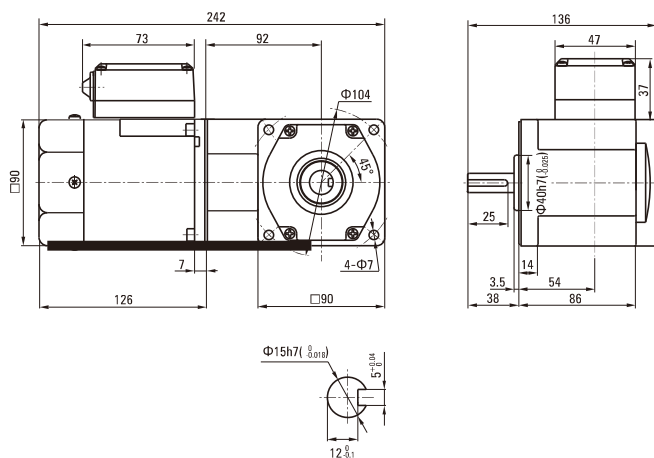
| 机型 Type   |                   | 减速比 Gear Ratio              | 7.5  | 9    | 12.5  | 15    | 18    | 25    | 30    | 36    | 50    | 60   | 75   | 90   | 100  | 120  | 150  | 180  |      |     |
|---|-------------------|-----------------------------|------|------|-------|-------|-------|-------|-------|-------|-------|------|------|------|------|------|------|------|------|-----|
| 电动机/减速器<br>Motor/Gearhead   | 转速 Speed<br>r/min | 50Hz                        | 200  | 166  | 120   | 100   | 83    | 60    | 50    | 41    | 30    | 25   | 20   | 16   | 15   | 12   | 10   | 8    |      |     |
|   |                   | 60Hz                        | 240  | 200  | 144   | 120   | 100   | 72    | 60    | 50    | 36    | 30   | 24   | 20   | 18   | 15   | 12   | 10   |      |     |
| 5RK60GU-AF□<br>5RK60GU-EF□<br>5RK60GU-CF□<br>5RK60GU-HF□<br>5RK60GU-SF□ | 5GU□RC<br>5GU□RT  | 容许力矩<br>Allowance<br>Torque | 50Hz | 2.37 | 2.84  | 3.95  | 4.73  | 5.68  | 7.89  | 9.47  | 10.2  | 14.2 | 17.0 | 20.0 | 20.0 | 20.0 | 20.0 | 20.0 | 20.0 |     |
|   |                   |                             | 60Hz | 1.91 | 2.29  | 3.18  | 3.82  | 4.58  | 6.36  | 7.64  | 8.25  | 11.5 | 13.7 | 17.2 | 20.0 | 20.0 | 20.0 | 20.0 | 20.0 |     |
|   |                   |                             |      | 50Hz | 19.48 | 23.37 | 32.46 | 38.96 | 46.75 | 64.93 | 77.92 | 84.1 | 117  | 140  | 175  | 200  | 200  | 200  | 200  | 200 |
|   |                   |                             |      | 60Hz | 19.48 | 23.37 | 32.46 | 38.96 | 46.75 | 64.93 | 77.92 | 84.1 | 117  | 140  | 175  | 200  | 200  | 200  | 200  | 200 |

## 电机尺寸图 Motor Size Chart

5RK60GU-A□/5GU□RT    5RK60GU-C□/5GU□RT  
5RK60GU-E□/5GU□RT    5RK60GU-H□/5GU□RT



5RK60GU-A□/5GU□RT    5RK60GU-C□/5GU□RT  
5RK60GU-E□/5GU□RT    5RK60GU-H□/5GU□RT



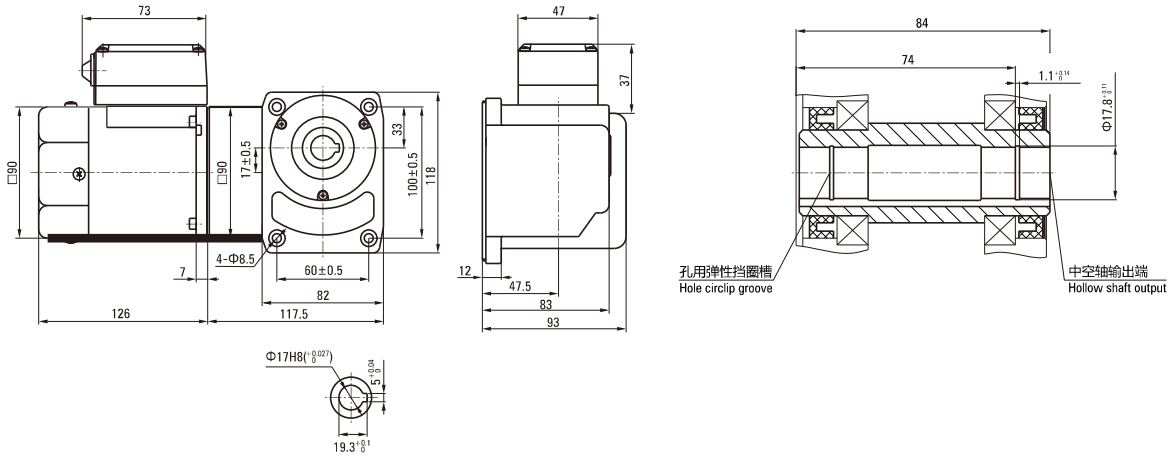
# 蜗轮蜗杆直角 WORM GEAR RIGHT ANGLE

容许力矩单位 Allowance Torque Unit: 上段 Upside (N.m) / 下段 Belowside (kgf.cm)

| 机型Type<br>电动机/减速器<br>Motor/Gearhead                                     | 减速比Gear Ratio               | 7.5  | 9      | 12.5 | 15   | 18   | 25   | 30   | 36   | 50   | 60   | 75   | 90   | 100  | 120  | 150  | 180  |      |      |
|---|-----------------------------|------|--------|------|------|------|------|------|------|------|------|------|------|------|------|------|------|------|------|
|   | 转速Speed<br>r/min            | 50Hz | 200    | 166  | 120  | 100  | 83   | 60   | 50   | 41   | 30   | 25   | 20   | 16   | 15   | 12   | 10   | 8    |      |
|   | 60Hz                        | 240  | 200    | 144  | 120  | 100  | 72   | 60   | 50   | 36   | 30   | 24   | 20   | 18   | 15   | 12   | 10   |      |      |
| 5RK60GU-AF□<br>5RK60GU-EF□<br>5RK60GU-CF□<br>5RK60GU-HF□<br>5RK60GU-SF□ | 容许力矩<br>Allowance<br>Torque | 50Hz | 5GU□RH | 1.39 | 1.67 | 2.32 | 2.78 | 3.34 | 4.64 | 5.57 | 6.68 | 9.28 | 11.1 | 13.9 | 16.7 | 18.6 | 20.0 | 20.0 |      |
|   |                             |      | 5GU□RA | 14.2 | 17.0 | 23.7 | 28.4 | 34.1 | 47.4 | 56.8 | 68.2 | 94.7 | 114  | 142  | 170  | 189  | 200  | 200  |      |
|   |                             | 60Hz | 5GU□RH | 1.12 | 1.35 | 1.87 | 2.25 | 2.69 | 3.74 | 4.49 | 5.39 | 7.49 | 8.98 | 11.2 | 13.5 | 15.0 | 18.0 | 20.0 | 20.0 |
|   |                             |      | 5GU□RA | 11.5 | 13.7 | 19.1 | 22.9 | 27.5 | 38.2 | 45.8 | 55.0 | 76.4 | 91.7 | 115  | 137  | 153  | 183  | 200  | 200  |

## 电机尺寸图 Motor Size Chart

5RK60GU-A□/5GU□RA    5RK60GU-C□/5GU□RA  
5RK60GU-E□/5GU□RA    5RK60GU-H□/5GU□RA



5RK60GU-A□/5GU□RA    5RK60GU-C□/5GU□RA  
5RK60GU-E□/5GU□RA    5RK60GU-H□/5GU□RA

