

种类 Type

电动机 Motor

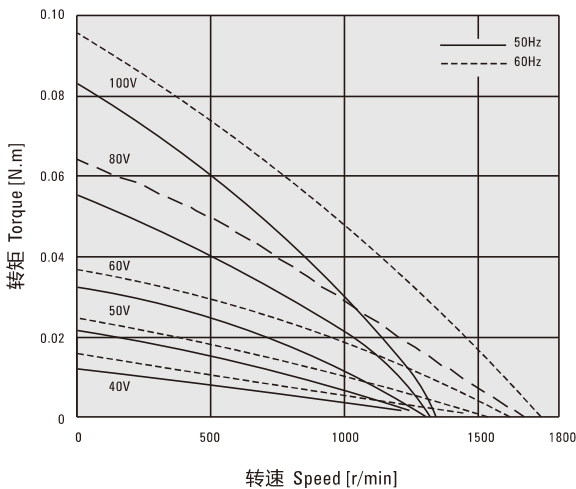
机型 Type	型号Model	
	齿轮轴型 Pinion Shaft	圆轴型 Round Shaft
3W	2TK3GN-A	2TK3A-A
	2TK3GN-C	2TK3A-C
6W	3TK6GN-A	3TK6A-A
	3TK6GN-C	3TK6A-C
10W	4TK10GN-A	4TK10A-A
	4TK10GN-C	4TK10A-C
20W	5TK20GN-A	5TK20A-A
	5TK20GN-C	5TK20A-C

适用电动机输出功率 (齿轮轴) Applicable Motor Output Power (Pinion Shaft Type)	减速器型号 Gearhead Model	减速比 Gear Ratio
3W	2GN□K	3、3.6、5、6、7.5、9、 12.5、15、18、25、30、 36、50、60、75、90、 100、120、150、180、200
	2GN10XK (中间减速器 Decimal Gearhead)	
6W	3GN□K	3、3.6、5、6、7.5、9、 12.5、15、18、25、30、 36、50、60、75、90、 100、120、150、180、200
	3GN10XK (中间减速器 Decimal Gearhead)	
10W	4GN□K	3、3.6、5、6、7.5、9、 12.5、15、18、25、30、 36、50、60、75、90、 100、120、150、180、200
	4GN10XK (中间减速器 Decimal Gearhead)	
20W	5GN□K	3、3.6、5、6、7.5、9、 12.5、15、18、25、30、 36、50、60、75、90、 100、120、150、180、200
	5GN10XK (中间减速器 Decimal Gearhead)	

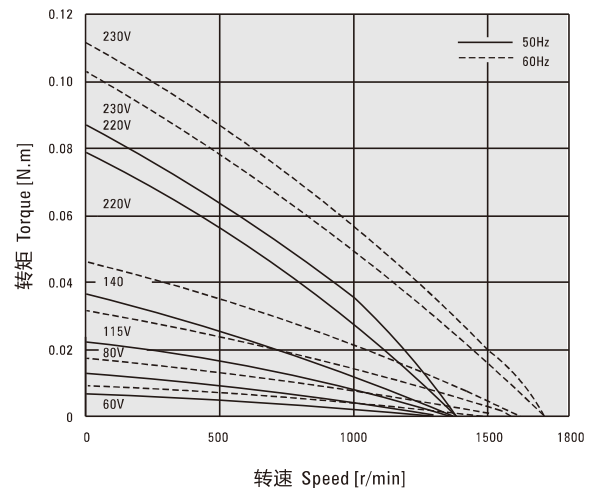
●减速器型号的□中为减速比的数值
Enter the gear ratio in the box (□) within the model name

转速-转矩特性 (参考值) Speed - Torque Characteristics (Reference Values)

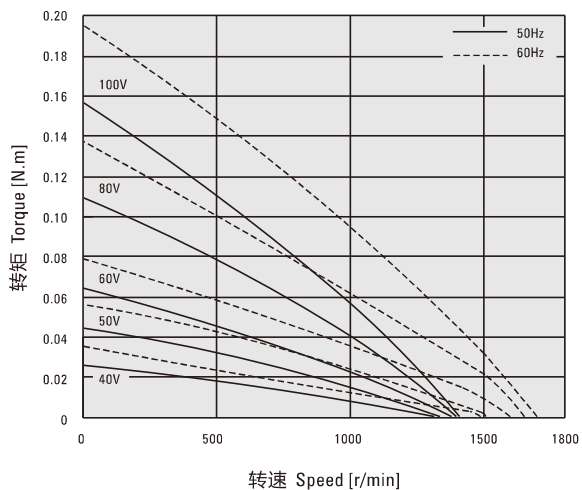
2TK3GN-A、2TK3A-A



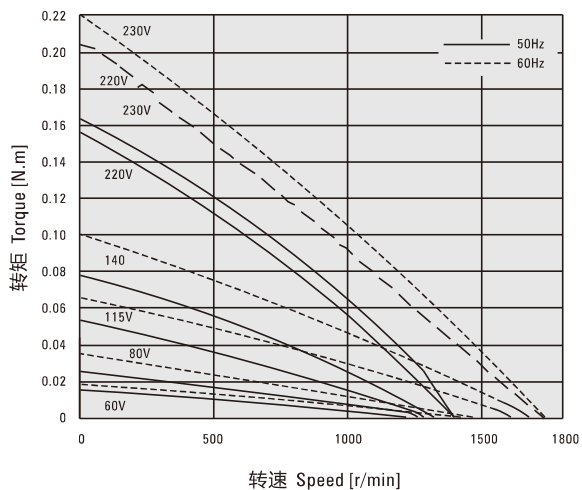
2TK3GN-C、2TK3A-C



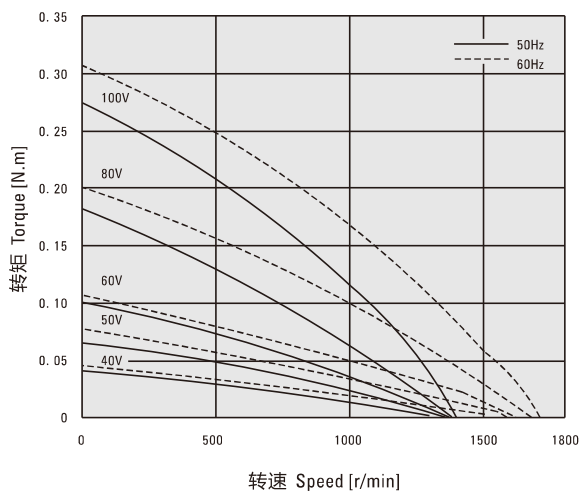
● 3TK6GN-A、3TK6A-A



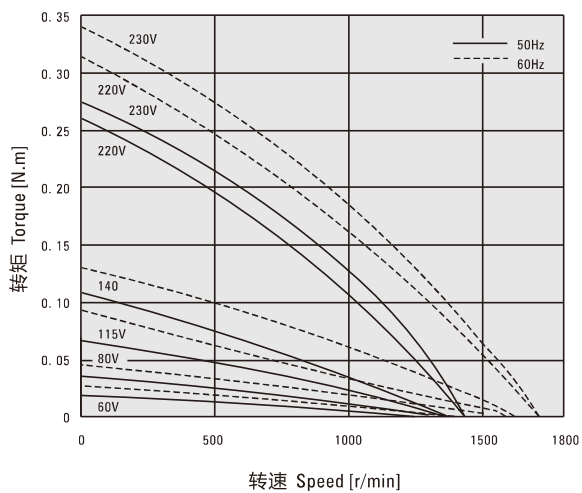
● 3TK6GN-C、3TK6A-C



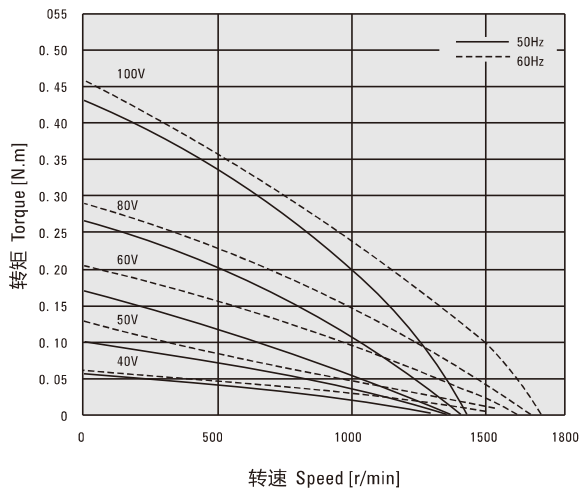
● 4TK10GN-A、4TK10A-A



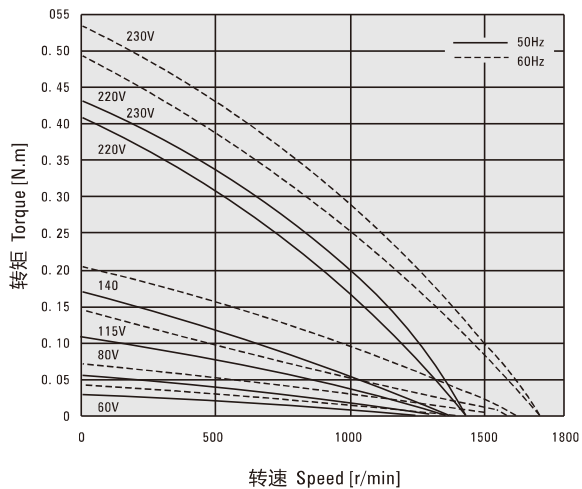
● 4TK10GN-C、4TK10A-C



● 5TK20GN-A、5TK20A-A



● 5TK20GN-C、5TK20A-C



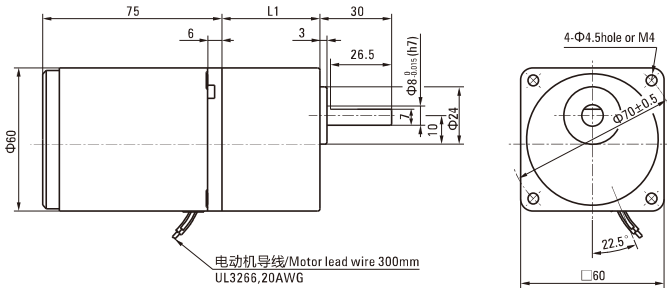
外形图 (单位 mm) Dimensions(Unit mm)

减速器附有安装用螺丝 Mounting screws are included with gearhead.

● 3W

● 电动机/减速器 Motor/Gearhead

重量 Weight : 电动机 Motor : 0.75kg 减速器 Gearhead : 0.4kg

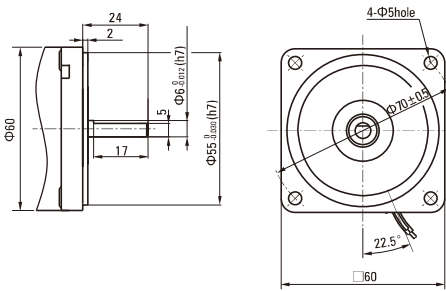


● 圆轴型的转轴部分 Shaft Section Of Round Shaft Type

2TK3A-A 2TK3A-C

除重量及轴部外电动机外形与齿轮轴型相同。

Excluding weight and the shaft section motor shape are the same as those of the pinion shaft type.



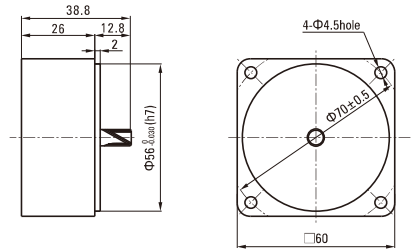
电动机型号 Motor Model	减速器型号 Gearhead Model	减速比 Gear Ratio	L1
2TK3GN-A 2TK3GN-C	2GN□K	3~18	32
		25~200	41.5

● 减速器型号的□中为减速比的数值
Enter the gear ratio in the box (□) within the model name

● 中间减速器 Decimal Gearhead

可安装2TK3GN型 Can be connected to 2TK3GN type
2GN10XK

重量 Weight : 0.24kg



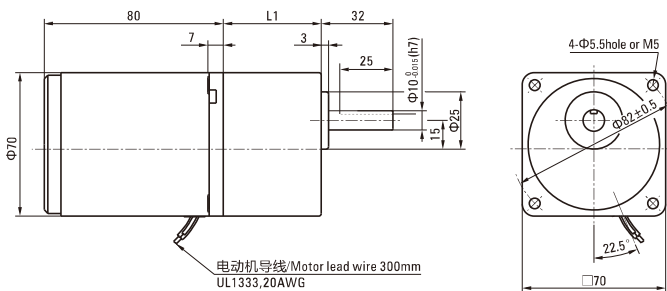
外形图 (单位 mm) Dimensions(Unit mm)

减速器附有安装用螺丝 Mounting screws are included with gearhead.

● 6W

● 电动机/减速器 Motor/Gearhead

重量 Weight : 电动机 Motor : 1.1kg 减速器 Gearhead : 0.5kg

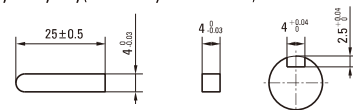


电动机型号 Motor Model	减速器型号 Gearhead Model	减速比 Gear Ratio	L1
3TK6GN-A 3TK6GN-C	3GN□K	3~18	32
		25~200	42

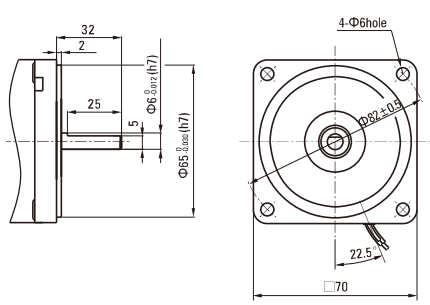
● 减速器型号的□中为减速比的数值
Enter the gear ratio in the box (□) within the model name

● 键·键槽 (减速器附件)

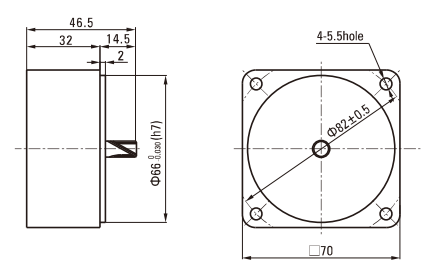
Key · keyway (Accessory of Gearhead)



● **圆轴型的转轴部分** Shaft Section Of Round Shaft Type
 3TK6A-A 3TK6A-C
 除重量及轴部外电动机外形与齿轮轴型相同。
 Excluding weight and the shaft section motor shape are the same as those of the pinion shaft type.



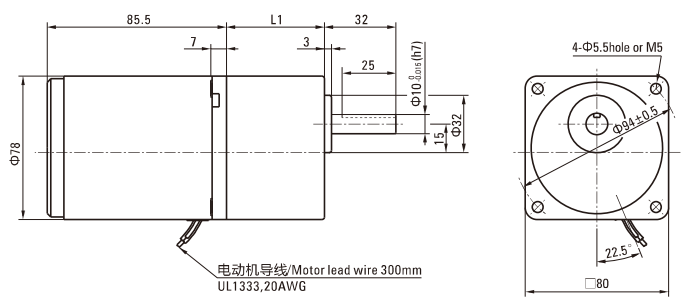
● **中间减速器** Decimal Gearhead
 可安装3TK6GN型 Can be connected to 3TK6GN type
 3GN10XK
 重量 Weight : 0.31kg



■ **外形图 (单位 mm) Dimensions(Unit mm)**

减速器附有安装用螺丝 Mounting screws are included with gearhead.

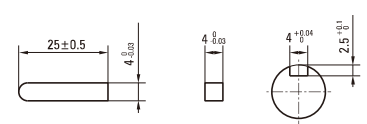
- 10W
- 电动机/减速器 Motor/Gearhead
 重量 Weight : 电动机 Motor : 1.6kg 减速器 Gearhead : 0.8kg



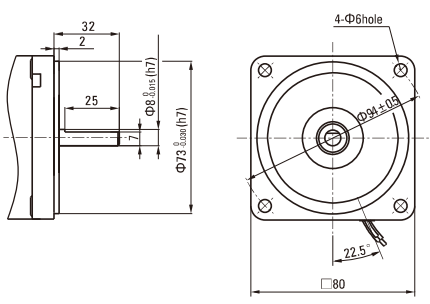
电动机型号 Motor Model	减速器型号 Gearhead Model	减速比 Gear Ratio	L1
4TK10GN-A 4TK10GN-C	4GN□K	3~18	32
		25~200	43.5

● 减速器型号的□中为减速比的数值
 Enter the gear ratio in the box (□) within the model name

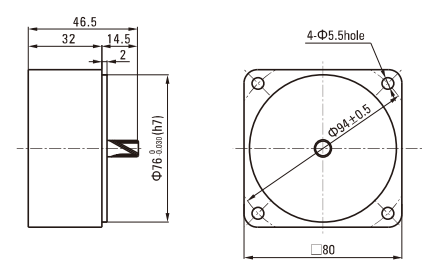
● 键·键槽 (减速器附件)
 Key · keyway(Accessory of Gearhead)



● **圆轴型的转轴部分** Shaft Section Of Round Shaft Type
 4TK10A-A 4TK10A-C
 除重量及轴部外电动机外形与齿轮轴型相同。
 Excluding weight and the shaft section motor shape are the same as those of the pinion shaft type.



● **中间减速器** Decimal Gearhead
 可安装4TK10GN型 Can be connected to 4TK10GN type
 4GN10XK
 重量 Weight : 0.41kg



外形图 (单位 mm) Dimensions(Unit mm)

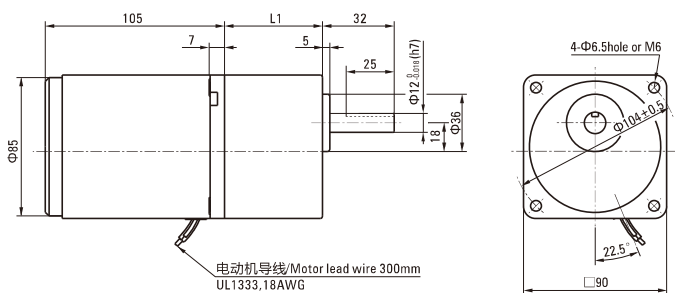
减速器附有安装用螺丝 Mounting screws are included with gearhead.

20W

电动机/减速器 Motor/Gearhead

重量 Weight : 电动机 Motor : 2.4kg

减速器 Gearhead : 1.35kg

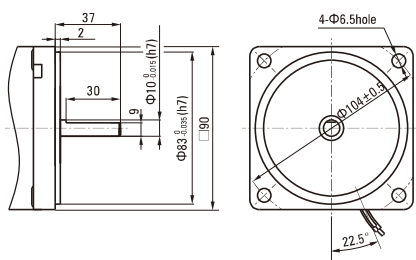


圆轴型的转轴部分 Shaft Section Of Round Shaft Type

5TK20A-A 5TK20A-C

除重量及轴部外电动机外形与齿轮轴型相同。

Excluding weight and the shaft section motor shape are the same as those of the pinion shaft type.

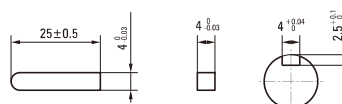


电动机型号 Motor Model	减速器型号 Gearhead Model	减速比 Gear Ratio	L1
5TK20GN-A 5TK20GN-C	5GN□K	3~18	42
		25~200	60

● 减速器型号的□中为减速比的数值
Enter the gear ratio in the box (□) within the model name

键·键槽 (减速器附件)

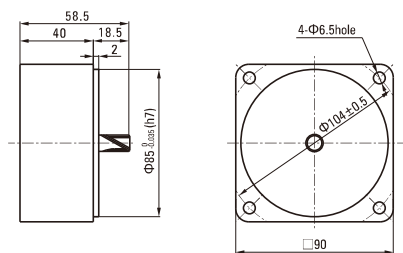
Key · Keyway (Accessory Of Gearhead)



中间减速器 Decimal Gearhead

可安装5TK20GN型 Can be connected to 5TK20GN type
5GN10XK

重量 Weight : 0.6kg



电容器外形尺寸 Formal Dimension Of Capacitor

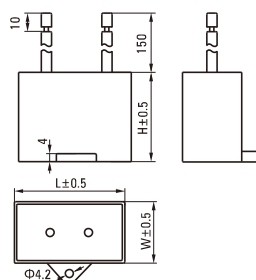
型号 Model		电容器型号 Capacitor Model	L	W	H
齿轮轴型 Pinion Shaft	圆轴型 Round Shaft				
2TK3GN-A	2TK3A-A	ZD70CFAUL	47	24	37
		ZD60CFAUL	48	23	32
3TK6GN-A	3TK6A-A	ZD80CFAUL	48	26.5	38
		ZD70CFAUL	47	24	37
4TK10GN-A	4TK10A-A	ZD100CFAUL	58	26	38
		ZD80CFAUL	48	26.5	38
5TK20GN-A	5TK20A-A	ZD150CFAUL	58	32	43
		ZD120CFAUL	58	30	40
2TK3GN-C	2TK3A-C	ZD15BFAUL	36	12.5	24
		ZD12BFAUL	36	12	22
3TK6GN-C	3TK6A-C	ZD20BFAUL	36	15	25
		ZD15BFAUL	36	12.5	24
4TK10GN-C	4TK10A-C	ZD25BFAUL	38	17	28
		ZD20BFAUL	36	15	25
5TK20GN-C	5TK20A-C	ZD35BFAUL	38	19.5	31
		ZD30BFAUL	38	18.5	29

● 常规电容器出线为引线,也可根据客户要求配置插片式187#

Note: Conventional capacitor is a lead wire type. Inserted 187# is optional

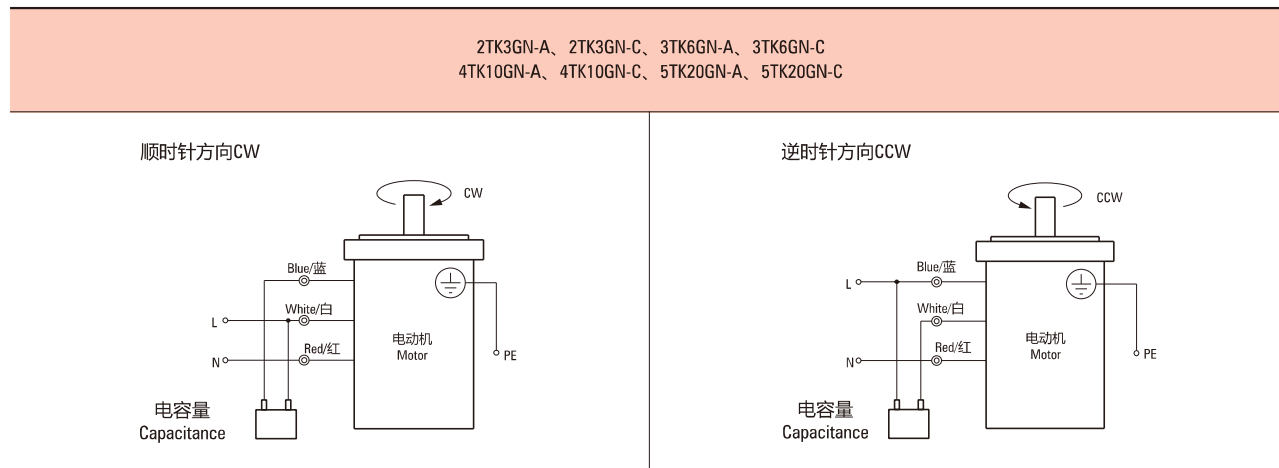
● 电动机型号的□中为表示带端子箱型的记号(T)

Enter the code that represents the terminal box type (T) in the box (□) within the model name



■ 连接图 Wiring Diagram

- 运转方向指从电动机轴看来的方向。CW表示顺时针方向，CCW表示逆时针方向。
The direction of motor rotation is as viewed from the shaft end of motor. CW represents the clockwise direction, while CCW represents the counterclockwise direction.
- 表中所记品名为齿轮轴型，圆轴型亦同。
Name indicated in the list is pinion shaft type, also valid for the equivalent round shaft type.
- 品名的□中为附属电容器种类的J、U或E记号。
Specify the type of the capacitor to be included by entering J or E in the box (□) within the model name.



请注意 Note:

单相电动机运转方向的转换应在电动机停止后进行。

Change the direction of single-phase motor rotation only after bring the motor to a stop.

若在电动机运转时转换运转方向，可能发生无法转换运转方向或须费时较久的情况。

If an attempt is made to change the direction of rotation while the motor is rotating, motor may ignore reversing command or change its direction of rotation after some delay.