

调速电动机 SPEED ADJUSTABLE MOTOR

■ 6W □ 60mm



规格 Specs 连续额定 Cont. Rated

| 型号Model · 类型 Type 导线型 Lead Wire Type | | 最大 输出功率 Output power W | 电压 Voltage V | 频率 Frequency Hz | 调速范围 Speed Control Range r/min | 容许转矩 Allowance Torque | | 启动转矩 Starting Torque mN.m | 电流 Current A | 电容器容量 Capacitor μF |
|---|--------------------|------------------------------------|--------------------|-----------------------|--|--------------------------|-----------------|------------------------------------|--------------------|--------------------------|
| 齿轮轴型 Pinion Shaft | 圆轴型 Round Shaft | | | | | 1200r/min mN.m | 90r/min mN.m | | | |
| 2IK6RGN-A | 2IK6RA-A | 6 | 1ph 100 | 50 | 90~1350 | 50 | 30 | 35 | 0.240 | 3.5 |
| | | | | 60 | 90~1650 | 50 | 29 | 35 | 0.250 | |
| 2IK6RGN-E | 2IK6RA-E | 6 | 1ph 110 | 60 | 90~1650 | 50 | 29 | 30 | 0.160 | 2.0 |
| | | | 1ph 120 | | | | | | 0.180 | |
| 2IK6RGN-C | 2IK6RA-C | 6 | 1ph 220 | 50 | 90~1350 | 55 | 29 | 35 | 0.130 | 0.8 |
| | | | 1ph 230 | | | | | | 0.110 | |
| 2IK6RGN-H | 2IK6RA-H | 6 | 1ph 220 | 60 | 90~1650 | 55 | 29 | 35 | 0.140 | 0.8 |
| | | | 1ph 230 | | | | | | 0.120 | |

●各种安全规格以电动机铭牌上的型号取得认证。

When the motor is approved under various safety standards, the model name on the nameplate is the approved model name.

●注：“-A”型号中电压为110V时，配置电容器容量以实际铭牌为准。

Note：“-A” it means the voltage 110V, the assembly capacitor value it is according to the label.

种类 Type

● 电动机 Motor

| 机型 Type | 型号Model | |
|-----------------------------|----------------------|--------------------|
| | 齿轮轴型 Pinion Shaft | 圆轴型 Round Shaft |
| 导线型 Lead Wire Type | 2IK6RGN-A | 2IK6RA-A |
| | 2IK6RGN-E | 2IK6RA-E |
| | 2IK6RGN-C | 2IK6RA-C |
| | 2IK6RGN-H | 2IK6RA-H |

● 平行轴减速器（另售）Parallel Shaft Gearhead (Sold Separately)

| 减速器种类 Gearhead Type | 减速器型号 Gearhead Model | 减速比 Gear Ratio |
|-------------------------------------|----------------------------------|---|
| 长寿命●低噪音 Long Life ● Low Noise | 2GN□K | 3、3.6、5、6、7.5、9、 12.5、15、18、25、30、 36、50、60、75、90、 100、120、150、180、200 |
| | 2GN10XK (中间减速器 Decimal Gearhead) | |

●减速器型号的□中为减速比的数值

Enter the gear ratio in the box (□) within the model name

■ 装有减速器时的容许转矩 Gear Motor-Torque Table

- 减速器另售·中间减速器另售。
Gearhead and mid-gearbox can be sold separately.
- 减速品型号的□中为减速比的数值。
Enter the gear ratio in the box (□) within the model name.
- □色表示与电动机同一方向运转，其他则为相反方向。
The colored background □ indicates the same rotating direction of the motor while the rotating direction of others are opposite.
- 转速是以电动机的同步转速（50Hz：1500r/min、60Hz：1800r/min）为基准除以减速比而算出来的数值。实际转速将随负载大小变化所示数值减少2%~20%左右。
The speed is calculated by dividing the motor's synchronous speed (50Hz：1500r/min、60Hz：1800r/min) by the gear ratio. The actual speed is 2%~20% less than the displayed value, depending on the size of the load.
- 希望以大于下表的减速比进行进一步减速时，可在电动机与减速机之间安装减速比为10的中间减速器。这时的容许转矩为3N·m。
To reduce the speed beyond the gear ratio in the table, attach a decimal gearhead (gear ratio:10) between the gearhead and motor. In that case, the permissible torque is 3N·m.

■ 容许力矩单位 Allowance Torque Unit：上段 Upside (N.m) /下段 Belowside (kgf.cm)

| 类型 Type 电动机/减速机 Motor/Gearhead | 减速比 Gear Ratio | | 3 | 3.6 | 5 | 6 | 7.5 | 9 | 12.5 | 15 | 18 | 25 | 30 | 36 | 50 | 60 | 75 | 90 | 100 | 120 | 150 | 180 | 200 |
|--|-------------------|------|------|------|------|------|------|------|------|------|------|------|------|------|------|------|------|------|------|------|-----|-----|-----|
| | 转速 Speed r/min | 50Hz | 500 | 417 | 300 | 250 | 200 | 166 | 120 | 100 | 83 | 60 | 50 | 41 | 30 | 25 | 20 | 16 | 15 | 12.5 | 10 | 8.3 | 7.5 |
| 2IK6RGN-A 2IK6RGN-E 2IK6RGN-C 2IK6RGN-H | 2GN□K | 50Hz | 0.12 | 0.14 | 0.19 | 0.23 | 0.29 | 0.35 | 0.49 | 0.58 | 0.70 | 0.88 | 1.1 | 1.3 | 1.6 | 1.9 | 2.4 | 2.9 | 3 | 3 | 3 | 3 | 3 |
| | | 60Hz | 1.22 | 1.43 | 1.94 | 2.35 | 2.96 | 3.57 | 5.0 | 5.92 | 7.14 | 8.98 | 11.2 | 13.3 | 16.3 | 19.4 | 24.5 | 29.6 | 30 | 30 | 30 | 30 | 30 |
| | 2GN□K | 50Hz | 0.10 | 0.12 | 0.16 | 0.19 | 0.24 | 0.29 | 0.41 | 0.49 | 0.58 | 0.73 | 0.88 | 1.1 | 1.3 | 1.6 | 2.0 | 2.4 | 2.6 | 3 | 3 | 3 | 3 |
| | | 60Hz | 1.02 | 1.22 | 1.63 | 1.94 | 2.45 | 2.96 | 4.18 | 5.0 | 5.92 | 7.45 | 8.98 | 11.2 | 13.3 | 16.3 | 20.4 | 24.5 | 2.65 | 30 | 30 | 30 | 30 |

■ 容许悬挂负载·容许轴向负载 To Allow The Hoisting Of The Load Allow Axial Load

电动机 (圆轴型) →P272页

Motor(Round Shaft) →P272

减速机→P272页

Gearhead→P272

■ 减速机的容许负载惯性惯量 J Permissible Load Inertia J For Gearhead

→P272页→P272

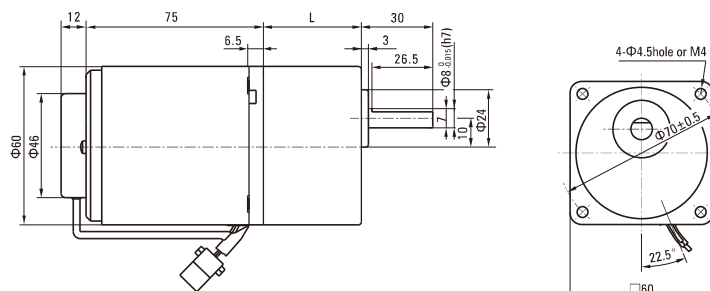
■ 外形图 (单位 mm) Dimensions(Unit mm)

减速机附有安装用螺丝 Mounting screws are included with gearhead.

● 导线型 Lead Wiring Type

重量 Weight：电动机 Motor：1.1kg

减速机 Gearhead：0.5kg

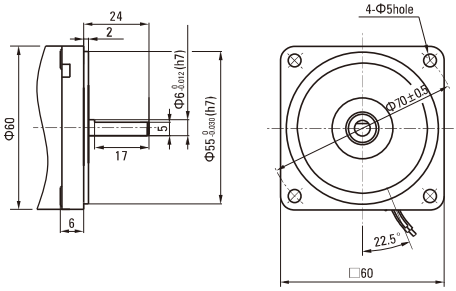


| 电动机型号 Motor Model | 减速器型号 Gearhead Model | 减速比 Gear Ratio | L1 |
|--|-------------------------|-------------------|------|
| 2IK6RGN-A 2IK6RGN-E 2IK6RGN-C 2IK6RGN-H | 2GN□K | 3~18 | 32 |
| | | 25~200 | 41.5 |

- 减速器型号的□中为减速比的数值
Enter the gear ratio in the box (□) within the model name

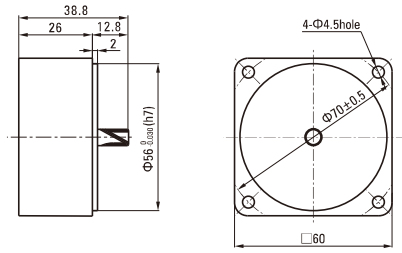
● 圆轴型的转轴部分 Shaft Section Of Round Shaft Type

除重量及轴部外电动机外形与齿轮轴型相同。
Excluding weight and the shaft section motor shape are the same as those of the pinion shaft type.



● 中间减速器 Decimal Gearhead

可安装在GN齿轮轴型上 Can be connected to GN pinion shaft type
电动机外形与齿轮轴型相同
2GN10XK
重量 Weight : 0.24kg



■ 连接图 Wiring Diagram

