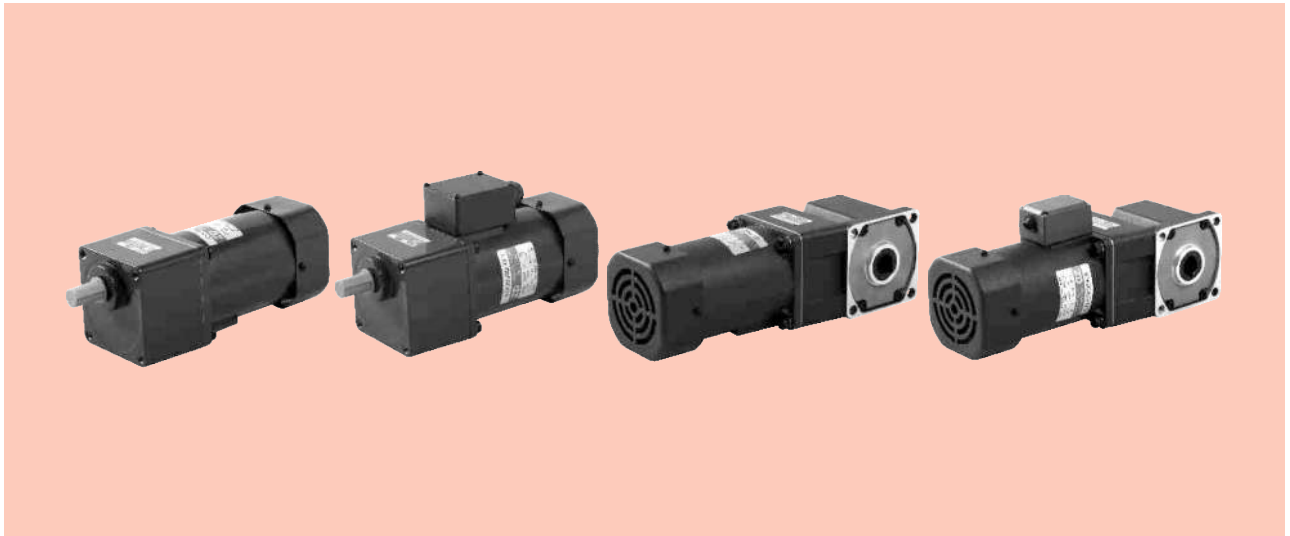


感应电动机 INDUCTION MOTORS

■ 200W □ 104mm



规格 Specs 连续额定 Continuous Rating

| 型号 Model · 类型 Type 上段:齿轮轴 Upper:Pinion Shaft 下段()内:圆轴 Below:Round Shaft | | 输出功率 Output power W | 电压 Voltage V | 频率 Frequency Hz | 电流 Current A | 启动转矩 Starting Torque mN.m | 额定转矩 Rated Torque mN.m | 额定转速 Rated Speed r/min | 电容器容量 Capacitor μF |
|---|--|---------------------------|--------------------|-----------------------|--------------------|---------------------------------|------------------------------|------------------------------|--------------------------|
| 导线型 Lead Wire Type 外形图Dimensions① | 带端子箱型 Terminal Box Type 外形图Dimensions② | | | | | | | | |
| 6IK200GU-AF (6IK200A-AF) | 6IK200GU-AFT (6IK200A-AFT) | 200 | 1ph 100 | 50 | 3.2 | 900 | 1520 | 1250 | 45.0 |
| | | | | 60 | 3.5 | | 1230 | 1550 | |
| 6IK200GU-EF (6IK200A-EF) | 6IK200GU-EFT (6IK200A-EFT) | 200 | 1ph 110 | 60 | 2.75 | 850 | 1230 | 1550 | 35.0 |
| | | | 1ph 120 | | 2.65 | | | | |
| 6IK200GU-CF (6IK200A-CF) | 6IK200GU-CFT (6IK200A-CFT) | 200 | 1ph 220 | 50 | 1.40 | 1000 | 1520 | 1250 | 10.0 |
| | | | 1ph 230 | | | | | | |
| 6IK200GU-HF (6IK200A-HF) | 6IK200GU-HFT (6IK200A-HFT) | 200 | 1ph 220 | 60 | 1.40 | 900 | 1230 | 1550 | |
| | | | 1ph 230 | | | | | | |
| 6IK200GU-SF (6IK200A-SF) | 6IK200GU-SFT (6IK200A-SFT) | 200 | 3ph 220 | 50 | 1.20 | 3400 | 1520 | 1250 | - |
| | | | | 60 | 1.0 | | | | |

●各种安全规格以电动机铭牌上的型号名取得认证。

When the motor is approved under various safety standards, the model name on the nameplate is the approved model name.

●注：“-A”型号中电压为110V时，配置电容器容量以实际铭牌为准。

Note:“-A” it means the voltage 110v,the assembly capacitor vaule it is according the labe.

种类 Type

●电动机 Motor

| 机型 Type | 型号 Model | |
|----------------------------|----------------------|--------------------|
| | 齿轮轴型 Pinion Shaft | 圆轴型 Round Shaft |
| 导线型 Lead Wire Type | 6IK200GU-AF | 6IK200A-AF |
| | 6IK200GU-EF | 6IK200A-EF |
| | 6IK200GU-CF | 6IK200A-CF |
| | 6IK200GU-HF | 6IK200A-HF |
| | 6IK200GU-SF | 6IK200A-SF |
| 带端子箱型 Terminal Box Type | 6IK200GU-AFT | 6IK200A-AFT |
| | 6IK200GU-EFT | 6IK200A-EFT |
| | 6IK200GU-CFT | 6IK200A-CFT |
| | 6IK200GU-HFT | 6IK200A-HFT |
| | 6IK200GU-SFT | 6IK200A-SFT |

●平行轴减速器（另售） Parallel Shaft Gearhead (Sold Separately)

| 减速器种类 Gearhead Type | 减速器型号 Gearhead Model | 减速比 Gear Ratio |
|----------------------------------|-------------------------|---|
| 长寿命●低噪音 Long Life ● Low Noise | 6GU□K | 3、3.6、5、6、7.5、9、 12.5、15、18、25、30、 36、50、60、75、90、 100、120、150、180、200 |

●减速器型号的□中为减速比的数值

Enter the gear ratio in the box (□) within the model name

■ 装有减速器时的容许转矩 Gear Motor-Torque Table

- 减速器另售·中间减速器另售。电动机型号的□中为表示带端子箱型的记号(T)。
Gearhead and mid-gearbox can be sold separately. Enter the code that represents the terminal box type (T) in the box (□) within the model name.
- 减速品型号的□中为减速比的数值。
Enter the gear ratio in the box(□) within the model name.
- 色表示与电动机同一方向运转，其他则为相反方向。
The colored background □ indicates the same rotating direction of the motor while the rotating direction of others are opposite.
- 转速是以电动机的同步转速(50Hz:1500r/min、60Hz:1800r/min)为基准除以减速比而算出来的数值。实际转速将随负载大小变化所示数值减少2%~20%左右。
The speed is calculated by dividing the motor's synchronous speed(50Hz:1500r/min、60Hz:1800r/min) by the gear ratio. The actual speed is 2%~20% less than the displayed value, depending on the size of the load.
- 希望以大于下表的减速比进行进一步减速时，可在电动机与减速机之间安装减速比为10的中间减速机。这时的容许转矩为20N·m。
To reduce the speed beyond the gear ratio in the table, attach a decimal gearhead(gear ratio:10)between the gearhead and motor. In that case, the permissible torque is 20N·m.

■ 容许力矩单位 Allowance Torque Unit : 上段 Upside (N.m) /下段 Belowside (kgf.cm)

| 类型 Type 电动机/减速机 Motor/Gearhead | 减速比 Gear Ratio | | 3 | 3.6 | 5 | 6 | 7.5 | 9 | 12.5 | 15 | 18 | 25 | 30 | 36 | 50 | 60 | 75 | 90 | 100 | 120 | 150 | 180 | 200 | |
|--|-------------------|------|------|------|------|------|------|------|------|------|------|------|------|------|-----|-----|-----|-----|-----|------|-----|-----|-----|-----|
| | 转速 Speed r/min | 50Hz | 500 | 417 | 300 | 250 | 200 | 166 | 120 | 100 | 83 | 60 | 50 | 42 | 30 | 25 | 20 | 16 | 15 | 12.5 | 10 | 8.3 | 7.5 | |
| 6IK200GU-AF□ 6IK200GU-EF□ 6IK200GU-CF□ 6IK200GU-HF□ 6IK200GU-SF□ | 6GU□K | 50Hz | 600 | 500 | 360 | 300 | 240 | 200 | 144 | 120 | 100 | 72 | 60 | 50 | 36 | 30 | 24 | 20 | 18 | 15 | 12 | 10 | 9 | |
| | | | 600 | 500 | 360 | 300 | 240 | 200 | 144 | 120 | 100 | 72 | 60 | 50 | 36 | 30 | 24 | 20 | 18 | 15 | 12 | 10 | 9 | |
| | | 60Hz | 3.71 | 4.46 | 6.19 | 7.43 | 9.28 | 11.1 | 13.9 | 16.7 | 20.1 | 25.2 | 30.3 | 36.3 | 40 | 40 | 40 | 40 | 40 | 40 | 40 | 40 | 40 | 40 |
| | | | 37.9 | 45.5 | 63.1 | 75.8 | 94.7 | 114 | 142 | 171 | 205 | 257 | 309 | 370 | 400 | 400 | 400 | 400 | 400 | 400 | 400 | 400 | 400 | 400 |
| | | | 2.99 | 3.59 | 4.99 | 5.99 | 7.49 | 8.98 | 11.2 | 13.5 | 16.2 | 20.3 | 24.4 | 29.3 | 40 | 40 | 40 | 40 | 40 | 40 | 40 | 40 | 40 | |
| | | | 30.6 | 36.7 | 50.9 | 61.1 | 76.4 | 91.7 | 115 | 138 | 165 | 207 | 249 | 299 | 400 | 400 | 400 | 400 | 400 | 400 | 400 | 400 | 400 | |

■ 容许悬挂负载·容许轴向负载 To Allow The Hoisting Of The Load Allow Axial Load

电动机(圆轴型)→272页

Motor(Round Shaft)→P272

减速机→272页

Gearhead→P272

■ 减速机的容许负载惯性惯量 J Permissible Load Inertia J For Gearhead

→272页→P272

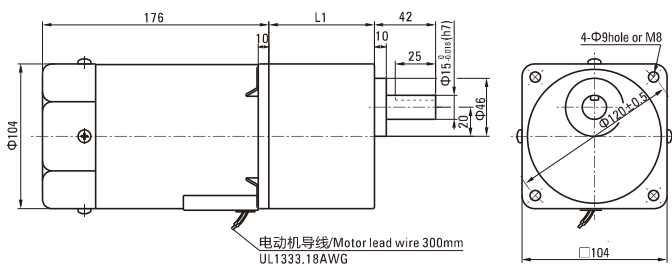
■ 外形图(单位 mm) Dimensions(Unit mm)

减速机附有安装用螺丝 Mounting screws are included with gearhead.

● 导线型 Lead Wiring Type ①

重量 Weight : 电动机 Motor : 5.0kg

减速机 Gearhead : 2.1kg



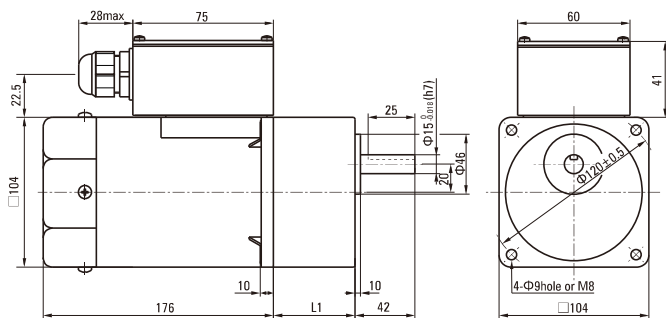
| 电动机型号 Motor Model | 减速机型号 Gearhead Model | 减速比 Gear Ratio | L1 |
|---|-------------------------|-------------------|----|
| 6IK200GU-AF 6IK200GU-EF 6IK200GU-CF 6IK200GU-HF 6IK200GU-SF | 6GU□K | 3~200 | 72 |

- 减速机型号的□中为减速比的数值
Enter the gear ratio in the box (□) within the model name

● 带端子箱型 Terminal Box Type ②

重量 Weight : 电动机 Motor : 5.15kg

减速器 Gearhead : 2.1kg

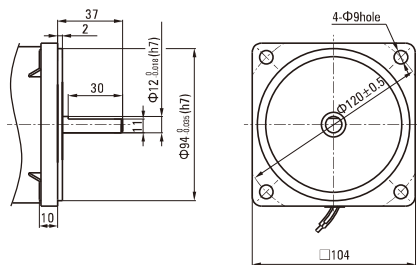


● 适用电缆直径为 Use cable with a diameter of $\Phi 6 \sim \Phi 12\text{mm}$

● 圆轴型的转轴部分 Shaft Section Of Round Shaft Type

除重量及轴部外电动机外形与齿轮轴型相同。

Excluding weight and the shaft section motor shape are the same as those of the pinion shaft type.



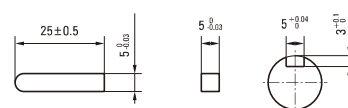
| 电动机型号 Motor Model | 减速器型号 Gearhead Model | 减速比 Gear Ratio | L1 |
|--|-------------------------|-------------------|----|
| 6IK200GU-AFT 6IK200GU-EFT 6IK200GU-CFT 6IK200GU-HFT 6IK200GU-SFT | 6GU□K | 3~200 | 72 |

● 减速器型号的□中为减速比的数值

Enter the gear ratio in the box (□) within the model name

● 键·键槽 (减速器附件)

Key · Keyway (Accessory Of Gearhead)



■ 电容器外形尺寸 Formal Dimension Of Capacitor

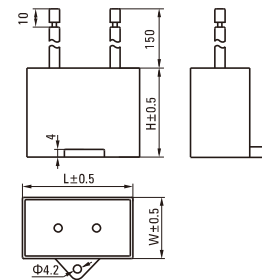
| 型号 Model | | 电容器型号 Capacitor Model | L | W | H |
|----------------------|--------------------|--------------------------|----|----|----|
| 齿轮轴型 Pinion Shaft | 圆轴型 Round Shaft | | | | |
| 6IK200GU-AF | 6IK200A-AF | ZD450CFAUL | 70 | 38 | 52 |
| 6IK200GU-EF | 6IK200A-EF | ZD350CFAUL | 58 | 30 | 40 |
| 6IK200GU-CF | 6IK200A-CF | ZD100BFAUL | 58 | 26 | 38 |

● 常规电容器出线为引线,也可根据客户要求配置插片式187#

Note: Conventional capacitor is a lead wire type. Inserted 187# is optional

● 电动机型号的□中为表示带端子箱型的记号(T)

Enter the code that represents the terminal box type (T) in the box (□) within the model name



连接图 Wiring Diagram

- 运转方向指从电动机轴看来的方向。CW表示顺时针方向，CCW表示逆时针方向。
The direction of motor rotation is as viewed from the shaft end of motor. CW represents the clockwise direction, while CCW represents the counterclockwise direction.
- 表中所记品名为齿轮轴型，圆轴型亦同。
Name indicated in the list is pinion shaft type, also valid for the equivalent round shaft type.

| 导线型 Lead Wire Type | | |
|---|--|--|
| 6IK200GU-AF、6IK200GU-EF、6IK200GU-HF、6IK200GU-CF | | 6IK200GU-SF |
| <p>顺时针方向CW</p> <p>电容器 Capacitance</p> | <p>逆时针方向CCW</p> <p>电容器 Capacitance</p> | <p>顺时针方向CW</p> <p>电动机 Motor</p> <p>逆时针方向CCW 若对换R、S、T中任意二条，电动机作逆时针方向运转 To change the rotation direction change any two connections among R, S and T</p> |
| 带端子箱型 Terminal Box Type | | |
| 6IK200GU-AFT、6IK200GU-EFT、6IK200GU-HFT、6IK200GU-CFT | | 6IK200GU-SFT |
| <p>顺时针方向CW</p> <p>电容器 Capacitance</p> | <p>逆时针方向CCW</p> <p>电容器 Capacitance</p> | <p>顺时针方向CW</p> <p>电动机 Motor</p> <p>逆时针方向CCW 若对换U、V、W中任意二条，电动机作逆时针方向运转 To change the rotation direction change any two connections among U, V and W</p> |

请注意 Note:

单相电动机运转方向的转换应在电动机停止后进行。

Change the direction of single-phase motor rotation only after bring the motor to a stop.

若在电动机运转时转换运转方向，可能发生无法转换运转方向或须费时较久的情况。

If an attempt is made to change the direction of rotation while the motor is rotating, motor may ignore reversing command or change its direction of rotation after some delay.