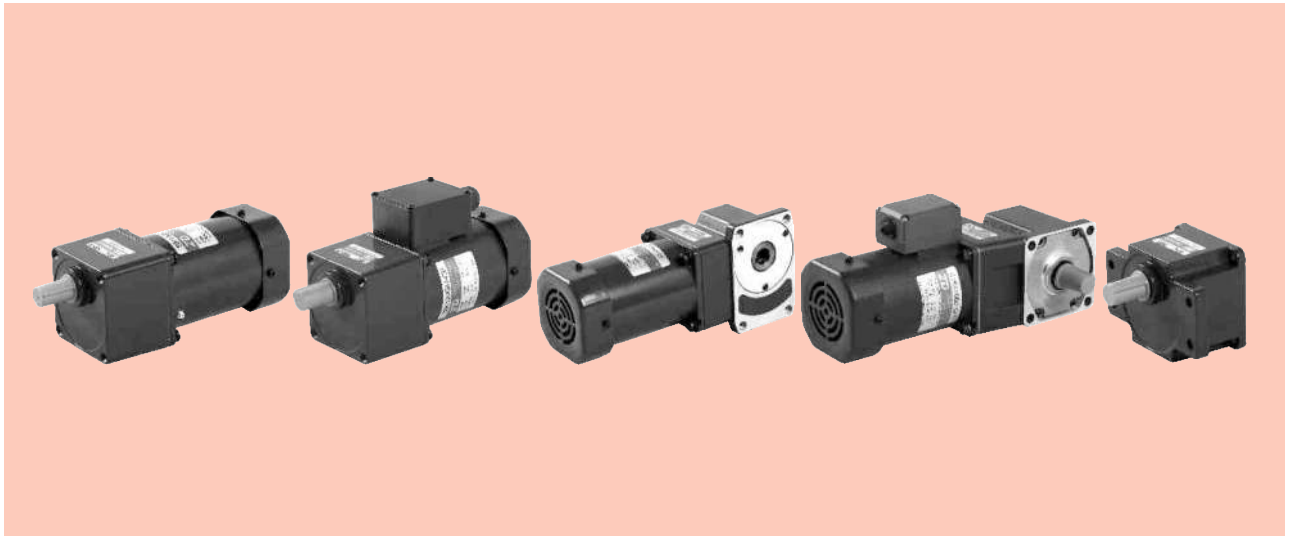


感应电动机 INDUCTION MOTORS

■ 120W □ 90mm



规格 Specs 连续额定 Continuous Rating

| 型号 Model · 类型 Type 上段:齿轮轴 Upper:Pinion Shaft 下段()内:圆轴 Below:Round Shaft | | 输出功率 Output power W | 电压 Voltage V | 频率 Frequency Hz | 电流 Current A | 启动转矩 Starting Torque mN.m | 额定转矩 Rated Torque mN.m | 额定转速 Rated Speed r/min | 电容器容量 Capacitor μF |
|---|--|---------------------------|--------------------|-----------------------|--------------------|---------------------------------|------------------------------|------------------------------|--------------------------|
| 导线型 Lead Wire Type 外形图Dimensions① | 带端子箱型 Terminal Box Type 外形图Dimensions② | | | | | | | | |
| 5IK120GU-AF (5IK120A-AF) | 5IK120GU-AFT (5IK120A-AFT) | 120 | 1ph 100 | 50 | 2.1 | 600 | 930 | 1250 | 30.0 |
| | | | | 60 | 2.5 | | 750 | 1550 | |
| 5IK120GU-EF (5IK120A-EF) | 5IK120GU-EFT (5IK120A-EFT) | 120 | 1ph 110 | 60 | 1.65 | 600 | 750 | 1550 | 25.0 |
| | | | 1ph 120 | | 1.80 | | | | |
| 5IK120GU-CF (5IK120A-CF) | 5IK120GU-CFT (5IK120A-CFT) | 120 | 1ph 220 | 50 | 1.0 | 650 | 930 | 1250 | 7.0 |
| | | | 1ph 230 | | 0.95 | | | | |
| 5IK120GU-HF (5IK120A-HF) | 5IK120GU-HFT (5IK120A-HFT) | 120 | 1ph 220 | 60 | 1.0 | 600 | 750 | 1550 | - |
| | | | 1ph 230 | | 0.95 | | | | |
| 5IK120GU-SF (5IK120A-SF) | 5IK120GU-SFT (5IK120A-SFT) | 120 | 3ph 220 | 50 | 0.70 | 1850 | 930 | 1250 | - |
| | | | | 60 | 0.60 | | | | |

●各种安全规格以电动机铭牌上的型号名取得认证。

When the motor is approved under various safety standards, the model name on the nameplate is the approved model name.

●注：“-A”型号中电压为110V时，配置电容器容量以实际铭牌为准。

Note:“-A” it means the voltage 110v,the assembly capacitor vaule it is according the labe.

种类 Type

● 电动机 Motor

| 机型 Type | 型号 Model | |
|----------------------------|----------------------|--------------------|
| | 齿轮轴型 Pinion Shaft | 圆轴型 Round Shaft |
| 导线型 Lead Wire Type | 5IK120GU-AF | 5IK120A-AF |
| | 5IK120GU-EF | 5IK120A-EF |
| | 5IK120GU-CF | 5IK120A-CF |
| | 5IK120GU-HF | 5IK120A-HF |
| | 5IK120GU-SF | 5IK120A-SF |
| 带端子箱型 Terminal Box Type | 5IK120GU-AFT | 5IK120A-AFT |
| | 5IK120GU-EFT | 5IK120A-EFT |
| | 5IK120GU-CFT | 5IK120A-CFT |
| | 5IK120GU-HFT | 5IK120A-HFT |
| | 5IK120GU-SFT | 5IK120A-SFT |

● 平行轴减速器 (另售) Parallel Shaft Gearhead (Sold Separately)

| 减速器种类 Gearhead Type | 减速器型号 Gearhead Model | 减速比 Gear Ratio |
|----------------------------------|----------------------------------|---|
| 长寿命●低噪音 Long Life ● Low Noise | 5GU□KB | 3、3.6、5、6、7.5、9、12.5、15、18、25、30、36、50、60、75、90、100、120、150、180、200 |
| | 5GU10XK (中间减速器 Decimal Gearhead) | |

●减速器型号的□中为减速比的数值

Enter the gear ratio in the box (□) within the model name

■ 装有减速器时的容许转矩 Gear Motor-Torque Table

- 减速器另售·中间减速器另售。电动机型号的□中为表示带端子箱型的记号(T)。
Gearhead and mid-gearbox can be sold separately. Enter the code that represents the terminal box type (T) in the box (□) within the model name.
- 减速品型号的□中为减速比的数值。
Enter the gear ratio in the box(□) within the model name.
- □色表示与电动机同一方向运转，其他则为相反方向。
The colored background □ indicates the same rotating direction of the motor while the rotating direction of others are opposite.
- 转速是以电动机的同步转速(50Hz:1500r/min、60Hz:1800r/min)为基准除以减速比而算出来的数值。实际转速将随负载大小变化所示数值减少2%~20%左右。
The speed is calculated by dividing the motor's synchronous speed(50Hz:1500r/min、60Hz:1800r/min) by the gear ratio. The actual speed is 2%~20% less than the displayed value, depending on the size of the load.
- 希望以大于下表的减速比进行进一步减速时，可在电动机与减速机之间安装减速比为10的中间减速机。这时的容许转矩为20N·m。
To reduce the speed beyond the gear ratio in the table, attach a decimal gearhead(gear ratio:10)between the gearhead and motor. In that case, the permissible torque is 20N·m.

■ 容许力矩单位 Allowance Torque Unit : 上段 Upside (N.m) /下段 Belowside (kgf.cm)

| 类型 Type 电动机/减速机 Motor/Gearhead | 减速比 Gear Ratio | | 3 | 3.6 | 5 | 6 | 7.5 | 9 | 12.5 | 15 | 18 | 25 | 30 | 36 | 50 | 60 | 75 | 90 | 100 | 120 | 150 | 180 | 200 | |
|--|-------------------|------|------|------|------|------|------|------|------|------|------|------|------|------|-----|-----|-----|------|-----|------|-----|-----|-----|-----|
| | 转速 Speed r/min | 50Hz | 500 | 417 | 300 | 250 | 200 | 166 | 120 | 100 | 83 | 60 | 50 | 41 | 30 | 25 | 20 | 16 | 15 | 12.5 | 10 | 8.3 | 7.5 | |
| | | 60Hz | 600 | 500 | 360 | 300 | 240 | 200 | 144 | 120 | 100 | 72 | 60 | 50 | 36 | 30 | 24 | 20 | 18 | 15 | 12 | 10 | 9 | |
| 5IK120GU-AF□ 5IK120GU-EF□ 5IK120GU-CF□ 5IK120GU-HF□ 5IK120GU-SF□ | 5GU□KB 5GU□K | 50Hz | 2.3 | 2.7 | 3.8 | 4.5 | 5.6 | 6.8 | 8.5 | 10.2 | 12.2 | 15.3 | 18.4 | 20 | 20 | 20 | 20 | 20 | 20 | 20 | 20 | 20 | 20 | |
| | | | 23.4 | 27.5 | 38.7 | 45.9 | 57.1 | 69.3 | 86.7 | 104 | 124 | 156 | 187 | 200 | 200 | 200 | 200 | 200 | 200 | 200 | 200 | 200 | 200 | |
| | | 60Hz | 1.8 | 2.2 | 3.0 | 3.6 | 4.6 | 5.5 | 6.8 | 8.2 | 9.8 | 12.4 | 14.9 | 17.8 | 20 | 20 | 20 | 18.8 | 20 | 20 | 20 | 20 | 20 | 20 |
| | | | 18.3 | 22.4 | 30.6 | 36.7 | 46.9 | 56.1 | 69.5 | 83.6 | 100 | 126 | 152 | 181 | 200 | 200 | 200 | 192 | 200 | 200 | 200 | 200 | 200 | 200 |

■ 容许悬挂负载·容许轴向负载 To Allow The Hoisting Of The Load Allow Axial Load

电动机(圆轴型)→P272页 Motor(Round Shaft)→P272
减速机→P272页 Gearhead→P272

■ 减速机的容许负载惯性惯量 J Permissible Load Inertia J For Gearhead

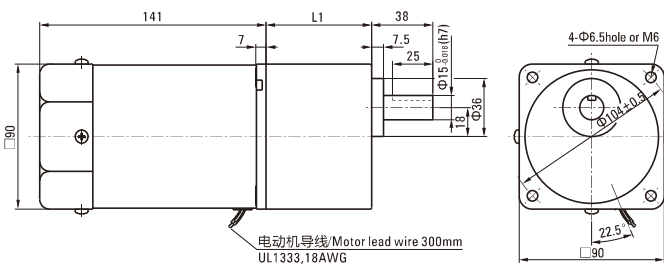
→P272页→P272

■ 外形图(单位 mm) Dimensions(Unit mm)

减速器附有安装用螺丝 Mounting screws are included with gearhead.

● 导线型 Lead Wiring Type ①

重量 Weight : 电动机 Motor : 3.4kg 减速机 Gearhead : 1.5kg



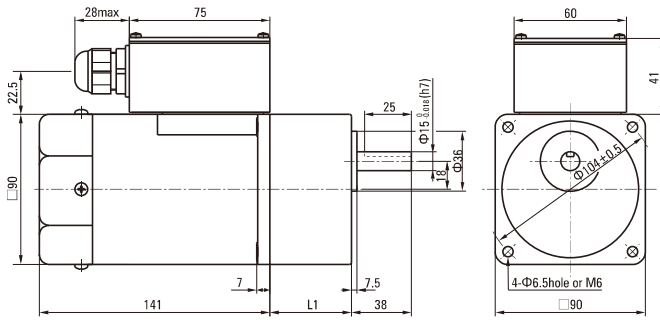
| 电动机型号 Motor Model | 减速器型号 Gearhead Model | 减速比 Gear Ratio | L1 |
|---|-------------------------|-------------------|------|
| 5IK120GU-AF 5IK120GU-EF 5IK120GU-CF 5IK120GU-HF 5IK120GU-SF | 5GU□KB | 3~200 | 65.5 |

- 减速器型号的□中为减速比的数值
Enter the gear ratio in the box (□) within the model name

● 带端子箱型 Terminal Box Type ②

重量 Weight : 电动机 Motor : 3.55kg

减速器 Gearhead : 1.5kg



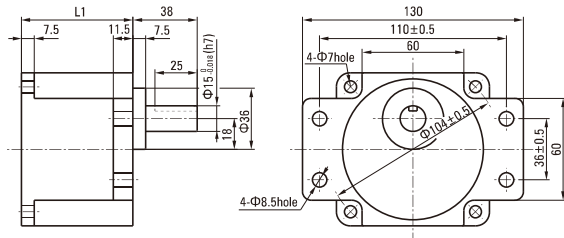
●适用电缆直径为 Use cable with a diameter ofΦ6~Φ12mm

| 电动机型号 Motor Model | 减速器型号 Gearhead Model | 减速比 Gear Ratio | L1 |
|--|-------------------------|-------------------|------|
| 5IK120GU-AFT 5IK120GU-EFT 5IK120GU-CFT 5IK120GU-HFT 5IK120GU-SFT | 5GU□KB | 3~200 | 65.5 |

●减速器型号的□中为减速比的数值
Enter the gear ratio in the box (□) within the model name

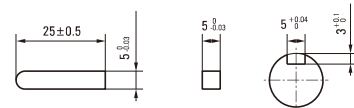
● 凸缘安装型减速器 Flange Mounting Reducer

可安装在GU齿轮轴型上
Can be mounted on GU type gear shaft
5GU□K
重量Weight:1.5kg



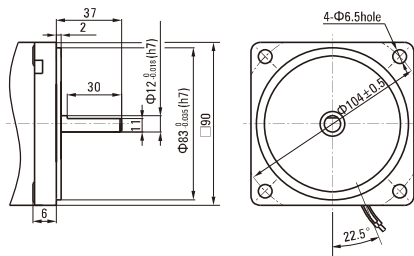
● 键·键槽 (减速器附件)

Key · Keyway(Accessory Of Gearhead)



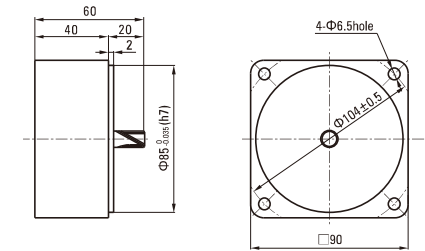
● 圆轴型的转轴部分 Shaft Section Of Round Shaft Type

除重量及轴部外电动机外形与齿轮轴型相同。
Excluding weight and the shaft section motor shape are the same as those of the pinion shaft type.



● 中间减速器 Decimal Gearhead

可安装在GU齿轮轴型上Can be connected to GU pinion shaft type
电动机外形与齿轮轴型相同
5GU10XK
重量 Weight : 0.65kg

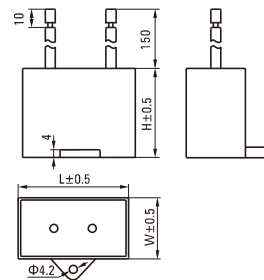


■ 电容器外形尺寸 Formal Dimension Of Capacitor

| 型号Model | | 电容器型号 Capacitor Model | L | W | H |
|----------------------|--------------------|--------------------------|----|----|----|
| 齿轮轴型 Pinion Shaft | 圆轴型 Round Shaft | | | | |
| 5IK120GU-AF□ | 5IK120A-AF□ | ZD300CAUL | 58 | 26 | 38 |
| 5IK120GU-EF□ | 5IK120A-EF□ | ZD250CAUL | 47 | 27 | 37 |
| 5IK120GU-CF□ | 5IK120A-CF□ | ZD70BFAUL | 47 | 24 | 37 |

● 常规电容器出线为引线,也可根据客户要求配置插片式187#
Note: Conventional capacitor is a lead wire type. Inserted 187# is optional

● 电动机型号的□中为表示带端子箱型的记号(T)
Enter the code that represents the terminal box type (T) in the box (□) within the model name



连接图 Wiring Diagram

- 运转方向指从电动机轴看来的方向。CW表示顺时针方向，CCW表示逆时针方向。
The direction of motor rotation is as viewed from the shaft end of motor. CW represents the clockwise direction, while CCW represents the counterclockwise direction.
- 表中所记品名为齿轮轴型，圆轴型亦同。
Name indicated in the list is pinion shaft type, also valid for the equivalent round shaft type.

| 导线型 Lead Wire Type | | |
|--|---|---|
| 5IK120GU-AF、5IK120GU-EF、5IK120GU-HF、5IK120GU-CF | | 5IK120GU-SF |
| <p>顺时针方向CW</p> <p>电容器 Capacitance</p> | <p>逆时针方向CCW</p> <p>电容器 Capacitance</p> | <p>顺时针方向CW</p> <p>电动机 Motor</p> <p>逆时针方向CCW 若对换R、S、T中任意二条，电动机会作逆时针方向运转 To change the rotation direction change any two connections among R, S and T</p> |
| 带端子箱型 Terminal Box Type | | |
| 5IK120GU-AFT、5IK120GU-EFT、5IK120GU-HFT、5IK120GU-CFT | | 5IK120GU-SFT |
| <p>顺时针方向CW</p> <p>电动机 Motor</p> <p>电容器 Capacitance</p> | <p>逆时针方向CCW</p> <p>电动机 Motor</p> <p>电容器 Capacitance</p> | <p>顺时针方向CW</p> <p>电动机 Motor</p> <p>逆时针方向CCW 若对换U、V、W中任意二条，电动机会作逆时针方向运转 To change the rotation direction change any two connections among U, V and W</p> |

请注意 Note:

单相电动机运转方向的转换应在电动机停止后进行。

Change the direction of single-phase motor rotation only after bringing the motor to a stop.

若在电动机运转时转换运转方向，可能发生无法转换运转方向或须费时较久的情况。

If an attempt is made to change the direction of rotation while the motor is rotating, motor may ignore reversing command or change its direction of rotation after some delay.